

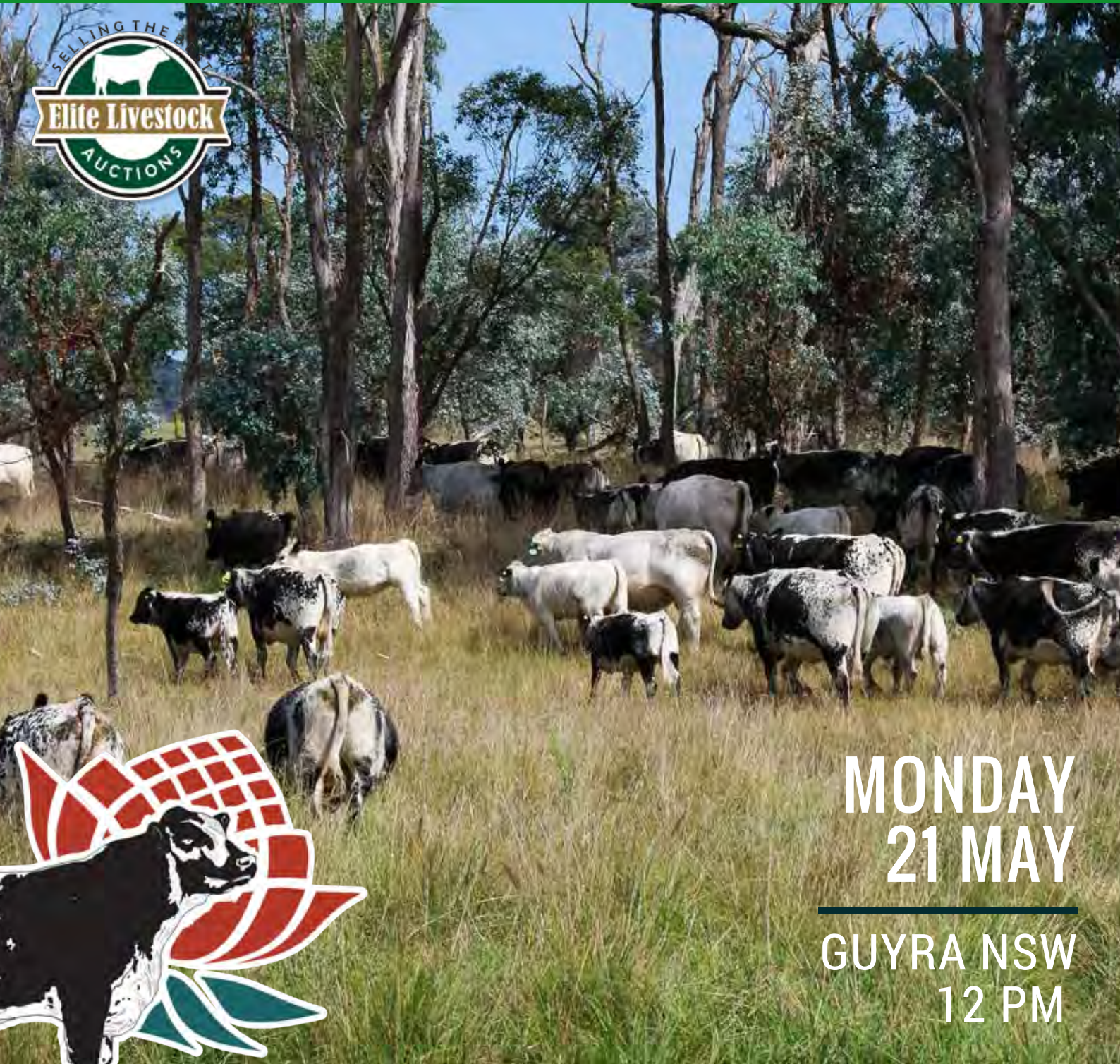
RayWhite

Spot on Genetics

waratahspecklepark.com

FEMALE SALE

TOP OF THE RANGE WARATAH FEMALES



MONDAY
21 MAY

GUYRA NSW
12 PM

Opportunity. Discover. Embrace



We are passionate about our cattle breeding program and are excited to share our passion with you. We are thrilled to be able to offer you a draft of females from our top Waratah female breeders.



WELCOME

Glad to see you

We'd like to welcome you to our first dedicated female sale. We are passionate about our cattle breeding program and are excited to share our passion with you. We are thrilled to be able to offer you a draft of females from our top Waratah female breeders.

'Built on performance and quality...'

Speckle Park cattle have grown exponentially not only in Australia but around the globe. They have proven time and time again they are cattle built on performance and quality, that will unquestionably enhance your bottom line. The market place now looks past their attractive shades of black and white and recognizes their exceptional carcass traits, making them the fastest growing breed in Australia.

continue p. 2

CONTACT US

WARATAH SPECKLE PARK

P.O. Box 115, 2365

GUYRA NSW

admin@waratahspecklepark.com

www.waratahspecklepark.com

STUD PRINCIPLES

LAITON TURNHAM

0420 548 299

ERIC TURNHAM

(02) 6779 1069

SELLING AGENT

RAY WHITE LIVESTOCK

Blake O'Reilly

0448 213 668

(02) 6779 2033

ONLINE BIDDING

ELITE LIVESTOCK

AUCTIONS

1300 15 31 35

FEATURING 113 LOTS

- 45 PTIC Speckle Park Stud females
- 4 Speckle Park Stud heifers
- 6 Hand selected Stud Speckle Park Bulls
- 16 PTIC commercial cows carrying Speckle Park embryo calves
- 14 PTIC Brahckle Females
- 6 Lots of Commercial heifers PTIC to Speckle Park Bulls
- 20 Speckle Park embryos sold in 5 lots
- 16 Brahckle embryos sold in 4 lots
- 1 Flush
- 12 Speckle Park semen packages

PLEASE BRING THIS CATALOGUE TO THE SALE

Waratah is one of the world's largest and proven breeders of Speckle Park cattle. We are very proud of what we have achieved to date. We were among the first to introduce Speckle Park cattle into the Australian cattle market offering clients a wealth of first-hand experience in Speckle Park genetics. We have tried, tested and proven our genetics over the past 10 years. Selecting for fertility and carcass traits without compromising structure. Since our debut, we have produced over 1600 embryos, sold over 180 bulls and 140 females at auction as well as countless paddock sales. Waratah animals and genetics can be found across every state of Australia as well as internationally.

With one of the largest registered Speckle Park female herds in Australia, we're able to offer you the opportunity to secure females from our most successful cow families – Spanish Angel, Unique, Amy, Melisa, Ember and Teeka. These families have bred sale toppers, Show Champions and exceptional feedlot performers. Progeny from our foundation females have made their way around the country and internationally, starting new studs or expanding existing ones.

We are humbled to be the owners and breeders of such cows as Waratah E27 (Amy line) one of our top producing foundation females. With 68 registrations and expecting a further 25 registrations in the next 12 months Waratah E27 is a proven breeder. Her progeny can now be found in Australia and New Zealand, with interest from other countries. Her fertility is second to none which she passes onto her progeny. Her family line is available to you at this year's sale in lots 4, 8, 33, 39, 53 and 92.

Waratah is committed to breeding Speckle Park cattle and have therefore introduced 5 new Canadian family lines into our breeding program – Sage, Loretta, Tequila, Sassafras and Spots A Roaring. Calves are on the ground and we are extremely pleased with their performance so far.

We have hand selected this year's sale offering focussing on maternal strength, good temperament and ability to breed predictability into their progeny. These females have been bred to new exciting sires such as CN ZPoz Zazu, Ponderosa Chuck, Minamurra Lancelot and Waratah Magic M28. Be sure to inspect our young cows in this year's offering as there are potential 'Show Prospects' on offer. One of the most exciting offerings in this year's sale is PTIC females carrying the very latest embryos. This is a not to be missed opportunity to secure some of Speckle Park's latest genetics. We are also offering six hand selected feature bulls that we believe will compliment our females in this sale. All six bulls are stud sire quality.

To expand our Brahckle breeding program, Waratah bought 13 stud Brahman cows from the Jaffra Brahman dispersal sale in 2017. This has given us the opportunity to sell you a number of our foundation Brahckle females in order to make way for the Brahckle calves we are expecting in Spring 2018.

Our upcoming sale highlights a decade of commitment and breeding of Speckle Park cattle. We are offering you the opportunity to purchase some of the very best we have to offer. This sale offers you the ability to purchase full embryo sisters to many of the cows we have retained on farm as breeders along with some of our most successful donor cows.

This sale will serve as an extension of our annual Speckle Park sale in July. It is our hope that you will be able to find animals that will compliment and enhance your own breeding programs. We hope that you have as much success as we have with our top female breeders.

We look forward to you joining us as we come together for this momentous opportunity.

Yours sincerely,

Eric, Helen, Laiton & Kayla Turnham



Video Sale

This sale will be conducted using video only. No animals will go through a sale ring. Please ensure you arrive early sale morning to view the animals in their display pens. Videos will be available online a week before sale day, at www.elitelivestockauctions.com.au or www.waratahspecklepark.com

Inspections

Cattle will be on display from 9.30 am on sale day. We welcome your inspection of the cattle prior to sale day by appointment only.

Refreshments

A BBQ and light refreshments will be provided on the day by the Guyra Catholic Parish. They are fundraising to upgrade bathroom and driveway facilities at their local churches.

Travel Arrangements

The sale will be conducted at 'Waratah' Guyra, which is situated 38 km north of Armidale and 60km south of Glen Innes.

By air, Armidale is accessible via Sydney and Brisbane. The flight is approximately 1 hour. 'Waratah' is 40 minutes' drive from the Armidale (NSW) Airport. Car hire is available from the Airport.

By road Guyra is centrally located approximately 6 hours between Sydney and Brisbane on the New England Highway.

Accommodation

Motels are available in Guyra, Armidale and Glen Innes.

Outside Agent Rebate

A rebate of 1% is available to outside agents introducing buyers one business day (Friday, 18th of May by 5pm), prior to the sale in writing to Ray White Rural Guyra – fax: (02) 6779 2034 or email: rural.armidale.nsw@raywhite.com and settle on the client's behalf within 7 days after the sale. A 2% rebate is available to outside agents who supply a letter of introduction as above and attend the sale with clients. Again, agents are required to settle on the client's behalf within 7 days after the sale.

Elite Livestock Auctions

If unable to attend the sale on the day, clients are able to live bid online at www.elitelivestockauctions.com.au.

Please refer to the 'How to Register with Elite Livestock Auctions' page in this sale catalogue. It is highly recommended to register with Elite Livestock prior to sale day if using this facility. Please direct any questions or concerns to Elite Livestock Auctions by calling 1300 15 31 35.

Herd Health Status

Animals in the sale have met all necessary health requirements. Cattle are bred on a J-Bas score 7 property and have been inspected by Guyra District veterinarian Dr. Lisa Brown. For individual breeding certificates please contact Lisa on (02) 6779 1173. Waratah Speckle Park is LPA and MSA accredited.

Sale Day Safety

Your safety on sale day is important to us. Our cattle are quite and well-tempered however, animal behaviour can be unpredictable at times. Animals can react differently when exposed to large crowds of people and noise. If you wish to enter inspection yards please be mindful of the animals. Please do not enter sale pens with small children or if you have limited mobility.

Supplementary sheet

Updated pregnancy diagnosis will be provided on sale day along with any other new or additional information.

Transport

All cattle that are to be transported from 'Waratah' need to be picked up no later than 1st June 2018 except for overseas buyers. Arrangements for overseas buyers need to be made with the vendor prior to sale day. Prompt pick up is appreciated as we need to make way for our sale bulls at Waratah. No pickups available on Saturdays.

For transport arrangements please ring Peter Kratz 0412 667 320 or Blake O'Reilly on 0448 213 668.

Mobile Coverage

There is good mobile phone coverage at 'Waratah'. Please make arrangements with agents for phone bidding.

Delivery of Embryos

Embryos can be privately picked up or transported through Wyatt Artificial Breeders (02) 6629 3177 or 0418 628 157. Export embryos are stored at Global Reproduction Solutions in Victoria. Please contact Dominic and Joanne Bayard on (03) 5764 1224 or 0427 732 538.



Semen Rights

Waratah Speckle Park retain semen rights in a number of bulls each year. This will be outlined under the Lot number or on the supplementary sheet.

Breeding Guarantees

Bulls

All bulls are guaranteed breeders and have passed a semen test and structural assessment prior to the sale. For breeding certificates please contact Guyra District vet Dr. Lisa Brown on (02) 6779 1173

In the unlikely event of infertility, the vendor guarantees that (without expenses, interest, costs and damages) if the bull proves to be totally infertile or totally incapable of natural service, provided it is not caused by injury, disease, mismanagement or negligence since leaving the sale, to either replace with an animal of comparable value upon return of the affected bull or credit (purchase price, less the salvage value) will be given at the next sale or on a private sale animal.

Bulls that are run in a multiple joined environment are not guaranteed by Waratah for breakdown or injury. Yearling bulls (under 18 months) are not guaranteed if joined with more than 30 cows in their first year.

If the bull does not possess a reasonable fertility, although not totally infertile, any claim shall be considered on its merits by the vendor and his veterinarian. Any complaint must be lodged with a relevant veterinary certificate within 6 months of the sale direct to the vendor.

Females

All females are sold as guaranteed breeders. In the unlikely event that a female cannot be successfully bred by natural service within 6 months of the sale date or by the time the female reaches 22 months, provided that the purchased female has not been injured, contracted disease, been mismanaged or neglected since leaving the sale, upon return of the affected female, the vendors' guarantees (without expenses, interest, costs and damages) the purchase be refunded or a replacement female will be given. This guarantee does not apply to a female that is entered into an embryo transfer programme. Any complaint must be lodged to the vendor with a relevant veterinary certificate.

Insurance

We encourage buyers to insure their purchased lot or lots at the time of sale. All care will be taken from the fall of the hammer but it is the purchaser's responsibility for any injury or death occurred thereafter. We recommend buyers to organise injury insurance with their Agent or David Difranti (m: 0412 328 911) from WFI Insurance will be available on the day.

Advise Disclaimer

At Waratah Speckle Park we are willing to provide assistance to those seeking guidance and our opinion on cattle. However, the final decision is that of the purchaser. Waratah Speckle Park will not be responsible for the final results and performance of purchases outside our warranty.

Sale Catalogue Disclaimer

The vendors have taken care to provide information that is correct to the best of their knowledge at the time of publication. However, neither the vendors nor the selling agent make no other representations about the accuracy, reliability or completeness of any information provided in this catalogue and do not assume any responsibility for the use or interpretation of the information included in this catalogue. It is advised that you seek independent verification of any information contained in this catalogue before relying on such information. Announcements made on sale day supersede information in this catalogue.



The Waratah Way

The purchase of a Waratah bull is a long-term investment, so they should be treated with care and in a gentle manner. Always handle them quietly and at a walking pace. By doing so, you will earn their respect and maintain their good temperament. Our bulls are vaccinated and drenched prior to sale and can serve approximately forty cows as two year olds and slightly more as older bulls. They are handled with dogs and contained using electric fencing, so they will treat both with respect. A Waratah Bull provides excellent opportunities in genetics and can improve the value of your herd into the future.

Transportation & Handling

At the fall of the hammer at auction you take possession of your purchase, so from that moment, it is important to treat your new investment with care. You might like to consider insurance for transportation back to your property and for the first few months of ownership.

A bull leaving Waratah should be unloaded at your yards, with house cows, steers or herd cows as companions. Always separate bulls from different origins into different yards. Remember your bull is leaving the security of a mob and will arrive in unfamiliar territory at your property.

Vaccinations/Treatment

Always consult with your veterinarian and establish a health treatment plan to be given on arrival at your property. It is important to vaccinate against vibriosis, as it is a common cause of infertility and is transmitted by infected bulls. Fortunately, this disease is easily prevented by vaccination prior to joining each year. A drench is important when he is finished serving the cows. You may also treat bulls yearly with other injections that are appropriate for your local area/state.

Behaviour & Temperament

The temperament of any bull is best demonstrated by their behaviour in the yard before auctioning begins. During and after action and/or on arrival at your property their behaviour may change due to changes in environment and increased stress. Bulls may display a change in temperament, becoming excited and/or agitated. A number of stimuli may cause this change including unusual and loud noises, new people, crowds, a new environment, new feed, loss of mates, a new herd and different handling methods. This can be very upsetting to animals. It is best to allow bulls' time to adjust to their new environment. You can assist this by providing adequate feed, water, low noise levels and a mate i.e. house cow. Once settled into their

new environment bulls' temperament will return to normal.

Young Bulls (12-18 months)

It is possible for a young bull to settle in with older bulls, however the paddock needs to be large enough for the young one to keep away from the others and to find adequate feed. As the new bull, he will get the last of the feed available because of the pecking order. Young bulls are still growing and need enough feed to maintain their growth pattern, which may require supplement feed in the first breeding season. Having enough paddock area also helps them to be able to settle the cows quickly and efficiently. We recommend mating loads of only 25-30 females. Never overwork young bulls. As they are not fully developed they will be leaner and carry less body fat reserves. If their condition score declines to below 3, sperm production may be compromised. Their condition is essential for good fertility. It is also important to note that the joining season may need restricting to 6-8 weeks if conditions are extensive and where good quality feed is unavailable.

Mating

Cows should be seen cycling in groups with male calves hanging around before mating. If using several young bulls, they should be run together for a few weeks prior to joining. This should reduce problems later on as they will have already established a hierarchy. Also, young bulls that have been recently purchased should not be joined together with older bulls.

Always observe your bull when he is working as accidents can happen. Bulls can scratch their penis on dry manure on the cows backside which can lead to infection with large sores forming. If treated quickly this can be remedied. If a bull is not serving he needs to be replaced, but remember, if the cow has been served before the observer has arrived, the bull may not repeat the performance. Remember any day he is not working can cost you money.

Nutrition

When your new bull arrives at your property, provide adequate hay and water and leave him alone until the next day so he has a chance to settle. Before you join your bull with a herd, the cows should be on a rising plane of nutrition to ensure they have the greatest possible chance of cycling. When the season is finished, the bull should be put away with quality, adequate feed, as this will help prevent fighting.

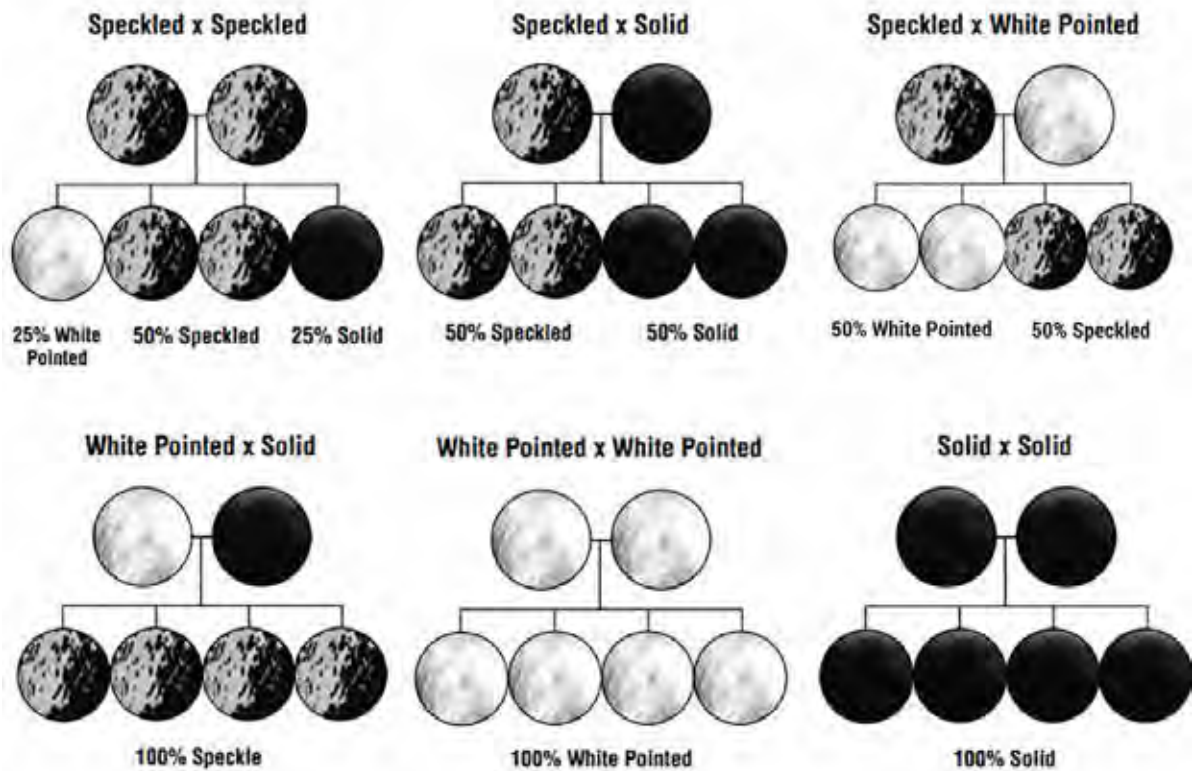
Please remember: Always respect your bull and he will respect you.



It is important to understand how Speckle Park colour patterns work in order to achieve your breeding goals. While some breeders are mostly interested in producing speckled cattle others want to inject Speckle Parks' notorious hybrid vigour while retaining predominantly black herds. For example, when a solid black Speckle Park bull is joined with 100% purebred Angus cows the resulting calves will be predominately solid black. Another example is when Angus cows are joined to a white Speckle Park bull the resulting calves will be predominately speckled.

Speckle Park cattle have four distinct colour patterns; speckled, leopard, white pointed and solid black. The speckle and leopard colour pattern are genetically the same except for varying degrees of spotting. Some Speckle Park cattle can produce red colour patterns if both parents carry the recessive red gene.

Please remember when dealing with nature individual results will vary. This is to be used as a guide only.



ARTIFICIAL BREEDERS

DWIGHT & NOELA WYATT

(02) 6629 3177 - 0418 628 157

e: wyattab@bigpond.net.au

GOOLMANGAR NSW 2480

FOR ALL YOUR ARTIFICIAL INSEMINATION NEEDS

SEMEN, LIQUID NITROGEN & AI HARDWARE

We can assist you with embryo & semen transport logistics.





ELITE LIVESTOCK AUCTIONS

**UNABLE TO MAKE
SALE DAY?**

**BID ONLINE AT HOME
VIA LIVE INTERNET
BORADCAST**

Waratah is excited to partner with Elite Livestock Auctions to enable clients to live bid at home in real-time. Buyers can view the auction and bid using a computer, iPad, iPhone or Android device. To register and bid follow the step by step guide provided.



INTERNATIONAL BUYERS can register with Elite Livestock Auctions. Please call or email to register.



HOW TO REGISTER with ELITE LIVESTOCK AUCTIONS

Welcome to the new age of selling livestock in Australia and "Happy Bidding"



- 1  Simply go to www.elitelivestockauctions.com.au using your desktop, laptop, iPad, iPhone or android device
- 2  Click on the "Sign Up" page / link
- 3  Create a bidding profile using the bidder registration page.
(You can either register as a livestock agent, company or private buyer.)
- 4  Agree to the Elite livestock Auctions Terms & Conditions and the Selling Agents Sale Terms & Conditions as printed in the official Sale Catalogue
- 5  Click "Register"
- 6  You will then be notified by email that an account has been created

- 7  Once an account has been created you are all "Set to Bid"
- 8  Each auction can then be viewed by clicking "Live Auction" logo on the Elite Livestock Auctions website
- 9  Once you receive email notification that your account has been created please go to the sale you wish to bid at and click "Request to Bid"
- 10  The sale agents will then approve your application to bid and on the sale catalogue you will see "✓ Bid Request Approved"
- 11  On Sale day simply login, click "Enter Auction" on the catalogue page and you can start bidding.
(There is no need for software download)
- 12  At the completion of the auction, invoicing will be carried out as per your registration details by the Selling Agents.

Having trouble registering and logging in?
Contact Elite Livestock Auctions
1300 15 31 35

Elite Livestock Auctions ABN 19 604 627 607
 340 Curtin Avenue West, Eagle Farm QLD 4009

1300 15 31 35 07 3041 5053
www.elitelivestockauctions.com.au



WARATAH MAGIC M28

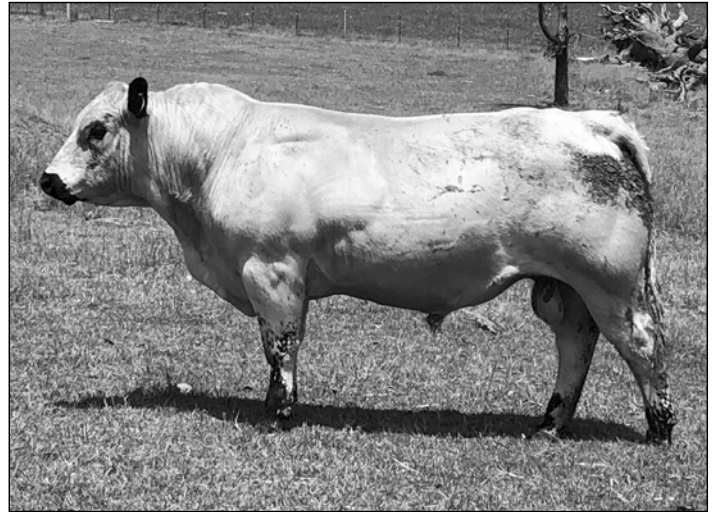
Born: 23/07/2016

LST M28

Colour: White

PAR PAPA RAZZI 6P
SIRE: PAR THROTTLE 66T
ROB 'N SON'S FARMS 6P
HWY. 4 SHOW STOPPER 2S
DAM: RAINA OF PAR 54U
RAINA OF PAR 54R

Notes: Magic is an impressive bull who is thick with a good top line. He exhibits good muscle tone and was the stand out bull among his embryo brothers. Magic is also white which is an added bonus giving his offspring more colour.



MINNAMURRA LANCELOT L14

Born: 26/05/2015

MPC L14

Colour: White

STAR BANK KING GEORGE 82U
SIRE: SIX STAR ROYAL FLESH 101Y
STAR BANK 53R
CODIAK CRIKEY 13U
DAM: SIX STAR PENELOPE G29
LAKEVIEW PENELOPE 5P

Notes: Minnamurra Lancelot L14 was chosen as the back up bull to our AI breeding program as his pedigree was an outcross to the majority of our cow herd. He also stood out for his early maturity and length of body. Semen has been sold to New Zealand.



Livestock



Your Local Livestock Marketing and
Sales Specialists

- Comprehensive and professional livestock marketing and selling team
- Locally owned and operated
- Part of the extensive Ray White corporate network allowing our sales of livestock to gain competition from purchasers at a nation level
- Fully licensed, accredited Auctions Plus assessors and licensed auctioneer

Sam Sewell 0447 255 100 or 6772 1125
Blake O'Reilly 0448 213 668 or 6779 2033
rwrugyraarmidale.com

Ray White Livestock Guyra/Armidale





A&W 15R WAG 15R

Born: 11/04/2005

Colour: White

THUNDER 168D
SIRE: **BELMORAL'S SPECIAL 99H**
LIGHTNING LADY 2Y
ASPEN ACRES T.N.T 4Y
DAM: **TRIPLE A GEM 15G**
SPOTS 'N' SPROUTS 15Y

Notes: Out of Belmoral's Special 99H, A&W is one of the first original Speckle Park sires to be imported into Australia.

ASPEN ACRES T.N.T. 4Y

Born: 3/04/1989

EWS 4Y

Colour: Speckle

NORTON
SIRE: **SPOTS 'N' SPROUTS DYNAMITE 23T**
TAG# 92
PUSSY CAT 11
DAM: **ASPEN ACRES T.N.T. 4Y**
COW # 69

Notes: T.N.T is an older bull within the Speckle Park breed. He is known to produce outstanding females.

CHAMPAGNE PRETENDER

Born: 11/11/2008

CSP D1

Colour: Speckle

PAR KING PIN 1K
SIRE: **PAR MOO FASSA 03M**
ASPEN ACRES 3A
STAR BANK LACERTA 68L
DAM: **NOTTA PRETENDER 64P**
STAR BANK 64L

Notes: Pretender is impressive on the eye with natural thickness.

CN ZPOTZ ZAZU 2Z

Born: 20/02/2012

CNZ 2Z

Colour: White

LEGACY ROUGHRIDER 52R
SIRE: **LEGACY TURNPIKE CRUISER 27T**
LEGACY ROMA 60R
PRAIRIE HILL MASTERPLAN II 87L
DAM: **PRAIRIE HILL NIRVANA 4N**
PRAIRIE HILL 1H

Notes: Zazu is a very structurally correct bull who first attracted our attention in the Canadian Source Speckle Park Sale in 2013. Laiton viewed Zazu as a mature bull while in Canada in 2016 and he did not disappoint. Zazu is a free moving thick soft bull. We are impressed with the extra length he has put into his offspring and we will be using this bull again in the future.

CODIAK AMIGO 65Y

Born: 14/07/2011

GNK 65Y

Colour: White

LEGACY SCOUT 10S
SIRE: **LEGACY UNRIVALED 12U**
STAR BANK 34R
HWY. 4 SPECKLE PARK 20L
DAM: **CODIAK GNK 24T**
LEIGH-AL-ANN-LILLY 2D

Notes: Codiak Amigo is an eye appealing sire that offers length and growth. His quiet nature is an added bonus. His first calves at the Scone SPI sale averaged \$10 300. BW 33.5kg .

CODIAK PUTNUM 61Y

Born: 2/06/2011

GNK 61Y

Colour: White

CODIAK PHLEP GNK 3P
SIRE: **CODIAK OSCAR GNK 8S**
CODIAK MATEUSA RKW 63M
FLATLAKE BUZZ 60K
DAM: **NORTHERN LIGHTS 14N**
CODIAK KLIPSO RKW 31K

Notes: Putnum is a long, thick, white Speckle Park sire who won Senior Speckle Park Champion and Reserve Speckle Park Grand Champion at Farm Fair International 2013.

CODIAK SPENCER 52B

Born: 30/05/2014

GNK 52B

Colour: White

CODIAK PHILEP 3P
SIRE: **CODIAK OSCAR GNK 8S**
CODIAK MATEUSA RKW 63M
RAVEN MEDOWS MAGNUM 10N
DAM: **CODIAK WILLA 13W**
CODIAK MISS CARLA 21M

Notes: Codiak Spencer was the standout bull to me at the 2016 Summit 3 sale in Canada. He has extra length of body just like his father Oscar.

HEARTRIDGE ARIES 01W

Born: 17/05/2009

KAM 01W

Colour: Speckle

PAR KING PIN 1K
SIRE: **PAR SHARP SHOOTER 60S**
LUCKY ANGEL OF PAR 6L
PAR NAPOLEON 10N
DAM: **PONDEROSA TIFFANY 06T**
ASPEN ACRES LUCKY LADY 05L

Notes: Aries was selected for his length and depth of hind quarter. He is a proven breeder to improve carcass quality. The Champion steer of the Calgary Stampede Beef Carcass Competition in 2011 exhibited bloodlines from Aries' sire and dam.



JSF CONTINENTAL 9C

Born: 3/03/2015

JSF 9C

Colour: Speckle

CODIAK TRUMP 20T
SIRE: **CODIAK CALVIN 58Y**
CODIAK SILVER FOX 64L
RIVER HILL SHOW BIZ 93S
DAM: **MONNERY RIVER 7X**
MONNERY RIVER 7T

Notes: The newest young Canadian sire we are currently using at Waratah. He was the heavist of the JSF bulls in the 2015 drop. I viewed him as a yearling in 2016, He has a bit more size than the traditional Speckle Park.

NOTTA ROMEO 64R

Born: 13/02/2005

JMG 64R

Colour: Speckle

SPOTS 'N' SPROUTS JUNO 103J
SIRE: **STAR BANK LACERTA 68L**
STAR BANK 55H
NORALTA 9E
DAM: **STAR BANK 64L**
JANETTE OF PAR 44H

Notes: A big, powerful bull that has the largest frame of any Speckle Parks bulls I have seen to date.

PAR ACE IN A HOLE 66A

Born: 24/01/2013

PAR 66A

Colour: Speckle

CALAMASUE 10R
SIRE: **P.A.R. TOUCH DOWN 600T**
PRETTY LADY OF P.A.R. 600P
P.A.R. PAPA RAZZI 6P
DAM: **P.A.R. WONDER BRA 66W**
ROB 'N SON'S FARMS 6P

Notes: Ace In A Hole won Reserve Champion Bull Calf at Canadian Western Agribition. He also won King of the Ring Champion at the 2013 Lloydminster Stockade Roundup. I also had the opportunity to view Ace In A Hole in 2016 as a mature bull. He is a good heifer bull and offers new outcross genetics in Australia.

RIVER HILL SAMSON 25S

Born: 27/01/2006

COD 25S

Colour: Speckle

PRAIRIE HILL MOST WANTED 15K
SIRE: **RIVER HILL PATHFINDER 22P**
PRAIRIE HILL SPLASHOCOLOR 122E
PAR MOO FASSA 03M
DAM: **RIVER HILL PRIDE 'N' JOY 25P**
RIVER HILL JADE 59M

Notes: Samson is an eye-appealing sire with a moderate frame and added extra thickness to his progeny.

JSF TRADE SECRET 11A

Born: 9/03/2013

JSF 11A

Colour: White

REDNECK WILD WILLY 2W
SIRE: **YOGI GOES REDNECK 7Y**
ASPEN ACRES LINDA LOU 10L
RIVER HILL SHOW BIZ 93S
DAM: **MONNERY RIVER 7W**
MONNERY RIVER 7P

Notes: Trade Secret is a bull who has proven himself here at Waratah producing a number of standout progeny. To see how well he breeds take a look at his son lot 54 or his daughters lots 27 to 30. He is an easy doing sire with good muscle tone. As a white bull he will colour mark the majority of his offspring.

P.A.R PAPA RAZZI 6P

Born: 26/02/2004

PAR 6P

Colour: Speckle

PAR KING PIN 1K
SIRE: **PAR MR. POWERSTROKE 4M**
ASPEN ACRES KAABA KIN 4K
PAR KISMIT 10K
DAM: **MONALISA OF PAR 6M**
DOUBLE RR ANGEL 86'88

Notes: Papa Razzi is a balanced bull offering good structure, thickness and carcass quality. He was named Grand Champion bull at Canadian Western Agribition in 2005 and in 2004 was Grand Champion Bull at Farmfair.

PONDEROSA CHUCK 24C

Born: 10/04/2015

KTM 24C

Colour: Speckle

LEGACY UPPERCUT 74U
SIRE: **LEGACY LEFT JAB 35X**
DEB-RAY 12K
HWY 4 SHOW STOPPER 2S
DAM: **U LITTLE REDNECK MX 12U**
RIVER HILL SADYE 12S

Notes: A bull with an outcross pedigree. I picked him out of the paddock as a yearling. I believe he was the standout bull from the Ponderosa breeding program. His dam was also impressive, when I saw her in Canada.

SPOTS 'N' SPROUTS STANDS ALONE 300XJKH 300X

Born: 11/03/2010

Colour: white

HWY. 4 SPECKLE PARK 20K
SIRE: **STYALS LIGHTNING LADD 14P**
LIGHTNING LADY 10C
STAR BANK LACERTA 68L
DAM: **SPOTS 'N' SPROUTS 2R**
SPOTS 'N' SPROUTS 21L

Notes: A white Styals Lightning Ladd son who had a low birth weight of 35kg. When I saw him in Canada he was a free moving, quiet bull with lots of muscle. We are extremely happy with his female progeny, they are great mothers and milk well.



STAR BANK KING GEORGE

Born: 2/04/2008

GGG 82U

Colour: Speckle

PRAIRIE HILL ENTICER 89G

SIRE: SPOTS 'N' SPROUTS NEFROM 101N

SPOTS 'N' SPROUTS 6A

NORALTA 9E

DAM: STAR BANK 11H

LIGHTNING LADY 19C

Notes: King George was the Grand Champion Speckle Park Bull at Agribition 2008.

STAR BANK LACERTA 68L

Born: 17/04/2001

GGG 68L

Colour: Speckle

PAR GREAT WESTERN 11F

SIRE: SPOTS 'N' SPROUTS JUNO 103J

SPOTS 'N' SPROUTS 6A

NORALTA 9E

DAM: STAR BANK 55H

STAR BANK 43F

Notes: The breed's most proven Speckle Park sire. Lacerta won Grand Champion at Farmfair, Canada 2003.

WARATAH ECHO E33

Born: 17/09/2009

LST E33

Colour: Speckle

SPOTS 'N' SPROUTS JUNO 103J

SIRE: STAR BANK LACERTA 68L

STAR BANK 55H

PRAIRIE HILL MASTERPLAN 97G

DAM: PRAIRIE HILL AMY'S GIRL 21K

MISS PRAIRIE HILL 5F

Notes: Waratah Echo E33 is a long bodied speckled bull, out of the famous Star Bank Lacerta. His solid disposition and muscle tone made him an outstanding bull for 2011. At nine years of age, he is still an active stud sire at Pinnacle Speckle Park QLD.

WARATAH EDDIE E22

Born: 16/09/2009

LST E22

Colour: White

PRAIRIE HILL DURMAX 93N

SIRE: PRAIRIE HILL JOHN WAYNE 50S

PRAIRIE HILL NABOB 50N

STAR BANK LACERTA 68L

DAM: NOTTA PHO-FINISH 54P

STAR BANK LEONID NIGHT 54L

Notes: An attractive sire with extra frame, Eddie stands taller than other Speckle Park bulls.

WARATAH ELLIS E28

Born: 19/09/2009

LST E28

Colour: White

SPOTS 'N' SPROUTS JUNO 103J

SIRE: STAR BANK LACERTA 68L

STAR BANK 55H

PRAIRIE HILL MASTERPLAN 97G

DAM: PRAIRIE HILL AMY'S GIRL 21K

MISS PRAIRIE HILL 5F

Notes: Our first show champion, winning Reserve Senior Champion at Beef Australia 2012. Ellis was the best bull from the 2009 drop.

WARATAH FLASH F7

Born: 14/09/2010

LST F7

Colour: White

A & W JOEY 55P

SIRE: RIVER HILL TRAFFIC JAM 26T

CALAMASUE 26R

SPOTS 'N' SPROUTS JUNO 103J

DAM: STAR BANK 99M

STAR BANK 11H

Notes: Flash is considered the best Waratah bull in the 2010 drop. He adds additional length to his progeny. He was the sire of the top selling bull in the 2014 Waratah sale.

WARATAH HUME H14

Born: 28/06/2012

LST H14

Colour: Speckle

BELMORAL'S SPECIAL 99H

SIRE: A & W 15R

TRIPLE A GEM 15G

STAR BANK LACERTA 68L

DAM: 68L PRARIE HILL AMY'S GIRL F8

PRAIRIE HILL AMY'S GIRL 21K

Notes: Waratah Hume was the Royal Brisbane Champion in 2013. Hume is a bull with real sire character. He is thick and powerful with a big hindquarter. Hume's full sister was the Grand Champion at Beef Australia in 2015 and Hume was Reserve Senior Champion. He was also the sire of the top selling bull in our 2016 sale.

WARATAH J30

Born: 26/06/2013

LST J30

Colour: White

PAR MOO FASSA 03M

SIRE: CHAMPAGNE PRETENDER D1

NOTTO PRETENDER 64P

RIVER HILL SAMSON 25S

DAM: WARATAH EMBER E26

STAR BANK 54R

Notes: Waratah J30 offers great volume and thickness. He was a stand out amongst the 2013 yearling bulls. He was the highest selling yearling bull in the 2014 sale. We are very pleased with the bulls he has sired. We are using him in our embryo breeding program.



WARATAH KEEPER K067

Born: 16/08/2014

LST K67

Colour: White

PAR SHARP SHOOTERS 60S
SIRE: HEARTRIDGE ARIES 01W
PONDEROSA TIFFANY 06T
CODIAK TRUMP GNK 20T
DAM: CODIAK KELLE GNK 2X
CODIAK HILLARY 81H

Notes: Waratah Keeper was a full imported Canadian embryo which makes him a total outcross to most genetics in Australia.

WARATAH KINCROME K027

Born: 31/07/2014

LST K27

Colour: White

PAR SHARP SHOOTERS 60S
SIRE: HEARTRIDGE ARIES 01W
PONDEROSA TIFFANY 06T
HWY. 4 SPECKLE PARK 2H
DAM: WARATAH E27
PRAIRIE HILL AMY'S GIRL 21K

Notes: Waratah Kincrome offers extra length and was used as our back up sire in 2015.

WARATAH KOOLIE K133

Born: 11/09/2014

LST K133

Colour: Speckle

CODIAK OSCAR GNK 8S
SIRE: CODIAK PUTNUM 61Y
NORTHERN LIGHTS 14N
STAR BANK LACERTA 68L
DAM: PRAIRIE HILL AMY'S GIRL F8
PRAIRIE HILL AMY'S GIRL 21K

Notes: A soft Codiak Putnum son who is extra thick and an early maturing bull. He should add thickness and softness to his offspring.

WARATAH MACK M14

Born: 16/07/2016

LST M14

Colour: Speckle

PAR PAPA RAZZI 6P
SIRE: PAR THROTTLE 66T
ROB 'N SON'S FARMS 6P
HWY. 4 SHOW STOPPER 2S
DAM: RAINA OF PAR 54U
RAINA OF PAR 54R

Notes: Mack was chosen as the back up sire on our heifers as he expresses lean shoulders and offers extra neck extension.

WARATAH SPECKLED GOLD G25

Born: 30/08/2011

LST G25

Colour: Speckle

SPOTS 'N SPROUTS JUNO 103J
SIRE: STAR BANK LACERTA 68L
STAR BANK 55H
CODIAK MR. BLACK RKW 13M
DAM: CODIAK UNIQUE GNK 8R
CODIAK RKW 07J

Notes: Waratah Speckled Gold is a great heifer bull. His calves are small but they grow fast. He is a very sound bull with great feet, added thickness and muscling.

WARATAH WILLIS G12

Born: 26/08/2011

LST G12

Colour: White

RIVER HILL TRAFFIC JAM 26T
SIRE: RIVER HILL WALKER 60W
RIVER HILL SHOW ME OFF 60S
HWY. 4 SPECKLE PARK 2H
DAM: CODIAK NICK LADY 25N
CODIAK PRAIRIE FIRE 01J

Notes: Waratah Willis is a large framed white speckled bull who moves freely and covers the ground well. He was sold to Linaubin Speckle Park NSW in 2013.

YOGI GOES RED NECK 7Y

Born: 19/02/2011

SDS 7Y

Colour: Speckle

PAR MOO FASSA 03M
SIRE: RED NECK WILD WILLY 2W
PRAIRIE HILL NAUGHTY GIRL 90N
ASPEN ACRES HORATIO 6H
DAM: ASPEN ACERS LINDA LOU 10L
JOY OF PAR 10J

Notes: Yogi Goes Redneck is an opportunity not to be missed! I had the opportunity to see Yogi Goes Redneck when I was in Canada and I was impressed by his calves. We have already used one of his son's, Trade Secert in our embryo program.



Spot on Genetics
FEMALE SALE

*45 Speckle Park
 Stud Females PTIC*

LOT 1 WARATAH UNIQUE G23 LST G23
 Born: 30/08/2011 Colour: Speckled

SPOTS 'N SPROUTS JUNO 103J
SIRE: STAR BANK LACERTA 68L
 STAR BANK 55H
 CODIAK MR. BLACK RKW 13M (Black)
DAM: CODIAK UNIQUE GNK 8R
 CODIAK RKW 07J

Notes: Waratah Unique G23 is the daughter of the GREAT Codiak Unique 8R cow who is a standout female in the breed in Canada. G23 has been the foundation female for our Unique cow family line at Waratah. She is sister to Waratah Speckled Gold who has been used in our stud heifer program in previous years.

Waratah Unique G23 produced 26 embryos for us over the years to average 5.2 per flush. Her 2016 bull calf finds himself in our show team for Beef Australia 2018. Her daughter is Lot 22. AI to CN Zpotz Zazu on the 10/11/17 backed up with Minnamurra Lancelot L14 and Waratah M28. PTIC due aprox 19/8/18.

Purchaser: \$.....



LOT 2 WARATAH MELISA G17 LST G17
 Born: 28/08/2011 Colour: Speckled

RAVEN MEADOWS MAGNUM 10N
SIRE: CODIAK CRIKEY GNK 13U
 CODIAK RKW 07J
 STYALS 3K
DAM: CODIAK MELISA RKW 64M
 WILDWOOD KIT 6K (ET)

Notes: Waratah Melisa G17 is one of three sisters from our third group of Canadian embryos. Her sister Waratah Melisa G34 sold as a heifer to Mt Eccles Speckle Park VIC, as a foundation female. Waratah G34 is the mother of Fish Creek Farms Thunderstruck, a bull with an outstanding show record as a yearling winning among other things Junior Interbreed Grand Champion bull at the Melbourne show against 55 other bulls.

Waratah Melisa G17 is the foundation cow for our Melisa cow family. One of her daughters K62 sold to Barkly Speckle Parks QLD for \$12 000. Over the years she has an impressive flush record averaging over 11 embryos per flush, producing 100 embryos to date. We have implanted some of these embryos and are expecting more G17 calves soon. Her embryos have sold to many states in Australia as well as internationally. Over the past 12 months her progeny and embryos sales are over \$80 000. I think this would be the most proven cow for sale in the country this year. Her Genetic testing guarantees her as being Black, polled and free of Myostatin. If you are after a cow with a proven history Waratah G17 would be hard to beat.

Purchaser: \$.....



Waratah reserves the right to two future flushes at the buyers convenience.



Spot on Genetics FEMALE SALE

45 Speckle Park
Stud Females PTIC

LOT 3 WARATAH H28

Born: 17/09/2012

LST H28

Colour: White

PRAIRIE HILL JOHN WAYNE 50S

SIRE: WARATAH EDDIE E22 (ET)

NOTTA PHO-FINISH 54P

RIVER HILL SAMSON 25S

DAM: WARATAH EMBER E26 (ET)

STAR BANK 54R

Notes: Waratah H28 is a large framed white cow who was chosen to be apart of our export flush in 2017. She produced 14 embryo which were sold internationally to New Zealand. Her Genetic test results are black, polled and free of myostatin. PTIC to Minnamurra Lancelot L14. PTIC due aprox 8/8/18.

Purchaser: \$



LOT 4 WARATAH H41

Born: 29/02/2012

LST H41

Colour: White

SPOTS N SPROUTS NEFROM 101N

SIRE: STAR BANK KING GEORGE 82U

STAR BANK 11

HWY. 4 SPECKLE PARK 2H

DAM: WARATAH E27

PRAIRIE HILL AMY'S GIRL 21K

Notes: Waratah H41 is a very impressive deep cow and mother to Waratah Loco who sold to Minimurra Pastoral Company in our 2017 sale. We have retained her mother Waratah E27 and have kept a number of her embryos. She is tested as free of myostatin and polled. She is joined to Waratah M14. PTIC details available on the day.

Purchaser: \$



LOT 5 WARATAH AMY J207

Born: 20/07/2013

LST J207

Colour: White

STAR BANK KING GEORGE 82U

SIRE: ALMARLEA KING GEORGE F145

CODIAK 430T

HWY. 4 SPECKLE PARK 2H

DAM: WARATAH AMY'S GIRL E15 (ET)

PRAIRIE HILL AMY'S GIRL 21K

Notes: Waratah Amy J207 is the daughter of our first show winning cow. She shares her quiet nature and deep body. Joined to Minimurra Lancelot L14. PTIC due approx 1/7/18.

Purchaser: \$





Spot on Genetics
FEMALE SALE

45 Speckle Park
Stud Females PTIC

LOT 6 WARATAH PHO-FINISH J51 LST J51
Born: 28/06/2013 Colour: White

P.A.R. MOO FASSA 03M
SIRE: CHAMPAGNE PRETENDER (ET)
NOTTA PRETENDER 64P (ET)
PRAIRIE HILL JOHN WAYNE 50S
DAM: WATTLE GROVE 50S TEEKA G23 (ET)
UPTO SPECS TEEKA 8T

Notes: The first female from the Teeka cow family. We are flushing this cow's half sister for export this year. Joined to Minnamurra Lancelot L14 from 20/11/17 then Waratah M28. PTIC details available sale day.

Purchaser: \$.....

LOT 7 WARATAH GINA J16 LST J16
Born: 13/06/2013 Colour: Speckled

STAR BANK LACERTA 68L
SIRE: WARATAH ECHO E33 (ET)
PRAIRIE HILL AMY'S GIRL 21K
CODIAK CRIKEY GNK 13U
DAM: WATTLE GROVE 26T GINA 68G G8 (ET)
STAR BANK 68G

Notes: One of very few cows for sale from the Gina cow family, her sire Waratah Echo is still performing his stud duties at Pinnacle Speckle Park Oakey QLD at 9 years of age. She is joined to Minnamurra Lancelot L14 from 20/11/17 then Waratah M28. PTIC due aprox 10/10/18.

Purchaser: \$.....

LOT 9 WARATAH E25 AMY K12 LST K12
Born: 10/07/2014 Colour: Speckled

STYALS LIGHTNING LADD 14P
SIRE: SPOTS 'N SPROUTS STANDS ALONE
SPOTS 'N SPROUTS 2R
HWY. 4 SPECKLE PARK 2H
DAM: WARATAH E25 (ET) (BLACK)
PRAIRIE HILL AMY'S GIRL 21K

Notes: Sister to lot 23, Waratah Amy K12 a thick Stands Alone daughter out of our strongest cow family. Amy K12 is also halter broken. She has been a donor cow in two of our flush programs producing 16 and 11 embryos. She is tested as black, polled and free of myostatin. Joined to Waratah M28 from 20/11/17 then Minnamurra Lancelot L14. PTIC details available on sale day.

Purchaser: \$.....



LOT 8 WARATAH E27 AMY J83 LST J83
Born: 1/08/2013 Colour: Speckled

P.A.R. MOO FASSA 03M
SIRE: CHAMPAGNE PRETENDER (ET)
NOTTA PRETENDER 64P (ET)
HWY. 4 SPECKLE PARK 2H
DAM: WARATAH E27 (ET)
PRAIRIE HILL AMY'S GIRL 21K

Notes: Waratah Amy J87 is the mother of the highest selling heifer sold at a Waratah Auction to date. Her daughter Waratah Amy M93 sold to Summerlea Speckle Park South Australia for \$17 500. Joined to Waratah M28 from 20/11/17 then Minnamurra Lancelot L14. PTIC due aprox 5/9/18.

Purchaser: \$.....





Spot on Genetics
FEMALE SALE

*45 Speckle Park
 Stud Females PTIC*

LOT 10 WARATAH AMY K77

Born: 2/08/2014

LST K77

Colour: Black

STAR BANK LACERTA 68L
SIRE: WARATAH SPECKLED GOLD G25 (ET)
 CODIAK UNIQUE GNK 8R

HWY. 4 SPECKLE PARK 2H
DAM: WARATAH E25 (ET) (BLACK)
 PRAIRIE HILL AMY'S GIRL 21K

Notes: K77 is a half sister to the previous lot. She is the first black female in the sale and her calf this year by CN Zpotz Zazu was a stand out. She has been joined to white bulls this year to produce a calf speckled in colour. Joined to Waratah M28 from 20/11/17 then Minnamurra Lancelot L14. PTIC due approx 3/10/18.

Purchaser: \$.....



LOT 11 WARATAH GINA K29

Born: 1/08/2014

LST K29

Colour: Speckled

SPOTS 'N SPROUTS JUNO 103J
SIRE: STAR BANK LACERTA 68L
 STAR BANK 55H

CODIAK CRIKEY GNK 13U
DAM: WATTLE GROVE 26T GINA 68G G8 (ET)
 STAR BANK 68G

Notes: K29 is the second Gina female offered in this year's sale. She has been joined to Waratah M28 and Minnamurra Lancelot L14. PTIC details available on sale day.

Purchaser: \$.....



LOT 12 WARATAH MELISA K70

Born: 13/08/2014

LST K70

Colour: Speckled

P.A.R. SHARP SHOOTER 60S
SIRE: HEARTRIDGE ARIES 01W
 PONDEROSA TIFFANY 06T

CODIAK CRIKEY GNK 13U
DAM: WARATAH MELISA G34 (ET)
 CODIAK MELISA RKW 64M

Notes: Waratah Melisa K70 is a full sister to lot 19 and has a strong family lineage. Her mother was Waratah Melisa G34 who was sold as a foundation cow as a heifer to Mt Eccles Speckle Park Vic. G34 is also the mother of Fish Creek Farm Thunderstruck who is one of the most awarded show bulls as a yearling, winning the Junior Interbreed Champion ribbon at the Melbourne Show against 55 other bulls. She is joined to Waratah M28 from 20/11/17 then Minnamurra Lancelot L14. PTIC due approx 5/09/18.

Purchaser: \$.....





Spot on Genetics
FEMALE SALE

*45 Speckle Park
Stud Females PTIC*

LOT 13 WARATAH G30 AMY K140 LST K140
Born: 15/09/2014 Colour: Speckled

A & W 15R
SIRE: WARATAH HUME (ET)
68L PRARIE HILL AMYS GIRL F8 (ET) (Black)
RIVER HILL 26T WALKER 60W
DAM: WARATAH AMY'S GIRL G30 (ET)
WARATAH E27 (ET)

Notes: K140's mother, Waratah Amy G30 sold to Black Dimond Speckle Park Vic in our first sale in 2014. Her sire Waratah Hume is a show winning bull taking home Champion Speckle Park Bull at the Brisbane Show in 2013 and winning Reserve Senior Champion Speckle Park Bull at Beef Australia 2015. She is Joined to Minnamurra Lancelot L14 from 20/11/17 then Waratah M28. PTIC due approx 3/10/18.

Purchaser: \$.....



LOT 14 WARATAH EMBER K141 LST K141
Born: 13/09/2014 Colour: Speckled

A & W 15R
SIRE: WARATAH HUME (ET)
68L PRARIE HILL AMYS GIRL F8 (ET) (Black)
WARATAH EDDIE E22 (ET)
DAM: WARATAH H28 (ET)
WARATAH EMBER E26 (ET)

Notes: Another Waratah Hume daughter out of Waratah H28 who sells as lot 3 in this sale. She is joined to Minnamurra Lancelot L14 from 20/11/17 then Waratah M28. PTIC due approx 12/9/18.

Purchaser: \$.....



LOT 15 WARATAH E25 AMY K108 LST K108
Born: 1/09/2014 Colour: Speckled

RIVER HILL 26T WALKER 60W
SIRE: WARATAH WILLIS G12 (ET)
CODIAK NICE LADY RKW 25N
HWY. 4 SPECKLE PARK 2H
DAM: WARATAH E25 (ET) (BLACK)
PRAIRIE HILL AMY'S GIRL 21K

Notes: Waratah Amy K108 is a Waratah Willis daughter. She has been AI'd to CN Zpotz Zazu on the 10/11/17 and backed up with Minnamurra Lancelot L14 and Waratah M28. PTIC due aprox 19/8/18.

Purchaser: \$.....





Spot on Genetics
FEMALE SALE

*45 Speckle Park
 Stud Females PTIC*

LOT 16 WARATAH H11 AMY K51 LST K51
 Born: 11/07/2014 Colour: Black

P.A.R. MR. POWERSTROKE 4M
SIRE: P.A.R. PAPA RAZZI 6P
 MONALISA OF P.A.R. 6M
 A & W 15R
DAM: WARATAH H11 (ET)
 68L PRARIE HILL AMYS GIRL F8 (ET) (Black)

Notes: The first Papa Razzi daughter in the sale, her mother Waratah H11 was Female Speckle Park Champion at Beef Australia 2015. She has been joined to white bulls in order to produce a speckled calf. Joined to Waratah M28 from 20/11/17 then Minnamurra Lancelot L14. PTIC due approx 26/09/18.

Purchaser: \$.....



LOT 17 WARATAH SPANISH ANGEL K74 LST K74
 Born: 13/09/2014 Colour: White

A & W 15R
SIRE: WARATAH HUME (ET)
 68L PRARIE HILL AMYS GIRL F8 (ET) (Black)
 STAR BANK KING GEORGE 82U
DAM: WARATAH SPANISH ANGEL F12 (ET)
 RIVER HILL SPANISH ANGEL 5S (Black)

Notes: Waratah Spanish Angel K74's parents are both show winners making her pedigree proven in the show ring on both sides. Joined to Minnamurra Lancelot L14 and Waratah M28. Her PTIC details will be available on sale day.

Purchaser: \$.....



LOT 18 WARATAH PHO-FINISH K139 LST K139
 Born: 13/09/2014 Colour: Speckled

CODIAK OSCAR GNK 8S
SIRE: CODIAK PUTNAM GNK 61Y
 NORTHERN LIGHTS 14N
 PRAIRIE HILL JOHN WAYNE 50S
DAM: WARATAH E23 (ET) (BLACK)
 NOTTA PHO-FINISH 54P

Notes: K139 is full sisters with lot 20 & 24 and the first Putnam cow to be sold in the sale. Her mother, Waratah E23 holds our flush record of 41 embryos in one flush. We are retaining Waratah E23 in our herd. K139's sister has been chosen to be apart of our export flushing program this year. Joined to Minnamurra Lancelot L14 from 20/11/17 then Waratah M28. PTIC due approx 3/10/18.

Purchaser: \$.....





Spot on Genetics
FEMALE SALE

45 Speckle Park
Stud Females PTIC

LOT 19 WARATAH K13

Born: 14/08/2014

LST K13

Colour: Black

P.A.R. SHARP SHOOTER 60S

SIRE: HEARTRIDGE ARIES 01W
PONDEROSA TIFFANY 06T

CODIAK CRIKEY GNK 13U

DAM: WARATAH MELISA G34 (ET)
CODIAK MELISA RKW 64M

Notes: K13's pedigree is a little different from most Speckle Park cattle in Australia, with Heartridge Aries as her sire. She is a full sister to lot 12. K13 has been joined to a white speckle park bull so her calf will be speckled in colour. Joined to Waratah M28 from 20/11/17 then Minnamurra Lancelot L14. PTIC due approx 3/10/18.

Purchaser: \$.....



LOT 20 WARATAH PHO-FINISH K115 LST K115

Born: 1/09/2014

Colour: Speckled

CODIAK OSCAR GNK 8S

SIRE: CODIAK PUTNAM GNK 61Y
NORTHERN LIGHTS 14N

PRAIRIE HILL JOHN WAYNE 50S

DAM: WARATAH E23 (ET) (BLACK)
NOTTA PHO-FINISH 54P

Notes: K115 is a full sister to lot 18 & 24. Her dam Waratah E23, who gave us our record flush of 41 Embryos in one flush, we are retaining in our herd. K115's sister has been chosen to be part of our export flushing program this year. AI'd to CN Zpotz Zazu on the 10/11/17 then backed up with Minnamurra Lancelot L14 and Waratah M28. PTIC due aprox 19/8/18.

Purchaser: \$.....

LOT 21 WARATAH SPANISH ANGEL K35 LST K35

Born: 7/08/2014

Colour: Speckled

STAR BANK LACERTA 68L

SIRE: NOTTA ROMEO 64R
STAR BANK 64L

STAR BANK KING GEORGE 82U

DAM: WARATAH SPANISH ANGEL F12 (ET)
RIVER HILL SPANISH ANGEL 5S (Black)

Notes: These genetics are hard to find. K35 is the only Notta Romeo heifer in the sale. Her embryo brothers are a stand out at the Rose Hill Speckle Park Stud Rylstone NSW. Joined to Minnamurra Lancelot L14 and Waratah M28. PTIC details available on sale day.

Purchaser: \$.....

LOT 22 WARATAH UNIQUE K79

Born: 23/09/2014

LST K79

Colour: White

CODIAK CRIKEY GNK 13U

SIRE: WARATAH HERALD G16 (ET)
CODIAK MELISA RKW 64M

STAR BANK LACERTA 68L

DAM: WARATAH UNIQUE G23 (ET)
CODIAK UNIQUE GNK 8R

Notes: Waratah Unique K79's mother is lot 1. She is joined to Minnamurra Lancelot L14 and Waratah M28. PTIC due approx 30/8/18.

Purchaser: \$.....

LOT 23 WARATAH E25 AMY K57

Born: 21/07/2014

LST K57

Colour: Speckled

STYALS LIGHTNING LADD 14P

SIRE: SPOTS 'N SPROUTS STANDS ALONE
SPOTS 'N SPROUTS 2R

HWY. 4 SPECKLE PARK 2H

DAM: WARATAH E25 (ET) (BLACK)
PRAIRIE HILL AMY'S GIRL 21K

Notes: Stands Alone daughters are slightly smaller in fame size but make up for that with their incredible milking ability. They always raise one of the better calves each year. We have retained another sister on farm. She is sister to lot 9. Joined to Minnamurra Lancelot L14 and Waratah M28. PTIC due approx 16/9/18.

Purchaser: \$.....



Spot on Genetics
FEMALE SALE

*45 Speckle Park
 Stud Females PTIC*

LOT 24 WARATAH PHO-FINISH K119 LST K119
 Born: 8/09/2014 Colour: Speckled

CODIAK OSCAR GNK 8S
SIRE: CODIAK PUTNAM GNK 61Y
 NORTHERN LIGHTS 14N
 PRAIRIE HILL JOHN WAYNE 50S
DAM: WARATAH E23 (ET) (BLACK)
 NOTTA PHO-FINISH 54P

Notes: K119 is sister to lot 18 & 20. We have retained one of her sisters to keep in the Waratah Stud. Joined to Minnamurra Lancelot L14 and Waratah M28. PTIC details available on sale day.

Purchaser: \$.....



LOT 25 WARATAH PHO-FINISH L16 LST L16
 Born: 12/02/2015 Colour: Speckled

LEGACY UNRIVALED 12U
SIRE: CODIAK AMIGO GNK 65Y
 CODIAK GNK 24T
 PRAIRIE HILL JOHN WAYNE 50S
DAM: WARATAH E23 (ET) (BLACK)
 NOTTA PHO-FINISH 54P

Notes: Waratah Pho-Finish L16 raised one of the top calves of all our L Heifers. We are keeping one of her sisters. She has ample milk and a great udder like all the Amigo daughters. Her full sisters have sold for \$15 000 each. One at our on property sale and the other at the Scone National sale in 2017. The heifer sold at Scone was brought as an embryo by Rose Hill Speckle Park Stud. Joined to Waratah M28 from 20/11/17 then Minnamurra Lancelot L14. PTIC due approx 3/10/18.

Purchaser: \$.....



LOT 26 WARATAH EMBER L611 LST L611
 Born: 14/02/2015 Colour: Speckled

LEGACY UNRIVALED 12U
SIRE: CODIAK AMIGO GNK 65Y
 CODIAK GNK 24T
 HWY. 4 SPECKLE PARK 2H
DAM: WARATAH AMY'S GIRL E15 (ET)
 PRAIRIE HILL AMY'S GIRL 21K

Notes: Half sister to the previous Lot. Joined to Minnamurra Lancelot L14 and Waratah M28. PTIC due approx 12/9/19.

Purchaser: \$.....





Spot on Genetics
FEMALE SALE

*45 Speckle Park
 Stud Females PTIC*

LOT 27 WARATAH E25 AMY L79 LST L79
Born: 3/08/2015 Colour: Speckled

CHAMPAGNE PRETENDER (ET)
SIRE: WARATAH J30 (ET)
 WARATAH EMBER E26 (ET)
 HWY. 4 SPECKLE PARK 2H
DAM: WARATAH E25 (ET) (BLACK)
 PRAIRIE HILL AMY'S GIRL 21K

Notes: The first of a very smart group of heifers by Waratah J30 out of Waratah E25. We are very pleased with these females and have kept two in our herd. They are some of the best young females on offer for sale today. There are four to choose from lots 27, 28, 29 & 30. Waratah Amy L79 is joined to Waratah M28 from 20/11/17 then Minnamurra Lancelot L14. PTIC due approx 5/9/18.

Purchaser: \$



LOT 28 WARATAH E25 AMY L81 LST L81
Born: 4/08/2015 Colour: Speckled

CHAMPAGNE PRETENDER (ET)
SIRE: WARATAH J30 (ET)
 WARATAH EMBER E26 (ET)
 HWY. 4 SPECKLE PARK 2H
DAM: WARATAH E25 (ET) (BLACK)
 PRAIRIE HILL AMY'S GIRL 21K

Notes: The second in the group of sisters from the Waratah J30 Waratah E25 combination. It is hard to sell such good heifers but we were able to breed 8 of them from embryos in 2015 and can not keep them all. Sister to lots 27, 29 and 30. We like L81 so much we flushed her as a heifer. She is joined to Waratah M28 from 20/11/17 then Minnamurra Lancelot L14. PTIC due approx 3/10/18.

Purchaser: \$



LOT 29 WARATAH E25 AMY L83 LST L83
Born: 29/07/2015 Colour: Speckled

CHAMPAGNE PRETENDER (ET)
SIRE: WARATAH J30 (ET)
 WARATAH EMBER E26 (ET)
 HWY. 4 SPECKLE PARK 2H
DAM: WARATAH E25 (ET) (BLACK)
 PRAIRIE HILL AMY'S GIRL 21K

Notes: If consistency is the name of the game you are going to be a winner with Waratah Amy L73 as she is identical to her sisters in lots 27, 28 and 30. Joined to Waratah M28 from 20/11/17 then Minnamurra Lancelot L14. PTIC due approx 3/10/18.

Purchaser: \$





LOT 30 WARATAH E25 AMY L73

LST L73

Born: 29/07/2015

Colour: Speckled

CHAMPAGNE PRETENDER (ET)

SIRE: WARATAH J30 (ET)

WARATAH EMBER E26 (ET)

HWY. 4 SPECKLE PARK 2H

DAM: WARATAH E25 (ET) (BLACK)

PRAIRIE HILL AMY'S GIRL 21K

Notes: Don't miss out! L73 is the last of the 4 sisters, lot 27, 28 & 29. She is joined to Waratah M28 from 20/11/17 then Minnamurra Lancelot L14. PTIC due approx 3/10/18.



Purchaser: \$

LOT 31 WARATAH AMY L109

LST L109

Born: 28/07/2015

Colour: White

LEGACY UNRIVALED 12U

SIRE: CODIAK AMIGO GNK 65Y

CODIAK GNK 24T

A & W 15R

DAM: WARATAH AMY J53 (ET)

WARATAH AMY'S GIRL E15 (ET)

Notes: Waratah Amy L109's pedigree goes back to our first show winning heifer Waratah Amy E15. We still also own L109's mother J53. L109 is joined to Waratah M28 from 20/11/17 then Minnamurra Lancelot L14. PTIC due approx 5/9/18.



Purchaser: \$

LOT 32 WARATAH G23 TEEKA L119

LST L119

Born: 28/07/2015

Colour: Speckled

LEGACY UNRIVALED 12U

SIRE: CODIAK AMIGO GNK 65Y

CODIAK GNK 24T

STAR BANK KING GEORGE 82U

DAM: WARATAH TEEKA J210 (ET)

WATTLE GROVE 50S TEEKA G23 (ET)

Notes: A nice first calver here from the Teeka family. She has a quiet nature just like her father Codiak Amigo. Joined to Waratah M28 from 20/11/17 then Minnamurra Lancelot L14. PTIC due approx 3/10/18.



Purchaser: \$



Spot on Genetics
FEMALE SALE

45 Speckle Park
Stud Females PTIC

LOT 33 WARATAH E27 AMY L92

Born: 27/07/2015

LST L92

Colour: White

LEGACY UNRIVALED 12U
SIRE: **CODIAK AMIGO GNK 65Y**
CODIAK GNK 24T

HWY. 4 SPECKLE PARK 2H
DAM: **WARATAH E27 (ET)**
PRAIRIE HILL AMY'S GIRL 21K

Notes: A sound white heifer by Amigo out of one of our best cows Waratah E27. She shares the same milking ability and udder as her mother. Joined to Waratah M28 from 20/11/17 then Minnamurra Lancelot L14. PTIC due approx 3/10/18.

Purchaser: \$.....

LOT 34 WARATAH MELISA L107

Born: 15/10/2015

LST L107

Colour: Black

STAR BANK LACERTA 68L
SIRE: **WARATAH SPECKLED GOLD G25 (ET)**
CODIAK UNIQUE GNK 8R

BUNDERRA 68L GOANNA E12 (ET)
DAM: **WARATAH G46 MELISSA J86 (ET) (BLACK)**
WATTLE GROVE 60W MELISSA G46 (ET)

Notes: This black heifer has been joined to a white bull to ensure a speckle calf. Joined to Waratah M28 from 20/11/17 then Minnamurra Lancelot L14. PTIC due approx 3/10/18.

Purchaser: \$.....

LOT 35 WARATAH H23 SPANISH ANGEL L74 LST L74

Born: 3/08/2015

Colour: White

LEGACY UNRIVALED 12U
SIRE: **CODIAK AMIGO GNK 65Y**
CODIAK GNK 24T

STAR BANK LACERTA 68L
DAM: **WARATAH H23 (ET)**
WARATAH SPANISH ANGEL F12 (ET)

Notes: L74 is fertile just like her mother Waratah Spanish Angel H23, who sold to Mojo-Ridge Speckle Parks Macclesfield SA as a foundation cow to start their Speckle Park stud. Waratah H23 produced 52 embryos to average 10.4 embryos per flush before we sold her. We think this heifer with H23 as her dam and with Amigo as her sire should produce similar results. If she were staying at Waratah she might find herself in the Donor Paddock. PLEASE NOTE: *Waratah Spanish Angel L74 sells with a white crossbred heifer calf at foot. This calf will not be able to be registered with SPI. Please consider this when bidding.*

Purchaser: \$.....



LOT 36 WARATAH PHO FINISH M137 LST M137

Born: 24/07/2016

Colour: Speckled

YOGI GOES REDNECK
SIRE: **JOHNER STOCK FARM TRADE SECRET**
MONNERY RIVER 7W

PRAIRIE HILL JOHN WAYNE 50S
DAM: **WARATAH E23 (ET) (BLACK)**
NOTTA PHO-FINISH 54P

Notes: This Pho-Finish heifer was a stand out as a calf in the heifer embryo calving group, as were all the Trade Secret/Waratah E23 calves. Her brother and sisters can be found in our show team for Beef Australia 2018. M137 is sister to lot 38. Joined to Minnamurra Lancelot L14. PTIC details available on sale day.

Purchaser: \$.....





Spot on Genetics
FEMALE SALE

*45 Speckle Park
 Stud Females PTIC*

LOT 37 WARATAH EMBER M127 LST M127
 Born: 24/07/2016 Colour: White

YOGI GOES REDNECK
SIRE: JOHNER STOCK FARM TRADE SECRET
 MONNERY RIVER 7W

PAR PAPA RAZZI 6P
DAM: WARATAH EMBER J185
 WARATAH EMBER E26

Notes: A stunning Trade Secret daughter out of our Ember family line. One not to be missed. PTIC details available on the day.



Purchaser: \$.....

LOT 38 WARATAH PHO FINISH M123 LST M123
 Born: 26/07/2016 Colour: Speckled

YOGI GOES REDNECK
SIRE: JOHNER STOCK FARM TRADE SECRET
 MONNERY RIVER 7W

PRAIRIE HILL JOHN WAYNE 50S
DAM: WARATAH E23 (ET) (BLACK)
 NOTTA PHO-FINISH 54P

Notes: Sister to lot 36, this Pho-Finish heifer was a stand out as a calf in the heifer embryo calving group, as were all the Trade Secret/Waratah E23 calves. Her brother and sisters can be found in our show team for Beef Australia 2018. Joined to Waratah M14. PTIC due approx 6/9/18.



Purchaser: \$.....

LOT 39 WARATAH AMY M115 LST M115
 Born: 24/07/2016 Colour: Speckled

SPOTS AND SPROUTS DYNAMITE 23T
SIRE: ASPEN ACRES T.N.T. 4Y
 ASPEN ACRES 4U

CHAMPAGNE PRETENDER (ET)
DAM: WARATAH E27 AMY J83 (ET)
 WARATAH E27 (ET)

Notes: A different pedigree here with Aspen Acers TNT as her sire. M115's full sister Waratah Amy M93 sold to Summerlea Speckle Park South Australia for \$17 500 in our 2017 sale. Al'd to Yogi Goes Red Neck on 3/11/17 and backed up to Waratah M14. PTIC due approx 12/8/18.



Purchaser: \$.....



LOT 40 WARATAH PHO FINISH M140 LST M140

Born: 18/09/2016

Colour: White

HEARTRIDGE ARIES 01W

SIRE: WARATAH KINCROME K027 (ET)

WARATAH E27 (ET)

CODIAK PUTNAM GNK 61Y

DAM: WARATAH PHO-FINISH K115 (ET)

WARATAH E23 (ET) (Black)

Notes: A Waratah Kingcrome K27 heifer who looks a lot like her grandma Waratah E27. Joined to Waratah M14. PTIC due approx 13/9/18.

Purchaser: \$.....



LOT 41 WARATAH AMY M121

Born: 13/08/2016

LST M121

Colour: White

LEGACY UNRIVALED 12U

SIRE: CODIAK AMIGO GNK 65Y

CODIAK GNK 24T

SPOTS 'N SPROUTS STANDS ALONE

DAM: WARATAH E25 AMY K56 (ET)

WARATAH E25 (ET) (Black)

Notes: A white Amigo heifer who's mother K56 we have kept on at waratah. Joined to Waratah M14. PTIC due approx 30/8/18

Purchaser: \$.....



LOT 42 WARATAH AMY M141

Born: 8/09/2016

LST M141

Colour: Speckled

CODIAK PUTNAM GNK 61Y

SIRE: WARATAH KOOLIE K133 (ET)

68L PRARIE HILL AMYS GIRL F8 (ET) (Black)

A & W 15R

DAM: WARATAH F8 AMY K68 (ET)

68L PRARIE HILL AMYS GIRL F8 (ET) (Black)

Notes: The only Waratah Koolie heifer in the sale. Joined to Waratah M14. PTIC due approx 27/9/18.

Purchaser: \$.....





PTIC SPECKLE PARK STUD FEMALES



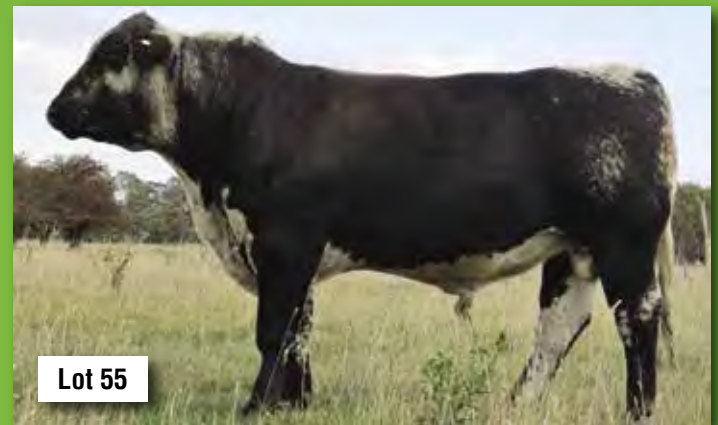


PTIC SPECKLE PARK STUD FEMALES





SPECKLE PARK STUD BULLS





PTIC BRAHCKLE FEMALES





Spot on Genetics FEMALE SALE

45 Speckle Park
Stud Females PTIC

LOT 43 WARATAH AMY M131

Born: 15/09/2016

LST M131

Colour: Speckled

HEARTRIDGE ARIES 01W

SIRE: WARATAH KEEPER K067 (ET)

PONDEROSA CODIAK KELLIE GNK 2X

CHAMPAGNE PRETENDER (ET)

DAM: WARATAH E27 AMY J83 (ET)

WARATAH E27 (ET)

Notes: This heifer's grand dam is probably one of the most proven cows in the country, having calves born every year since 2011 and embryo calves to be born in multiple states and countries this year. Al'd to Yogi Goes Red Neck on 3/11/17 and backed up to Waratah M14. PTIC due approx. 12/8/18.



Purchaser: \$.....

LOT 44 WARATAH EMBER M122

Born: 19/08/2016

LST M122

Colour: Black

PAR SHARP SHOOTER 60S

SIRE: HEARTRIDGE ARIES 01W

PONDEROSA TIFFANY 06T

CHAMPAGNE PRETENDER

DAM: WARATAH EMBER J37

WARATAH EMBER E26

Notes: Joined to Waratah M14. PTIC details available on sale day.

LOT 45 WARATAH EMBER M116

Born: 10/09/2016

LST M116

Colour: White

HEARTRIDGE ARIES 01W

SIRE: WARATAH KEEPER K067 (ET)

PONDEROSA CODIAK KELLIE GNK 2X

CHAMPAGNE PRETENDER (ET)

DAM: WARATAH EMBER J40 (ET)

WARATAH EMBER E26 (ET)

Notes: Waratah Ember M116's dam recently sold to Deeargee Speckle Park Stud Uralla NSW. Joined to Waratah M14. PTIC details available on sale day.

Purchaser: \$.....

Purchaser: \$.....





Spot on Genetics
FEMALE SALE

4 Speckle Park Stud Heifers

LOT 46 WARATAH SPANISH ANGEL N02 LST N02
Born: 9/09/2017 Colour: Speckle

SIX STAR ROYAL FLESH 101Y
SIRE: MINNAMURRA LANCELOT L14
SIX STAR PENELOPE G29

STAR BANK KING GEORGE 82U
DAM: WARATAH SPANISH ANGEL F15
RIVER HILL SPANISH ANGEL 5S

Notes: First Minnamurra Lancelot L14 heifer available for sale. Should make a fine show prospect.

Purchaser: \$.....

LOT 47 WARATAH PHO-FINISH N03 LST N03
Born: 2/09/2017 Colour: Speckle

LEGACY TURNPIKE CRUISER 27T
SIRE: CN ZPOTZ ZAZU 2Z
PRAIRIE HILL NIRVANA 4N

PRAIRIE HILL JOHN WAYNE 50S
DAM: WARATAH E23 (ET) (BLACK)
NOTTA PHO-FINNISH 54P

Notes: N03 is the first Zazu heifer for sale in Australia. Her Dam Waratah E23, produced 41 embryos in a single flush. She should grow into a large fertile cow just like her mother.

Purchaser: \$.....

LOT 48 WARATAH SPANISH ANGEL N04 LST N04
Born: 3/09/2017 Colour: Speckle

LEGACY TURNPIKE CRUISER 27T
SIRE: CN ZPOTZ ZAZU 2Z
PRAIRIE HILL NIRVANA 4N

STAR BANK KING GEORGE 82U
DAM: WARATAH SPANISH ANGEL F15
RIVER HILL SPANISH ANGEL 5S

Notes: Second and last chance for a Zazu heifer this sale. She is almost identical to her half sister lot 47. N04 should grow into a fancy female.

Purchaser: \$.....

LOT 49 WARATAH AMY N05 LST N05
Born: 31/08/2017 Colour: Speckle

A & W 15R
SIRE: HS UNTAPPED 3A
NOTTA PRETENDER 4T

SPOTS N SPROUTS STANDS ALONE
DAM: WARATAH AMY K12
WARATAH E25

Notes: N05 is the first untapped heifer Waratah has sold. She is a later maturing animal, who is finer boned and should grow into a fine female.

Purchaser: \$.....





Spot on Genetics
FEMALE SALE

*6 Hand Selected
 Stud Speckle Park Bulls*

LOT 50 WARATAH MAC M72

Born: 22/08/2016

LST M72

Colour: White

CHAMPAGNE PRETENDER (ET)
SIRE: WARATAH J30 (ET)
 WARATAH EMBER E26 (ET)

A & W 15R

DAM: WARATAH GINA J119 (ET)
 WATTLE GROVE 26T GINA 68G G8 (ET)

Notes: Waratah Mac M72 is 100% Waratah Breed having Waratah J30 as his sire & Waratah Gina J119 as his dame. The J30 bulls were a standout line in our 2017 sale and Mac is no different. A soft bodied, easy doing bull which will make a great future sire.



Purchaser: \$

LOT 51 WARATAH MADE YOU LOOK M73 LST M73

Born: 21/08/2016

Colour: White

PAR SHARP SHOOTER 60S
SIRE: HEARTRIDGE ARIES 01W
 PONDEROSA TIFFANY 06T

WATTLE GROVE ALMIGHTY E41

DAM: WARATAH TEEKA J141
 WATTLE GROVE TEEKA G23

Notes: A slightly different pedigree here. Waratah Look At Me's mother was the dam of our 2017 on property sale topping bull. With Aries as his sire, he gives you something a little different to mainstream Speckle Park lines.



Purchaser: \$

LOT 52 WARATAH MAGIC M03

Born: 28/07/2016

LST M03

Colour: White

PAR PAPA RAZZI 6P
SIRE: PAR THROTTLE 66T
 ROB N SON'S FARMS 6P

HWY 4 SHOW STOPPER 2S

DAM: RAINA OF PAR 54U
 RAINA OF PAR 54R

Notes: Here is one of our favourite bulls. A total outcross to most Speckle Parks in Australia. His brother Waratah Magic M28 is the joining sire to a lot of females in today's sale. This bull is a canadian embryo, who has brothers and sisters in Canada, UK and now Australia. We are keeping a semen share in this bull. He is an eye catching sire with good length and muscle expression. A definite stud sire in the making.



Purchaser: \$



Spot on Genetics FEMALE SALE

6 Hand Selected Stud Speckle Park Bulls

LOT 53 WARATAH MALIBU M26

Born: 26/07/2016

LST M26

Colour: White

RIVER HILL PATH FINDER 22P
SIRE: RIVER HILL SAMSON 25S
RIVER HILL PRIDE 'N JOY 25P
HWY. 4 SPECKLE PARK 2H
DAM: WARATAH E27 (ET)
PRAIRIE HILL AMY'S GIRL 21K

Notes: Here is one of the best bulls we have breed to date. His fertility will be second to none with his mother being one of the most fertile cows in the country. His thickness and quiet nature are an asset. We are keeping a semen share in this bull.



Purchaser: \$.....

LOT 54 WARATAH MARS M17

Born: 20/07/2016

LST M17

Colour: Speckle

YOGI GOES REDNECK
SIRE: JOHNER STOCK FARM TRADE SECRET
MONNERY RIVER 7W
SPOTS 'N SPROUTS STANDS ALONE
DAM: WARATAH E25 AMY K12 (ET)
WARATAH E25 (ET) (Black)

Notes: The first Trade Secret son Waratah is offering at auction. He is a soft easy doing bull. His mother is lot 9 in this year's sale. We are keeping a semen share in this bull. There will be more Trade Secret sons in our Bull Sale July 9.



Purchaser: \$.....

LOT 55 WARATAH MIAMI M63

Born: 24/07/2016

LST M63

Colour: Speckle

P.A.R. TOUCH DOWN 600T
SIRE: PAR ACE IN A HOLE 66A
P.A.R. WONDER BRA 66W
STAR BANK LACERTA 68L
DAM: WARATAH H23 (ET)
WARATAH SPANISH ANGEL F12 (ET)

Notes: The first Ace In A Hole bull offered for auction at a Waratah Sale. If your looking for different genetics this might be the bull for you. His dam Waratah H23 sold to Mojo-ridge Speckle Parks South Australia as their first foundation female.



Purchaser: \$.....



LOT 56 PREGNANT RECIP - WARATAH SPANISH ANGEL J194 X CODIAK SPENCER 52B PTIC



CODIAK OSCAR GNK 8S
SIRE: CODIAK SPENCER 52B
CODIAK WILLA 13W

WATTLEGROVE MOONSHINE E10
DAM: WARATAH SPANISH ANGEL J194
WARATAH SPANISH ANGEL F15

Waratah Spanish Angel J194 x Codiak Spencer 52B PTIC recipient female. Codiak Spencer was the stand out bull to me at the 2016 Summit 3 sale in Canada. He has extra length of body just like his father Oscar. He is joined to a fantastic young female Waratah Spanish Angel J194. A great opportunity to get a headstart in the world of Speckle Park breeding. This embryo combination also sell at lot 94.

Purchaser: \$.....

LOT 57 PREGNANT RECIP - WARATAH SPANISH ANGEL J194 X CODIAK SPENCER 52B PTIC

Purchaser: \$.....

LOT 58 PREGNANT RECIP - WARATAH SPANISH ANGEL J194 X CODIAK SPENCER 52B PTIC

Purchaser: \$.....

LOT 59 PREGNANT RECIP - WARATAH E27 X WARATAH J30 PTIC



PHOTO AT 9 MONTHS OF AGE

CHAMPAGNE PRETENDER D1
SIRE: WARATAH J30
WARATAH EMBER E26

HWY. 4 SPECKLE PARK 2H
DAM: WARATAH E27
PRAIRE HILL AMY'S GIRL 21K

We have some high expectations for the PTIC embryos of this combinabtion. With the dam being Waratah E27 and father Waratah J30, two of Waratah's star performers, the calf should have great show potential.

Purchaser: \$.....



LOT 60 PREGNANT RECIP - WARATAH E27 X WARATAH J30 PTIC

Purchaser: \$.....

LOT 61 PREGNANT RECIP - WARATAH E27 X WARATAH J30 PTIC

Purchaser: \$.....

LOT 62 PREGNANT RECIP - WARATAH E27 X WARATAH J30 PTIC

Purchaser: \$.....

LOT 63 PREGNANT RECIP - WARATAH E27 X WARATAH J30 PTIC

Purchaser: \$.....

LOT 64 PREGNANT RECIP - WARATAH PHO-FINISH L711 X WARATAH J30 PTIC



PHOTO AT 9 MONTHS OF AGE

CHAMPAGNE PRETENDER D1

SIRE: WARATAH J30
WARATAH EMBER E26



CODIAK AMIGO GNK 65Y

DAM: WARATAH PHO-FINISH L711
WARATAH E23 (ET)

These are the newest genetics available at Waratah as this is the first time Waratah Pho-Finish L711 has been flushed. L711 is an Amigo daughter who raised a fantastic first calf. She is very structurally correct with a good milk supply. Joined to one of our home grown sires Waratah J30 who was the highest selling yearling bull in our very first sale. J30 also sired an outstanding line of bulls in our 2017 sale. We continue to use him in our breeding today and plan to into the future.

Purchaser: \$.....

LOT 65 PREGNANT RECIP - WARATAH PHO-FINISH L711 X WARATAH J30 PTIC

Purchaser: \$.....

LOT 66 PREGNANT RECIP - WARATAH PHO-FINISH L711 X WARATAH J30 PTIC

Purchaser: \$.....



LOT 67 PREGNANT RECIPI - WARATAH AMY K144 X JSF TRADE SECRET 11A PTIC



YOGI GOES REDNECK 7Y
SIRE: JSF TRADE SECRET 11A
MONNERY RIVER 7W

CODIAK AMIGO GNK 65Y
DAM: WARATAH AMY K144
WARATAH E25

This embryo calf should be a stand out as they come from one of our newest donor females Waratah Amy K144 who is set to become one of our stars in the future. The embryo sire is Trade Secret who is fast becoming a star in his own right at Waratah, you only need to look at his progeny so far.

Purchaser: \$.....

LOT 68 PREGNANT RECIPI - WARATAH SPANISH ANGEL F15 X JSF TRADE SECRET 11A PTIC



YOGI GOES REDNECK 7Y
SIRE: JSF TRADE SECRET 11A
MONNERY RIVER 7W

STAR BANK KING GEORGE 82U
DAM: WARATAH SPANISH ANGEL F15
RIVER HILL SPANISH ANGEL 5S

If you are after proven genetics look at these PTIC embryos. Dam is Waratah Spanish Angel F15 a cow with 14 registered progeny to date, and sire JSF Trade secret with 72 registered progeny. Embryos also sell at lot 93.

Purchaser: \$.....

LOT 69 PREGNANT RECIPI - WARATAH SPANISH ANGEL F15 X JSF TRADE SECRET 11A PTIC

Purchaser: \$.....

LOT 70 PREGNANT RECIPI - WARATAH SPANISH ANGEL F15 X JSF TRADE SECRET 11A PTIC

Purchaser: \$.....

LOT 71 PREGNANT RECIPI - WARATAH SPANISH ANGEL F15 X JSF TRADE SECRET 11A PTIC

Purchaser: \$.....



Spot on Genetics
FEMALE SALE

14 Brahckle Females
PTIC

LOT 72 WARATAH H8

Born: 20.06.2012

LST H8

Colour: Speckle

STAR BANK LACERTA 68L

SIRE: WARATAH ELLIS E28

PRAIRIE HILL AMY'S GIRL 21K

NELO 1543 SR MAXIMUS

DAM: NESLO 2375 MX LILL

NESLO 1488 V8 LILL

Notes: The first three females on offer are out of the heart of the Waratah Brahckle breeding program. Waratah H8 is one of our foundation Brahckle females. Her flush record averages 12.7. We now have decided to part with some of our top Brahckle females due to the need to expand our Brahckle herd. We have retained all her embryos except the 4 being sold in this sale as lot 98. She is 50% SPECKLE PARK 50% BRAHMAN. Joined to Minnamurra Lancelot L14. PTIC due approx 18/8/18.

Purchaser: \$.....



LOT 73 WARATAH H7

Born: 19.06.2012

LST H7

Colour: Speckle

BELMORAL'S SPECIAL 99H

SIRE: A&W 15R

TRIPLE A GEM 15G

GRAADU MR 407

DAM: DONNA LEIGH PARK MISS LORRY 242

GRAADU MISS LORETA V20

Notes: Waratah H7 is the type of female that grabs everybody's attention. She has an eye appeal about her that most people comment on when they visit the farm. We have retained all her embryos except the ones in this sale as lots 97, 99 and 100. She has two sisters in the sale but in our opinion is the best of the three her sisters are Lots 74 and 75 she is 50% SPECKLE PARK 50% BRAHMAN and is PTIC to Minnamurra Lancelot L14 due approx 15/6/18

Purchaser: \$.....



LOT 74 WARATAH J63

Born: 24.07.2013

LST J63

Colour: Speckle

BELMORAL'S SPECIAL 99H

SIRE: A&W 15R

TRIPLE A GEM 15G

GRAADU MR 407

DAM: DONNA LEIGH PARK MISS LORRY 242

GRAADU MISS LORETA V20

Notes: Waratah J63 is a full sister to lot 73. We are expecting some good embryo calves this year from J63. She is 50% SPECKLE PARK 50% BRAHMAN. PTIC to Minnamurra Lancelot L14. Due approx 15/8/18.

Purchaser: \$.....





Spot on Genetics
FEMALE SALE

14 Brahckle Females
PTIC

LOT 75 WARATAH J66

Born: 25.07.2013

LST J66

Colour: Speckle

BELMORAL'S SPECIAL 99H

SIRE: A&W 15R

TRIPLE A GEM 15G

GRAADU MR 407

DAM: DONNA LEIGH PARK MISS LORRY 242

GRAADU MISS LORETA V20

Notes: J66 is sister to lots 73 & 74. She is 50% SPECKLE PARK 50% BRAHMAN. AI'd to CN Zpotz Zazu on the 10/11/17. PTIC due approx 19/8/18. This calf will be 75% SPECKLE PARK. To see what this calf my look like, take a look at lots 82, 83 & 84.



Purchaser: \$.....

LOT 76 WARATAH J134

Born: 06.09.2013

LST J134

Colour: Speckle

RIVER HILL TRAFIC JAM 26T

SIRE: WARATAH FLASH F7

CALAMASUE 26R

SAVANNAH MR SUGERLAND 062

DAM: LETOKEN ONE UPON A TIME 1202

LETOKEN INTRIGUE

Notes: 50% SPECKLE PARK 50% BRAHMAN. AI'd to CN Zpotz Zazu on the 10/11/17. PTIC due approx 19/8/18. This calf will be 75% SPECKLE PARK.



Purchaser: \$.....

LOT 77 WARATAH K114

Born: 22.08.14

LST K114

Colour: Black

STAR BANK LACERTA 68L

SIRE: WARATAH SPECKLED GOLD G25

CODIAK UNIQUE 8R

GRAY BRAHMAN

DAM: GRAY BRAHMAN 352

GRAY BRAHMAN

Notes: 50% SPECKLE PARK 50% BRAHMAN. AI'd to CN Zpotz Zazu on the 10/11/17. PTIC due approx 19/8/18. This calf will be 75% SPECKLE PARK. As Zazu is a white bull the resulting calf from this joining will be speckled in colour.

LOT 78 WARATAH K19

Born: 25.07.2014

LST K19

Colour: Black

STAR BANK LACERTA 68L

SIRE: WARATAH SPECKLED GOLD G25

CODIAK UNIQUE 8R

WARATAH ELLIS E28

DAM: WARATAH H7

DONNA LEIGH PARK MISS LORRY 242

Notes: The first natural calf of Waratah H7 (lot 73). She is also the mother to lot 85. K19 is 75% SPECKLE PARK 25% BRAHMAN. Joined to Waratah M28 from 20/11/17 then Minnamurra Lancelot L14. PTIC due approx 3/10/18.

Purchaser: \$.....

Purchaser: \$.....



Spot on Genetics
FEMALE SALE

14 Brahckle Females
PTIC

LOT 79 WARATAH K17

Born: 22.07.2014

LST K17

Colour: Speckle

STAR BANK LACERTA 68L
SIRE: WARATAH SPECKLED GOLD G25
 CODIAK UNIQUE 8R

WARATAH ELLIS E28
DAM: WARATAH H1
 LETOKEN ONE UPON A TIME 1202

Notes: 75% SPECKLE PARK 25% BRAHMAN. AI'd to CN Zpotz Zazu on the 10/11/17. PTIC due approx 19/8/18. The calf will only have 12.5% BRAHMAN content. To see what this calf might be like, take a look at lot 85.

Purchaser: \$



LOT 80 WARATAH K103

Born: 15.08.2014

LST K103

Colour: White

STAR BANK LACERTA 68L
SIRE: WARATAH SPECKLED GOLD G25
 CODIAK UNIQUE 8R

WARATAH ELLIS E28
DAM: WARATAH H8
 NESLO 2375 MX LILL

Notes: 75% SPECKLE PARK 25% BRAHMAN. Joined to Minnamurra Lancelot L14. PTIC details available on sale day.

Purchaser: \$



LOT 81 WARATAH L110

Born: 30.08.2015

LST L110

Colour: Speckle

LEGACY UNRIVALED 12U
SIRE: CODIAK AMIGO 65Y
 CODIAK GNK 24T

WARATAH FLASH F7
DAM: WARATAH J134
 LETOKEN ONE UPON A TIME 1202

Notes: The only first calf Brahckle heifer in the Auction. 75% SPECKLE PARK 25% BRAHMAN. Joined to Waratah M28 from 20/11/17 then Minnamurra Lancelot L14. PTIC due approx 5/9/18.

Purchaser: \$

LOT 82 WARATAH M146

Born: 10.10.2016

LST M146

Colour: Speckle

HEARTRIDGE ARIES 01W
SIRE: WARATAH KEEPER K67
 PONDEROSA KELLIE 2X

WARATAH ELLIS E28
DAM: WARATAH H1
 LETOKEN ONE UPON A TIME 1202

Notes: These F2 heifers are what we are trying to achieve with our brahckle breeding program. The Brahman content gives them slick skin with no hump while the Speckle Park gives added thickness and carcass. 75% SPECKLE PARK 25% BRAHMAN. AI'd to Yogi Goes Red Neck on 3/11/17. PTIC due approx 12/8/18.

Purchaser: \$



Spot on Genetics
FEMALE SALE

14 Brahckle Females
PTIC

LOT 83 WARATAH M148

Born: 09.09.2016

LST M148

Colour: Speckle

SPECKLE PARK
SIRE: SPECKLE PARK
 SPECKLE PARK

WARATAH ELLIS E28
DAM: WARATAH H2
 NESLO 2375 MX LILL

Notes: This fertile heifer took to her first AI on 3/11/17 to Yogi Goes Red Neck. PTIC due approx 12/8/18. She is 75% SPECKLE PARK 25% BRAHMAN.

Purchaser: \$.....

LOT 84 WARATAH M151

Born: 25.08.2016

LST M151

Colour: White

CHAMPAGNE PRETENDER
SIRE: WARATAH J30
 WARATAH EMBER E26

WARATAH ELLIS E28
DAM: WARATAH H7
 DONNA LEIGH PARK MISS LORRY 242

Notes: We have saved the best F2 Brahckle heifer for last with Waratah M151. She is 75% SPECKLE PARK 25% BRAHMAN. Joined to Waratah M14. PTIC due approx 30/8/18.

Purchaser: \$.....

LOT 85 WARATAH M149

Born: 19.08.2016

LST M149

Colour: Speckle

LEGACY UNRIVALED 12U
SIRE: CODIAK AMIGO 65Y
 CODIAK GNK 24T

WARATAH SPECKLED GOLD G25
DAM: WARATAH K19
 WARATAH H7

Notes: The only F3 brahckle heifer in the sale. She is 87.5% SPECKLE PARK 12.5% BRAHMAN. Joined to Waratah M14. PTIC due approx 30/8/18.

Purchaser: \$.....





LOT 86 3 X 18 MONTH OLD ANGUS & MURRAY GREY X SPECKLE PARK HEIFERS

Notes: PTIC to Speckle Park bull. PTIC details available sale day.

Purchaser: \$.....

LOT 87 10 X RISING TWO YEAR OLD ANGUS HEIFERS BASED ON KILBURNIE BLOODLINES

Notes: PTIC to Speckle Park bull. PTIC details available sale day.

Purchaser: \$.....

LOT 88 10 X RISING TWO YEAR OLD ANGUS HEIFERS BASED ON KILBURNIE BLOODLINES

Notes: Joined to Waratah LST M9. PTIC details available sale day.

Purchaser: \$.....

LOT 89 10 X RISING TWO YEAR OLD ANGUS HEIFERS BASED ON KILBURNIE BLOODLINES

Notes: Joined to Waratah LST M9. PTIC details available sale day.

Purchaser: \$.....

LOT 90 10 X RISING TWO YEAR OLD ANGUS HEIFERS BASED ON KILBURNIE BLOODLINES

Notes: Joined to Waratah LST M9. More details available sale day.

Purchaser: \$.....

LOT 91 5 ANGUS HERIFORD SHORTHORN CROSS HEIFERS

Notes: Al'd to Yogi Goes Red Neck on 3/11/2017 then joined to Waratah M14. Four of the heifers are PTIC to AI and one to the bull.

Purchaser: \$.....



LOT 92 4 EMBRYOS: WARATAH E27 X JSF CONTINENTAL 9C

AUSTRALIA USE ONLY



CODIAK CALVIN 58Y
SIRE: JSF CONTINENTAL 9C
 MONNERY RIVER 7X

HWY. 4 SPECKLE PARK 2H
DAM: WARATAH E27
 PRAIRE HILL AMY'S GIRL 21K

Waratah E27 is one of three sisters that started the Amy cow family at Waratah. Her speckled sister was our first show winning cow and her black sister has embryos selling also in this sale at lot 96. Waratah E27 is the highest producing cow at Waratah with 68 registered progeny and counting. She is soon to have progeny born internationally. We believe she would be the most proven cow we have, even better than G17 who is for sale as lot 2. To give you an idea of her fertility, her embryos average 15.13 per flush with over 200 embryos produced to date. Her genetics and progeny sold in 2017 for over \$100 000. She is a deep bodied cow with a good udder and milk supply. She is joined to JSF Continental 9C, a new Canadian sire. This embryo combination is sure to be exciting. There will only be limited Continental genetics available as he is unfortunately no longer alive so don't miss this fantastic opportunity! Waratah E27 is tested Homozygous Polled and free of Myostatin.

Purchaser: \$.....

LOT 93 4 EMBRYOS: WARATAH SPANISH ANGEL F15 X JSF TRADE SECRET 11A AUSTRALIA USE ONLY



YOGI GOES REDNECK 7Y
SIRE: JSF TRADE SECRET 11A
 MONNERY RIVER7W

STAR BANK KING GEORGE 82U
DAM: WARATAH SPANISH ANGEL F15
 RIVER HILL SPANISH ANGEL 5S

Waratah Spanish Angel F15 is a full sister to our first interbreed Champion Female Waratah Spanish Angel F12. F15 is the mother of two donor cows chosen for our export flushing program this year. She is another one of the very fertile females we own, having produced 72 embryos to date. Joined to JSF Trade Secret, her calves should be speckled in colour. Have a look at the quality of the Trade Secret heifers in this sale and you will agree this is an opportunity not to be missed. You can also find a Trade Secret heifer in our show team for beef Australia 2018. F15 is tested Homozygous Polled and free of Myostatin

Purchaser: \$.....



LOT 94 4 EMBRYOS: WARATAH SPANISH ANGEL J194 X JSF CONTINENTAL 9C AUSTRALIA USE ONLY



CODIAK CALVIN 58Y
SIRE: JSF CONTINENTAL 9C
MONNERY RIVER 7X



WATTLE GROVE MOONSHINE E10
DAM: WARATAH SPANISH ANGEL J194
WARATAH SPANISH ANGEL F15

Waratah Spanish Angel J194 is the daughter of F15. She has been chosen for this years export flushing program. She always raises a stand out calf. J194 is the type of female we will be keeping for her lifetime. Her sire is Wattle Grove Moonshine, a high performing sire who goes back to HWY 4 Speckle Park 2H on his sire's side. HWY 4 Speckle Park 2H is also the sire for our strongest cow family. J194 has been joined to JSF Continental 9C, one of the newest and limited Canadian genetics available in Australia.

Purchaser: \$.....

LOT 95 4 EMBRYOS: WARATAH SPANISH ANGEL J194 X CODIAK SPENCER 52B AUSTRALIA USE ONLY



CODIAK OSCAR GNK 8S
SIRE: CODIAK SPENCER 52B
CODIAK WILLIA 13W



WATTLE GROVE MOONSHINE E10
DAM: WARATAH SPANISH ANGEL J194
WARATAH SPANISH ANGEL F15

Waratah Spanish Angel J194 x Codiak Spencer 52B embryos are qualified for Australia only. Codiak Spencer was the standout bull to me at the 2016 Summit 3 sale in Canada. He has extra length of body just like his father Oscar. This will be the first embryos available from Spencer sold by Waratah. He has been joined to a fantastic young female Waratah Spanish Angel J194. This is a great opportunity to get a headstart in the world of Speckle Park breeding.

Purchaser: \$.....



LOT 96 4 EMBRYOS: WARATAH E25 X JSF CONTINENTAL 9C

AUSTRALIA USE ONLY



CODIAK CALVIN 58Y
SIRE: JSF CONTINENTAL 9C
MONNERY RIVER 7X

HWY. 4 SPECKLE PARK 2H
DAM: WARATAH E25
PRAIRE HILL AMY'S GIRL 21K

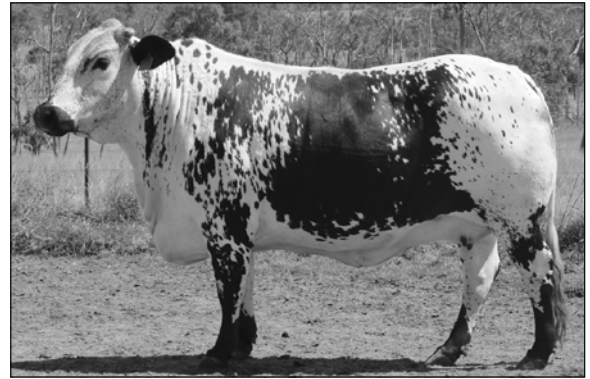
Waratah E25 is one of the fantactic three cows that make our foundation for the Amy cow family. She was the cow chosen last year by Pinnacle Speckle Park, Oakey QLD, for the 'Pick of the Herd Flush' purchased at our 2017 Sale. To see how well this cow breeds and the consistency in her embryo daughters take a look at lots 27, 28, 29 and 30. She has been joined to JSF Continental 9C. Embryos are qualified for Australia only. We will have exportable embryos for sale in our Bull sale on 9 July and also for private sale.

Purchaser: \$.....





LOT 97 4 EMBRYOS: WARATAH H7 X JSF CONTINENTAL 9C



CODIAK CALVIN 58Y
SIRE: JSF CONTINENTAL 9C
MONNERY RIVER 7X

A&W 15R
DAM: WARATAH H7
DONNA LEIGH PARK MISS LORRY 242

Your first chance to buy Brahckle embryos at Auction in Australia. They are by foundation females Waratah H7 and Waratah H8. These females are selling as lots 72 & 73. We are able to offer you these embryos because of our need to expand our Brahckle breeding program. They are joined to some new and leading Speckle Park sires. We believe there is a big future for Brahckle cattle in Australia. This is your chance to get in on the ground floor.

Purchaser: \$.....

LOT 98 4 EMBRYOS: WARATAH H8 X JSF CONTINENTAL 9C



CODIAK CALVIN 58Y
SIRE: JSF CONTINENTAL 9C
MONNERY RIVER 7X

WARATAH ELLIS E28
DAM: WARATAH H8
NESLO 2375 MX LILL

Your second chance to buy Brahckle embryos at Auction in Australia. They are by foundation females Waratah H7 and Waratah H8. These females are selling as lots 72 & 73. We are able to offer you these embryos because of our need to expand our Brahckle breeding program. They are joined to some new and leading Speckle Park sires. We believe there is a big future for Brahckle cattle in Australia. This is your chance to get in on the ground floor.

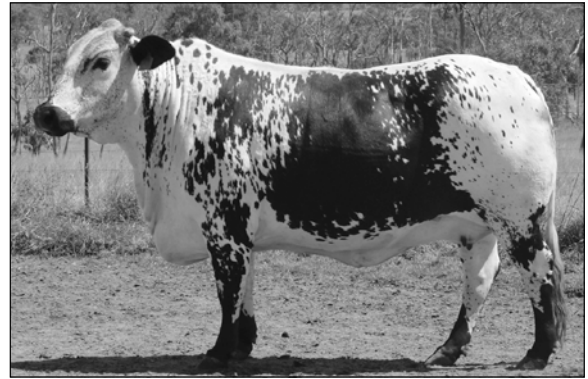
Purchaser: \$.....



LOT 99 4 EMBRYOS: WARATAH H7 X JSF CONTINENTAL 9C



YOGI GOES REDNECK 7Y
SIRE: JSF TRADE SECRET 11A
MONNERY RIVER7W



A&W 15R
DAM: WARATAH H7
DONNA LEIGH PARK MISS LORRY 242

Your third chance to buy Brahckle embryos at Auction in Australia. They are by foundation females Waratah H7 and Waratah H8. These females are selling as lots 72 & 73. We are able to offer you these embryos because of our need to expand our Brahckle breeding program. They are joined to some new and leading Speckle Park sires. We believe there is a big future for Brahckle cattle in Australia. This is your chance to get in on the ground floor.

Purchaser: \$.....

LOT 100 4 EMBRYOS: WARATAH H7 X WARATAH J30



PHOTO AT 9 MONTHS OF AGE

CHAMPAGNE PRETENDER D1
SIRE: WARATAH J30
WARATAH EMBER E26



A&W 15R
DAM: WARATAH H7
DONNA LEIGH PARK MISS LORRY 242

Your last chance to buy Brahckle embryos at Auction in Australia. They are by foundation females Waratah H7 and Waratah H8. These females are selling as lots 72 & 73. We are able to offer you these embryos because of our need to expand our Brahckle breeding program. They are joined to some new and leading Speckle Park sires. We believe there is a big future for Brahckle cattle in Australia. This is your chance to get in on the ground floor.

Purchaser: \$.....



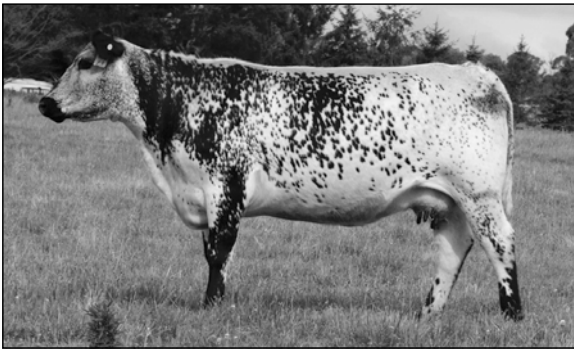
LOT 101 1 FLUSH: PICK OF WARATAH DONOR COWS TO FLUSH



WARATAH E27



WARATAH J155



WARATAH J187



WARATAH K144

Notes: Waratah is offering you the chance to flush a cow from the Waratah donor paddock. The successful buyer will be able to pick one female from the list below. Waratah guarantees a minimum of 5 embryos to a maximum of 15 embryos. Any embryos over 15 will be split between the buyer and Waratah Speckle Park. Flushing and embryo transport costs are the responsibility of the successful buyer. Waratah cows average 9 embryos per flush. If you want to jump the queue in the Speckle Park business this is an opportunity not to be missed. Females are currently at Global Reproductive Solutions and ready to flush.

Females to pick from are Waratah E27, Waratah J194, Waratah J187, Waratah K144, Waratah L511, Waratah K107, Waratah J155, Waratah K145, Waratah J107 and Waratah F15.

If you want to jump the queue in the Speckle Park business this is an opportunity not to be missed!

Purchaser: \$.....



PONDEROSA CHUCK 24C

Born: 10/04/2015

KTM 24C

Colour: Speckle

AUSTRALIA & NEW ZEALAND

LEGACY UPPERCUT 74U
SIRE: LEGACY LEFT JAB 35X
 DEB-RAY 12K
 HWY 4 SHOW STOPPER 2S
DAM: U LITTLE REDNECK OF MX 12U
 RIVER HILL SADYE 12S

Notes: First ever public offering of Ponderosa Chuck 24C semen in Australia. This semen is qualified for use in Australia and New Zealand. This is a great opportunity to purchase semen with an outcross pedigree in Australia. I picked him out of the paddock as a yearling in Canada, as the stand out bull from the Ponderosa breeding program. His dam was also impressive, when I saw her she was raising another good calf.



LOT 102 10 STRAWS - PONDEROSA CHUCK 24C

Purchaser: \$.....

LOT 103 10 STRAWS - PONDEROSA CHUCK 24C

Purchaser: \$.....

CN ZPOTZ ZAZU 2Z

Born: 20/02/2012

CNZ 2Z

Colour: White

LEGACY ROUGHRIDER 52R
SIRE: LEGACY TURNPIKE CRUISER 27T
 LEGACY ROMA 60R
 PRAIRIE HILL MASTERPLAN II 87L
DAM: PRAIRIE HILL NIRVANA 4N
 PRAIRIE HILL 1H

Notes: Second time offering of Zazu semen for purebred use in Australia. We are impressed with the extra length he puts into his offspring and we will be using him again in future breeding programs. Zazu is a very structurely correct bull who first caught our attention in the Canadian Source Speckle Park Sale in 2013. Laiton while in Canada in 2016 was able to view Zazu as a mature bull and he did not dissappoint. Zazu is a free moving thick soft bull.



LOT 104 10 STRAWS - CN ZPOTZ ZAZU 2Z

Purchaser: \$.....

LOT 105 10 STRAWS - CN ZPOTZ ZAZU 2Z

Purchaser: \$.....



WARATAH HUME H14

Born: 28/06/2012

LST H14

Colour: Speckle

AUSTRALIA ONLY

BELMORAL'S SPECIAL 99H
SIRE: A & W 15R
 TRIPLE A GEM 15G
 STAR BANK LACERTA 68L
DAM: 68L PRARIE HILL AMY'S GIRL F8
 PRAIRIE HILL AMY'S GIRL 21K

Notes: Waratah Hume was the Royal Brisbane Champion in 2013. Hume is a bull with real sire character. He is thick and powerful with a big hindquarter. Hume's full sister was the Grand Champion at Beef Australia in 2015 and Hume was Reserve Senior Champion. He was also the sire of the top selling bull in our 2016 sale. Hume's sire A&W 15R semen sold in our sale last year for \$850 per straw. This is your opportunity to purchase semen from a sale topping breeder.



LOT 106 10 STRAWS - WARATAH HUME H14

Purchaser: \$.....

LOT 107 10 STRAWS - WARATAH HUME H14

Purchaser: \$.....

PAR ACE IN A HOLE 66A

Born: 24/01/2013

PAR 66A

Colour: Speckle

CALAMASUE 10R
SIRE: P.A.R. TOUCH DOWN 600T
 PRETTY LADY OF P.A.R. 600P
 P.A.R. PAPA RAZZI 6P
DAM: P.A.R. WONDER BRA 66W
 ROB 'N SON'S FARMS 6P

Notes: Ace In A Hole won Reserve Champion Bull Calf at Canadian Western Agribition. He also won King of the Ring Champion at the 2013 Lloydminster Stockade Roundup. Laiton also had the opportunity to view Ace In A Hole in 2016 as a mature bull. Ace In A Hole is a good heifer bull and offers new outcross genetics in Australia.



LOT 108 5 STRAWS - PAR ACE IN A HOLE 66A

Purchaser: \$.....



Spot on Genetics
FEMALE SALE

Semen Packages

YOGI GOES RED NECK 7Y

Born: 19/02/2011

SDS 7Y

Colour: Speckle

AUSTRALIA ONLY

PAR MOO FASSA 03M
SIRE: RED NECK WILD WILLY 2W
 PRAIRIE HILL NAUGHTY GIRL 90N
 ASPEN ACRES HORATIO 6H
DAM: ASPEN ACRES LINDA LOU 10L
 JOY OF PAR 10J

Notes: I had the opportunity to see Yogi Goes Redneck when I was in Canada and I was impressed by his calves. His Son JSF Trade Secret has also proven himself with some stand out progeny here at Waratah. In my opinion Yogi is one of the best heifer bulls we have seen in the breed to date.



LOT 109 10 STRAWS - YOGI GOES RED NECK 7Y

Purchaser: \$.....

JSF TRADE SECRET 11A

Born: 9/03/2013

JSF 11A

Colour: White

REDNECK WILD WILLY 2W
SIRE: YOGI GOES REDNECK 7Y
 ASPEN ACRES LINDA LOU 10L
 RIVER HILL SHOW BIZ 93S
DAM: MONNERY RIVER 7W
 MONNERY RIVER 7P

Notes: Trade Secret is a bull who has proven himself here at Waratah with some standout progeny. To see how well he breeds take a look at his son lot 54 or his daughters lots 27 to 30. He is an easy doing sire with good muscle tone. As a white bull he will colour mark the majority of his offspring.



LOT 110 10 STRAWS - JSF TRADE SECRET 11A

Purchaser: \$.....

LOT 111 10 STRAWS - JSF TRADE SECRET 11A

Purchaser: \$.....



HEARTRIDGE ARIES 01W

Born: 17/05/2009

KAM 01W

Colour: Speckle

PAR KING PIN 1K
SIRE: PAR SHARP SHOOTER 60S
 LUCKY ANGEL OF PAR 6L
 PAR NAPOLEON 10N
DAM: PONDEROSA TIFFANY 06T
 ASPEN ACRES LUCKY LADY 05L

Notes: Aries was selected for his length and depth of hind quarter. He is a proven breeder to improve carcass quality. The Champion Steer of the Calgary Stampede Beef Carcass Competition in 2011 exhibited bloodlines from Aries' sire and dam.



LOT 112 10 STRAWS - HEARTRIDGE ARIES 01W

Purchaser: \$

P.A.R PAPA RAZZI 6P

Born: 26/02/2004

PAR 6P

Colour: Speckle

PAR KING PIN 1K
SIRE: PAR MR. POWERSTROKE 4M
 ASPEN ACRES KAABA KIN 4K
 PAR KISMIT 10K
DAM: MONALISA OF PAR 6M
 DOUBLE RR ANGEL 86'88

Notes: Papa Razzi is a balanced bull offering thickness and carcass quality. He was named Grand Champion Bull at the Canadian Western Agribition in 2005 and in 2004 was Grand Champion Bull at Farmfair.



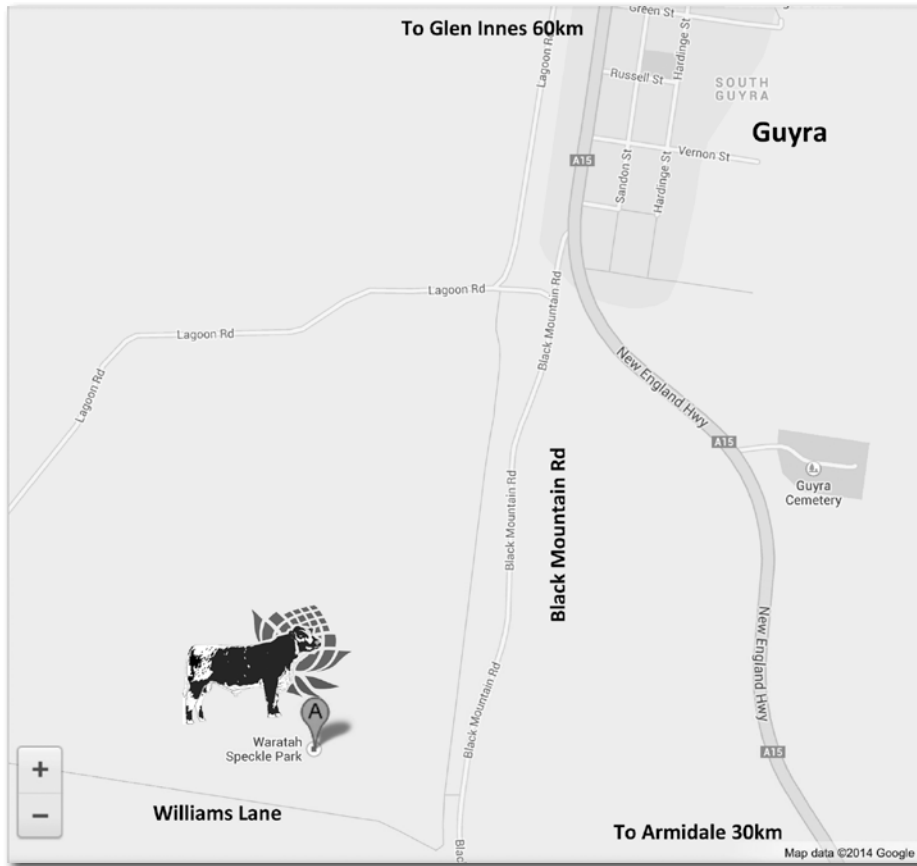
LOT 113 10 STRAWS - P.A.R PAPA RAZZI 6P

Purchaser: \$



Spot on Genetics FEMALE SALE

Directions



Thank you

We would like to thank you for joining us here today at Waratah or at home via live broadcast for our female sale. We hope the draft of females, bulls and genetics on offer today enabled you to find the right animal/s to enhance and strengthen your cattle breeding programs. We wish you all the best with your purchases and look forward to seeing you again in the future.

Regards,
The Waratah Team

Waratah Speckle Park's Sale Averages

Animal	Top Price	Average
Bulls		
Brahckles		
Stud Cows		
Stud Heifers		
Commercial F1 Heifers		
Commercial PTIC		
Embryos		
Semen Packages		



Spot on Genetics
FEMALE SALE

Notes



Speckle Park International Inc

ABRI, University of New England, Armidale NSW 2351
Phone 02 6773 3056 Fax 02 6772 5376
Email: specklepark@abri.une.edu.au



Transfer Application

Purchaser Name: _____ Address: _____

Signature: _____ Transfer date: _____

	Animal Ident	Sex M/F	Sale Price (voluntary)	Joining Sire IDENT	Service Type NAT/AI	Joining Date FROM	Joining Date TO
1							
2							
3							
4							
5							
6							
7							

I authorise the transfer of the above animals for recording in the database of Speckle Park International Inc.

Signed: _____ Date: _____ Member Prefix: _____



WARATAH SPECKLE PARK

FEMALE SALE 2018

Dear Buyer,
Congratulations on your purchase. Please complete the form below and submit to the settling office immediately after the sale.
With thanks, Waratah Speckle Park

PURCHASER DETAILS

PURCHASER NAME:

TRADING NAME:

ADDRESS:
.....
.....

PHONE NUMBER: MOBILE NUMBER:

EMAIL ADDRESS:

PROPERTY IDENTIFICATION CODE (PIC):

BILL TO:
.....

LOTS PURCHASED:

INSURANCE YES / NO

PEDIGREE TRANSFER REQUIRED YES / NO



Good people to know.

DELIVERY ARRANGEMENTS:
.....
.....

BUYERS SIGNATURE:



WARATAH BULL SALE

Monday, 9 July 2018

50 Speckle Park Bulls
20 Speckle Park Heifers





Opportunity. Discover. Embrace.

Speckle Park numbers have grown exponentially over the past several years and Waratah is thrilled to be able to provide clients with an incredible opportunity to source top Waratah female breeders. We encourage you to take the time to discover what we have to offer you at our upcoming sale. There is no time like today to embrace Speckle Park cattle as they continue to prosper across Australia and around the world.