



12 AUGUST 2019

W a r a t a h S p e c k l e P a r k



6TH ANNUAL SALE

out & about on the farm



opportunity. discover. embrace.



CONTACT US

WARATAH SPECKLE PARK

P.O. Box 115, 2365

GUYRA NSW

admin@waratahspecklepark.com

www.waratahspecklepark.com

STUD PRINCIPLES

LAITON TURNHAM

0420 548 299

ERIC TURNHAM

(02) 6779 1069

AUCTIONEER

BRIAN LESLIE

0418 365 934

SELLING AGENT

RAY WHITE LIVESTOCK

Blake O'Reilly

0448 213 668

(02) 6779 2033

ONLINE BIDDING

ELITE LIVESTOCK AUCTIONS

1300 15 31 35

FEATURING LOTS

25 Speckle Park Bulls

10 Speckle Park Yearling Bulls

30 Speckle Park Heifers

2 Embryo Packages

6 Semen Packages



WELCOME

At Waratah Speckle Park it is very much a family run beef operation, with Helen running the office and all of the paperwork that is involved in a stud Speckle Park business and Kayla creatively working behind the scenes on the website, facebook page, photography, sale catalogue and advertising. Eric and Laiton do all the other mundane stuff like keeping all of the cattle fed and bred through this horrid dry weather!

This season has been as tough as any that we've seen and these Speckle Park cattle continue to amaze us with their ability to get in calf and to easily make kg's of beef. As the drought seems to be taking quite a tight grip we have been doing our very best to maintain and improve the cattle we are presenting for sale this year. Alongside the normal feeding that comes with dry conditions, we have also had our share of water problems having had to cart water for the first time since drought in the early 90's.

Even though Laiton was unable to go to Canada this year, he still managed to secure a new bull for our bull battery, Moovin Zpotz Dickey 43D. When Laiton first saw Dickey in 2018 he was out in the paddock, in his working clothes, in two foot of snow and he looked impressive! Dickey had been out and had done his job and proved himself in very trying conditions. This bull has a pedigree that is another complete outcross for Waratah and the Australian Speckle Park herd. Waratah will be using Dickey heavily in our AI programs this year.

While the weather has proven difficult, this sale will be one of the most interesting for us at Waratah as we hope to see all of our hard work pay off. We have bulls from completely different proven sire lines of Legacy Bone Crusher 35B and CN Zpotz Zazu 2Z, being picked out already by a few of the astute beef producers that have been and seen the team so far this year.

Last year Laiton AI'd hundreds of cows in our ET program and AI Speckle Park programs. With over 200 embryo's transferred by Udo Mahne, we have had a very busy genetics program! We run fixed time AI programs at Waratah. If females don't conceive they are culled, thus giving us a much more fertile herd for AI breeding! We believe it is more profitable to have a live calf born every year, than the costs associated with large calves and the infertility that can follow with Dystocia.

Over the past decade we have placed a very high priority on cow fertility and low birth weights at Waratah. We feel the proof is in the pudding, in our first year of Breedplan we have a large number of this year's sale bulls ranking high for Gestation Length, Birth Weight and Scrotal Size.

Our carcass data this year is also very impressive with 16 out of 27 two year old bulls scanning 6 or higher for IMF and 5 of these attained higher than a 7.

We stand by the quality of bull we produce at Waratah and have had a lot of successes using home bred bulls in the past that this year, we will be collecting semen from several bulls to use at Waratah over the coming season.

We believe the quality of the bulls in this year's sale is extremely high and we encourage all serious Speckle Park seed stock producers to take a look, as there are multiple potential stud sires in this year's offering.

Once again, this year we have a diverse range of Waratah bred stud heifers including some of our first heifers to be sold by CN Zpotz Zazu 2Z, Codiak Spencer 52B and JSF Continental 9C as well as our rock solid sires Minnamurra Lancelot, Yogi Goes Redneck, JSF Trade Secret 11A and our great old cow maker Codiak Amigo 65Y also within the mix.

Due to the request of many people wanting to buy yearling bulls and grow them out to acclimatise to their environment we will be offering a small number of yearling bulls for sale this year.

We at Waratah are very proud of the cattle here today and look forward to seeing the benefits of these cattle passed onto their new owners.

Thanks,
Eric, Helen, Laiton & Kayla Turnham





Video Sale

This sale will be conducted using video, no animals will go through the sale ring.

Please ensure you arrive early sale morning to view the animals in their display pens. Animals can also be viewed in their display pens as the sale is conducted as an agent will be present outside to take your bids in real time.

Videos will be available online a week before sale day at www.elitelivestockauctions.com.au or via the Waratah Facebook page.

Inspections

Cattle will be on display from 9.30am on sale day.

We welcome your inspection of the cattle prior to sale day by appointment only.

Refreshments

Lunch and refreshments will be provided on the day by the Bald Blair Public School P & C, with all proceeds going to the school.

Travel Arrangements

The sale will be conducted at 'Waratah', Guyra, situated 38km north of Armidale and 60km south of Glen Innes.

By air, Armidale is accessible via Sydney and Brisbane. The flight is approximately 1 hour. 'Waratah' is 40 minutes drive from the Armidale (NSW) Airport. Car hire is available from the Airport.

By road, Guyra is centrally located approximately 6 hours between Sydney and Brisbane on the New England Highway.

Accommodation

Motels are available in Guyra, Armidale and Glen Innes.

Elite Livestock Auctions

If unable to attend the sale on the day, clients are able to live bid online at www.elitelivestockauctions.com.au.

Please refer to the 'How to Register with Elite Livestock Auctions' page in this sale catalogue.

It is highly recommended to register with Elite Livestock prior to sale day if using this facility. Please direct any questions or concerns to Elite Livestock Auctions by calling 1300 15 31 35.

Outside Agents Rebate

A rebate of 1% is available to outside agents introducing buyers one business day (Friday, 9th of August by 5pm), prior to the sale in writing to Ray White Rural Guyra – fax: (02) 6779 2034 or email: rural.armidale.nsw@raywhite.com and settle on the client's behalf within 7 days after the sale.

A 2% rebate is available to outside agents who supply a letter of introduction as above and attend the sale with clients. Agents are required to settle on the client's behalf within 7 days after the sale.

Herd Health Status

Animals in the sale have met all necessary health requirements.

Cattle are bred on a BJD, J-BAS 7 property and have been inspected by Embryo-Life Veterinarian Dr Udo Mahne (BVSc).

Individual breeding/health certificates will be provided for all animals. These may be required by your preferred insurer.

Waratah Speckle Park is LPA and MSA accredited.

Health Treatments

P Animals received Beachport white cap, B12, AD & E, 7 in 1, Ivermectin pour in April 2019. They were tick vaccinated on 31.5.2019.

N Animals received 7 in 1, Vibro, Beachport white cap liquid minerals and Ivermectin pour on 15.3.2019. They received their tick vaccine in 2018.

All animals in this year's sale have been ear notch tested for Pesti virus and are negative.

Sale Day Safety

Your safety on sale day is important to us.

Our cattle are quite and well-tempered however animal behaviour can be unpredictable at times. Animals can react differently when exposed to different situations for example large crowds of people and noise.

If you wish to enter inspection yards please be mindful of the animals. Please do not enter sale pens with small children or if you have limited mobility.

Supplementary sheet

Updated weights, scans and pregnancy results will



be provided on sale day along with any other new or additional information.

DNA Testing

All registered animals in this year's sale have a 50K SNP profile. All 'P' animals are parent verified and pedigree assured. The majority of 'N' animals are also parent verified unless specified.

Understanding the Genetic Profile

Coat Colour

ED/ED – homozygous dominant black
ED/e – dominant black/recessive red

Poll/Horn Testing

PcPc – homozygous polled
HPc – carries one copy of the horn gene (scurs)

Myostatin

F – Free of the nt821 myostatin gene
C – Carrier of one copy of the nt821 myostatin gene

Transport

All cattle are to be transported from 'Waratah' as soon as possible due to seasonal conditions, except for overseas buyers. Arrangements for overseas buyers need to be made with the vendor prior to sale day. No pickups available on Saturdays.

Peter Kratz Cattle Transport will be in attendance on sale day. Peter can be contacted on 0412667320 or transport arrangements can be made with selling agent Blake O'Reilly on 0448 213 668.

Mobile Coverage

There is good mobile phone coverage at 'Waratah'. Please make arrangements with agents for phone bidding.

Semen Rights

Waratah Speckle Park retain semen rights in some of their sale bulls each year.

These bulls will have the Waratah logo on their picture and will be outlined under the lot in the information section.

Breeding Guarantees

Waratah Speckle Park have taken the utmost care to ensure all sale animals at time of sale are sound breeding animals.

All bulls are guaranteed breeders and have been semen morphology tested by John Cooper of Just Genes AB

services QLD. Structural assessment is by our vet Dr Udo Mahne.

All females are guaranteed breeders and are either pregnant on sale day, have bred calves or are young heifers that have had their reproductive systems checked by our Vet Dr. Udo Mahne and come with a breeding health certificate.

Semen test and breeding certificates will be provided to all buyers. It is then the buyer's responsibility to insure sale animals for infertility, injury or mishap.

Buyers need to be aware that breeding livestock comes with risk and due to the nature of livestock production being unpredictable, Waratah Speckle Park do not take any responsibility for live animals after the fall of the hammer and ask that in the unlikely event of infertility, injury or mishap that you contact your preferred insurer.

No insurance equals no guarantee; so please remember to take out insurance at the fall of the hammer on sale day.

Insurance

We recommend buyers organise insurance with their Agent or one of the two insurance representatives present on sale day. David de Ferranti from WFI; 0412 328 911 or Allan Cowan from Achmea Insurance; 0417 156 837.

Advice Disclaimer

At Waratah Speckle Park we are willing to provide assistance to those seeking guidance and our opinion on cattle. However, the final decision is that of the purchaser. Waratah Speckle Park will not be responsible for the final results and performance.

Sale Catalogue Disclaimer

The vendors have taken care to provide information that is correct to the best of their knowledge at the time of publication. However, neither the vendors nor the selling agent make no other representations about the accuracy, reliability or completeness of any information provided in this catalogue and do not assume any responsibility for the use or interpretation of the information included in this catalogue. It is advised that you seek independent verification of any information contained in this catalogue before relying on such information. Announcements made on sale day supersede information in this catalogue.



The Waratah Way

The purchase of a Waratah bull is a long-term investment, so they should be treated with care and in a gentle manner. Always handle them quietly and at a walking pace. By doing so, you will earn their respect and maintain their good temperament. Our bulls are vaccinated and drenched prior to sale and can serve approximately forty cows as two year olds and slightly more as older bulls. They are handled with dogs and contained using electric fencing, so they will treat both with respect. A Waratah Bull provides excellent opportunities in genetics and can improve the value of your herd into the future.

Transportation & Handling

At the fall of the hammer at auction you take possession of your purchase, so from that moment, it is important to treat your new investment with care.

A bull leaving Waratah should be unloaded at your yards, with house cows, steers or herd cows as companions. Always separate bulls from different origins into different yards. Remember your bull is leaving the security of a mob and will arrive in unfamiliar territory at your property.

Vaccinations/Treatment

Always consult with your veterinarian and establish a health treatment plan to be given on arrival at your property. It is important to vaccinate against vibriosis, as it is a common cause of infertility and is transmitted by infected bulls. Fortunately, this disease is easily prevented by vaccination prior to joining each year. A drench is important when he is finished serving the cows. You may also treat bulls yearly with other injections that are appropriate for your local area/state.

Behaviour & Temperament

The temperament of any bull is best demonstrated by their behaviour in the yard before auctioning begins. During and after action and/or on arrival at your property their behaviour may change due to changes in environment and increased stress. Bulls may display a change in temperament, becoming excited and/or agitated. A number of stimuli may cause this change including unusual and loud noises, new people, crowds, a new environment, new feed, loss of mates, a new herd and different handling methods. This can be very upsetting to animals. It is best to allow bulls' time to adjust to their new environment. You can assist this by providing adequate feed, water, low noise levels and a mate i.e. house cow. Once settled into their new environment bulls' temperament will return to normal.

Young Bulls (12-18 months)

It is possible for a young bull to settle in with older bulls, however the paddock needs to be large enough for the young one to keep away from the others and to find adequate feed. As the new bull, he will get the last of the feed available because of the pecking order. Young bulls are still growing and need enough feed to maintain their growth pattern, which may require supplement feed in the first breeding season. Having enough paddock area also helps them to be able to settle the cows quickly and efficiently. We recommend mating loads of only 25-30 females. Never overwork young bulls. As they are not fully developed, they will be leaner and carry less body fat reserves. If their condition score declines to below 3, sperm production may be compromised. Their condition is essential for good fertility. It is also important to note that the joining season may need restricting to 6-8 weeks if conditions are extensive and where good quality feed is unavailable.

Mating

Cows should be seen cycling in groups with male calves hanging around before mating. If using several young bulls, they should be run together for a few weeks prior to joining. This should reduce problems later on as they will have already established a hierarchy. Also, young bulls that have been recently purchased should not be joined together with older bulls.

Always observe your bull when he is working as accidents can happen. Bulls can scratch their penis on dry manure on the cows backside which can lead to infection with large sores forming. If treated quickly this can be remedied. If a bull is not serving, he needs to be replaced, but remember, if the cow has been served before the observer has arrived, the bull may not repeat the performance. Remember any day he is not working can cost you money.

Nutrition

When your new bull arrives at your property, provide adequate hay and water and leave him alone until the next day so he has a chance to settle. Before you join your bull with a herd, the cows should be on a rising plane of nutrition to ensure they have the greatest possible chance of cycling. When the season is finished, the bull should be put away with quality, adequate feed, as this will help prevent fighting.

Please remember: Always respect your bull and he will respect you.



What is Breedplan/EBVs?

An animal's breeding value can be defined as its genetic merit for each trait. While it is not possible to determine an animal's true breeding value, it is possible to estimate it. These estimates of an animal's true breeding value are called EBVs.

Gestation Length (days)

Gestation Length EBVs provide an estimate of genetic differences between animals in Gestation Length. Lower or more negative Gestation Length EBVs are considered to be more favourable as a bull with a Gestation Length EBV of -2 days would be expected to produce calves that are born earlier, and more easily, than a bull with a Gestation Length EBV of +2 days.

Birth Weight (kg)

Small, or moderate, Birth Weight EBVs are more favourable as a bull with a BW of +2kg would be expected to produce lighter calves at birth than a bull with a BW of +6kg, with a lower risk of a difficult birth. However, whilst low BW EBVs are favoured for calving ease they are also generally associated with lower overall growth potential. Therefore, birth weight and growth EBVs need to be carefully balanced. Animals can have both moderate birth weight EBVs and above average EBVs for later growth.

Growth EBV's (kg)

Three growth EBVs are currently calculated by Breedplan; 200 Day Growth, 400 Day Weight & 600 Day weight. These EBVs are the best prediction of the animal's ability to grow to weaning (200 day), yearling (400 day) and later ages (600 day). 200 Day Growth EBVs are important to vealer breeders, 400 Day Weight EBVs for yearling breeders and 600 Day Weight EBVs for breeders of heavy steers.

Mature Cow Weight (kg)

Mature Cow Weight EBVs are estimates of the genetic difference between cows in live weight at 5 years of age. Animals with a higher, more positive Mature Cow Weight EBVs would be expected to produce progeny with a higher mature weight than animals with lower Mature Cow Weight EBVs. What level of Mature Cow Weight EBV is optimal will depend on the individual herd and its breeding objective. Breeders looking to decrease the mature weight of their cows may look for lower Mature Cow Weight EBVs whereas breeders looking to increase their returns from the sale of cull cows may look for higher Mature Cow Weight EBVs.

Milk (kg)

Milk EBVs provide an estimate of the maternal contribution of a dam to the 200 day weight of her calf. In the case of sires, this estimates the maternal contribution that his daughters will make to the 200 day weight of their progeny.

Larger, more positive, 200 Day Milk EBVs are generally more favourable, depending on the environment. For example, a bull with a 200 Day Milk EBV of +15 kg would be expected to sire daughters with higher milk production than a bull with 200 Day Milk EBV of +5 kg. This higher milk production potential should be reflected through higher weaning weights among the daughter's calves.

Scrotal Size (cm)

Scrotal Size EBVs provide an estimate of the genetic difference between animals in scrotal circumference at 400 days of age. Larger, more positive, Scrotal Size EBVs are generally more favourable. For example, a bull with a Scrotal Size EBV of +4 cm would be expected to produce sons with larger testicles at yearling age and daughters that reach puberty earlier than the progeny of a bull with a Scrotal Size EBV of -4 cm. Scrotal Size is the most important EBV to look at when determining the fertility of individual animals.

Carcase Weight (kg)

Larger, more positive, Carcase Weight EBVs are generally more favourable. For example an animal with a Carcase Weight EBV of +40kg would be expected to produce progeny with heavier slaughtered carcasses at 650 days of age than an animal with a Carcase Weight EBV of +30 kg.

Eye Muscle Area (sq cm)

Larger, more positive, EMA EBVs are generally more favourable as a bull with an EMA EBV of +4 cm² would be expected to produce steer progeny with a greater degree of muscle expression than a bull with an EMA EBV of +1 cm², relative to carcase weight.

Rib Fat / Rump P8 Fat (mm)

More positive or more negative Rib/P8 Fat EBVs may be more favourable, depending on your breeding goals relating to the finishing ability of your animals. A bull with a Rib/P8 Fat EBV of -0.4 mm would be expected to produce leaner calves than a bull with a Rib/P8 Fat EBV of +0.4mm, relative to carcase weight.

Retail Beef Yield (RBY)

Larger, more positive, RBY EBVs are generally more favourable. Animals with a higher EBVs are expected to produce progeny that yield higher percentages than animals with lower EBVs.

Intramuscular Fat (%)

Larger, more positive IMF EBVs are generally more favourable. An IMF of +0.8% would be expected to produce progeny that would express more marbling than an animal with an IMF of +0.1%.



JULY 2019 SPECKLE PARK BREEDPLAN REFERENCE TABLES

15%

In the catalogue we have highlighted EBVs that are ranked in the top 15% of the breed or better.

Average EBVs of all 2017 drop Speckle Park Calves analysed in the July 2019 Speckle Park Group Breedplan

	Gestation Length (days)	Birth Wt (kg)	200 Day Wt (kg)	400 Day Wt (kg)	600 Day Wt (kg)	Mat Cow Wt (kg)	Milk (kg)	Scrotal Size (cm)	Carcase Wt (kg)	Eye Muscle Area (sq cm)	Rib Fat (mm)	Rump Fat (mm)	Retail Beef Yield (%)	IMF (%)
Breed Avg.	-0.2	+1.3	+14	+20	+26	+25	+3	+0.2	+16	+0.7	+0.1	+0.0	+0.1	+0.0

Use these to compare individual animals with the current genetic level of the Speckle Park breed.

Percentile Bands

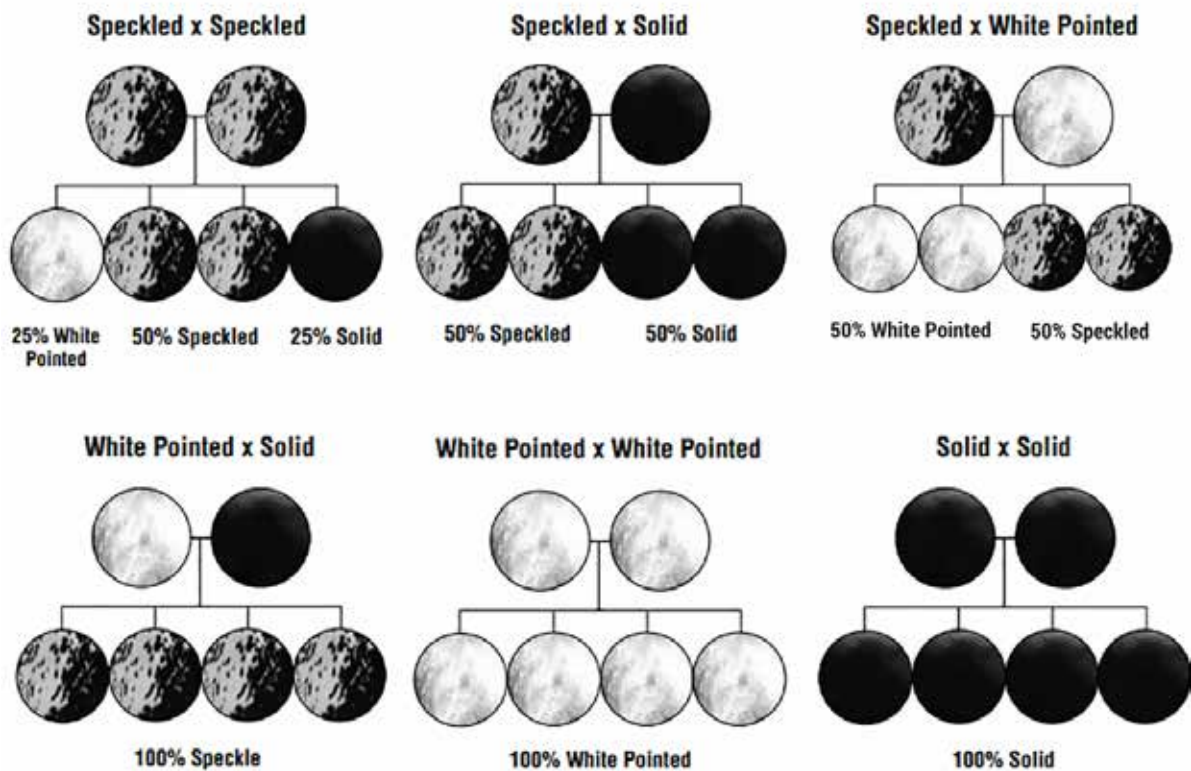
Percentile Band	Gestation Length (days)	Birth Wt (kg)	200 Day Wt (kg)	400 Day Wt (kg)	600 Day Wt (kg)	Mat Cow Wt (kg)	Milk (kg)	Scrotal Size (cm)	Carcase Wt (kg)	Eye Muscle Area (sq cm)	Rib Fat (mm)	Rump Fat (mm)	Retail Beef Yield (%)	IMF (%)
Top Value	-3.1	-2.4	+38	+51	+65	+66	+9	+1.5	+46	+2.5	+3.4	+4.7	+2.4	+1.3
Top 1%	-2.5	-1.3	+30	+41	+53	+52	+8	+1.1	+34	+1.8	+2.0	+2.7	+1.6	+0.8
Top 5%	-1.9	-0.5	+24	+35	+44	+43	+7	+0.7	+29	+1.5	+1.1	+1.5	+1.1	+0.5
Top 10%	-1.2	-0.2	+21	+31	+39	+38	+6	+0.6	+25	+1.4	+0.7	+0.9	+0.8	+0.4
Top 15%	-0.9	+0.2	+19	+28	+36	+35	+5	+0.5	+23	+1.2	+0.6	+0.7	+0.6	+0.3
Top 20%	-0.7	+0.4	+18	+27	+34	+33	+5	+0.5	+22	+1.1	+0.5	+0.6	+0.5	+0.3
Top 25%	-0.6	+0.6	+17	+25	+32	+31	+4	+0.4	+20	+1.0	+0.4	+0.5	+0.5	+0.2
Top 30%	-0.5	+0.7	+16	+24	+31	+30	+4	+0.4	+19	+1.0	+0.3	+0.4	+0.4	+0.2
Top 35%	-0.4	+0.9	+15	+23	+29	+29	+4	+0.3	+18	+0.9	+0.2	+0.3	+0.3	+0.1
Top 40%	-0.3	+1.0	+15	+22	+28	+27	+4	+0.3	+18	+0.8	+0.2	+0.2	+0.2	+0.1
Top 45%	-0.2	+1.2	+14	+21	+27	+26	+3	+0.3	+17	+0.8	+0.1	+0.1	+0.2	+0.1
Top 50%	-0.1	+1.3	+13	+20	+25	+25	+3	+0.2	+16	+0.7	+0.1	+0.0	+0.1	+0.0
Top 55%	+0.0	+1.4	+13	+19	+24	+23	+3	+0.2	+15	+0.7	+0.0	-0.1	+0.1	+0.0
Top 60%	+0.1	+1.5	+12	+18	+23	+22	+2	+0.1	+14	+0.6	-0.1	-0.2	+0.0	+0.0
Top 65%	+0.2	+1.6	+11	+17	+22	+21	+2	+0.1	+14	+0.5	-0.2	-0.3	-0.1	-0.1
Top 70%	+0.2	+1.8	+11	+16	+20	+20	+2	+0.0	+13	+0.5	-0.2	-0.3	-0.1	-0.1
Top 75%	+0.4	+2.0	+10	+15	+19	+18	+2	+0.0	+12	+0.4	-0.3	-0.4	-0.2	-0.1
Top 80%	+0.5	+2.2	+9	+14	+17	+16	+1	-0.1	+11	+0.3	-0.3	-0.5	-0.3	-0.2
Top 85%	+0.6	+2.4	+8	+12	+15	+14	+1	-0.2	+10	+0.2	-0.5	-0.7	-0.4	-0.2
Top 90%	+0.7	+2.8	+7	+11	+12	+12	+0	-0.3	+8	+0.1	-0.6	-0.9	-0.6	-0.3
Top 95%	+1.0	+3.2	+5	+8	+9	+9	+0	-0.5	+7	+0.0	-1.0	-1.5	-0.8	-0.3
Top 99%	+1.5	+4.5	+2	+4	+3	+1	-3	-0.8	+1	-0.4	-1.4	-1.9	-1.4	-0.6
Low Value	+3.4	+5.6	-3	-5	-9	-10	-4	-2.3	-9	-1.0	-2.0	-2.7	-2.6	-1.3



It is important to understand how Speckle Park colour patterns work in order to achieve your breeding goals. While some breeders are mostly interested in producing speckled cattle others want to inject Speckle Parks' notorious hybrid vigour while retaining predominantly black herds. For example, when a solid black Speckle Park bull is joined with 100% purebred Angus cows the resulting calves will be predominately solid black. Another example is when Angus cows are joined to a white Speckle Park bull the resulting calves will be predominately speckled.

Speckle Park cattle have four distinct colour patterns; speckled, leopard, white pointed and solid black. The speckle and leopard colour pattern are genetically the same except for varying degrees of spotting. Some Speckle Park cattle can produce red colour patterns if both parents carry the recessive red gene.

Please remember when dealing with nature individual results will vary. This is to be used as a guide only.



ARTIFICIAL BREEDERS

DWIGHT & NOELA WYATT

(02) 6629 3177 - 0418 628 157

e: wyattab@bigpond.net.au

GOOLMANGAR NSW 2480

FOR ALL YOUR ARTIFICIAL INSEMINATION NEEDS

SEMEN, LIQUID NITROGEN & AI HARDWARE

We can assist you with embryo & semen transport logistics.



“Bid online from the
comfort of your home
or paddock”



ELITE LIVESTOCK AUCTIONS

UNABLE TO MAKE
SALE DAY?

Waratah is excited to partner with Elite Livestock Auctions to enable clients to live bid at home in real-time. Elite Livestock Auctions is Australia's newest innovative auction company who utilise the latest in live internet bidding technology to

**BID ONLINE AT HOME VIA LIVE
INTERNET BROADCAST**

allow you to bid online from the comfort of your home or paddock. Buyers can view the auction and bid using a computer, iPad, iPhone or Android device. To register and bid follow the step by step guide provided. Once you have registered, be sure to "REQUEST TO BID" on our auction sale. You can enter our auction by simply clicking 'Enter Auction' for registered buyers or 'Watch Only' should you only wish to view our sale. International buyers can register with Elite Livestock Auctions. Please call or email to register before sale day.



HOW TO REGISTER with ELITE LIVESTOCK AUCTIONS

Welcome to the new age of selling livestock in Australia and "Happy Bidding"



- 1  Simply go to **www.elitelivestockauctions.com.au** using your desktop, laptop, iPad, iPhone or android device
- 2  Click on the "Sign Up" page / link
- 3  Create a bidding profile using the bidder registration page.
(You can either register as a livestock agent, company or private buyer.)
- 4  Agree to the Elite livestock Auctions Terms & Conditions and the Selling Agents Sale Terms & Conditions as printed in the official Sale Catalogue
- 5  Click "Register"
- 6  You will then be notified by email that an account has been created

- 7  Once an account has been created you are all "Set to Bid"
- 8  Each auction can then be viewed by clicking "Live Auction" logo on the Elite Livestock Auctions website
- 9  Once you receive email notification that your account has been created please go to the sale you wish to bid at and click "Request to Bid"
- 10  The sale agents will then approve your application to bid and on the sale catalogue you will see "✓ Bid Request Approved"
- 11  On Sale day simply login, click "Enter Auction" on the catalogue page and you can start bidding.
(There is no need for software download)
- 12  At the completion of the auction, invoicing will be carried out as per your registration details by the Selling Agents.

Having trouble registering and logging in?
Contact Elite Livestock Auctions
1300 15 31 35

Elite Livestock Auctions ABN 19 604 627 607
📍 340 Curtin Avenue West, Eagle Farm QLD 4009

📞 1300 15 31 35 📠 07 3041 5053
🌐 www.elitelivestockauctions.com.au



ASPEN ACRES T.N.T. 4Y

EWS 4Y

Born: 3/04/1989

Colour: Speckled

NORTON

SIRE: SPOTS AND SPROUTS DYNAMITE 23T

TAG# 92

PUSSY CAT 11

DAM: ASPEN ACRES 4U

COW #69

Notes: T.N.T is an old stayer and one of the most reliable bulls within the Speckle Park breed. He is a meat machine and so are his offspring, and his daughters go on to make great brood cows.



JUNE 2019 SPECKLE PARK GROUP BREEDPLAN

	Gestation Length	Birth Weight	200 Day Wt	400 Day Wt	600 Day Wt	Mat Cow Wt	Milk	Scrotal Size	Carcase Wt	Eye Muscle Area	Rib Fat	Rump Fat	Retail Beef Yield	IMF
EBV	+0.9	+0.7	+5	+9	+12	+16	+4	+0.7	+6	+0.0	+0.3	+0.4	-0.4	+0.2
<i>Acc</i>	60%	86%	76%	71%	73%	60%	37%	53%	52%	36%	44%	44%	41%	35%

CN ZPOTZ ZAZU 2Z

CNZ 2Z

Born: 20/04/2012

Colour: White

LEGACY ROUGHRIDER 52R (P) (Speckled)

SIRE: LEGACY TURNPIKE CRUISER 27T (P) (Leopard)

LEGACY ROMA 60R (P) (Speckled)

PRAIRIE HILL MASTERPLAN II 87L (Speckled)

DAM: PRAIRIE HILL NIRVANA 4N (Speckled)

PRAIRIE HILL 1H (Speckled)

Notes: Zazu has not disappointed, his calves are long and grow out well. We will be keeping semen out of two of his sons from this sale, that's how much we like them. The Zazu's on their own are worthy of an inspection in person. Zazu is a very structurally correct bull who first attracted our attention in the Canadian Source Speckle Park Sale in 2013. Laiton while in Canada in 2016 was able to view Zazu as a mature bull and he did not disappoint. Zazu is a free moving thick soft bull. We are very impressed with the extra length he has put into his offspring and we will be using this bull again in the future.



JUNE 2019 SPECKLE PARK GROUP BREEDPLAN

	Gestation Length	Birth Weight	200 Day Wt	400 Day Wt	600 Day Wt	Mat Cow Wt	Milk	Scrotal Size	Carcase Wt	Eye Muscle Area	Rib Fat	Rump Fat	Retail Beef Yield	IMF
EBV	+1.0	+1.7	+14	+22	+31	+38		+1.0	+18	-0.1	+0.1	+0.1	-0.3	
<i>Acc</i>	51%	77%	59%	52%	58%	42%		48%	36%	27%	33%	33%	30%	

CODIAK AMIGO GNK 65Y (P)

GNK 65Y

Born: 14/07/2011

Colour: White

LEGACY SCOUT 10S (P) (Speckled)

SIRE: LEGACY UNRIVALED 12U (P) (Speckled)

STAR BANK 34R (P) (Speckled)

HWY. 4 SPECKLE PARK 20L (Speckled)

DAM: CODIAK GNK 24T (P) (Leopard)

LEIGH-AL-ANN-LILY 2D

Notes: Codiak Amigo is another eye appealing sire that offers length and growth. His quiet nature is an added bonus. His first calves at the Scone SPI sale averaged \$10 300. BW 33.5kg.



JUNE 2019 SPECKLE PARK GROUP BREEDPLAN

	Gestation Length	Birth Weight	200 Day Wt	400 Day Wt	600 Day Wt	Mat Cow Wt	Milk	Scrotal Size	Carcase Wt	Eye Muscle Area	Rib Fat	Rump Fat	Retail Beef Yield	IMF
EBV	+0.7	+1.7	+9	+14	+19	+18		+0.7	+8		-0.1	-0.2		
<i>Acc</i>	53%	88%	68%	59%	63%	45%		37%	34%		25%	25%		



JOHNER STOCK FARM CONTINENTAL 9C (P)

JSF 9C

Born: 3/03/2015

Colour: Speckled

CODIAK TRUMP GNK 20T (P) (Speckled)

SIRE: CODIAK CALVIN GNK 58Y (White)

CODIAK SILVER FOX RKW 64L (White)

RIVER HILL SHOW BIZ 93S (P) (Leopard)

DAM: MONNERY RIVER JFN 7X (P) (Speckled)

MONNERY RIVER JFN 7T (P) (Leopard)

Notes: Our very first offering of Continental bulls this year. He was the sire of a high selling bull at the Scone Speckle Park sale this year. He was the heaviest of the JSF bulls in the 2015 drop. Laiton viewed him as a yearling in 2016.



JUNE 2019 SPECKLE PARK GROUP BREEDPLAN

	Gestation Length	Birth Weight	200 Day Wt	400 Day Wt	600 Day Wt	Mat Cow Wt	Milk	Scrotal Size	Carcase Wt	Eye Muscle Area	Rib Fat	Rump Fat	Retail Beef Yield	IMF
EBV	+0.0	+0.9	+8	+10	+13	+11		+0.0	+7	+0.6	+0.4	+0.5	-0.1	-0.1
<i>Acc</i>	55%	84%	65%	58%	60%	43%		49%	40%	29%	35%	35%	33%	26%

MINNAMURRA LANCELOT L14 (P)

MPC L14

Born: 26/05/2015

Colour: White

STAR BANK KING GEORGE 82U (P) (Speckled)

SIRE: SIX STAR 82U ROYAL FLESH 101Y (AI) (ET) (P) (Speckled)

STAR BANK 53R (P) (White)

CODIAK CRIKEY GNK 13U (P) (Speckled)

DAM: SIX STAR 13U PENELOPE G29 (AI) (ET) (P) (White)

LAKEVIEW PENELOPE 5P (Leopard)

Notes: Minnamurra Lancelot L14 was chosen as the back-up bull to our AI breeding program as his pedigree was an outcross to the majority of our cow herd. He also stood out for his early maturity and length of body. Semen has been sold in Australia and New Zealand. He is a maternal brother to the \$30 000 Minnamurra Marlin M4 who sold to JAD Speckle Park in the 2018 Minnamurra sale.



JUNE 2019 SPECKLE PARK GROUP BREEDPLAN

	Gestation Length	Birth Weight	200 Day Wt	400 Day Wt	600 Day Wt	Mat Cow Wt	Milk	Scrotal Size	Carcase Wt	Eye Muscle Area	Rib Fat	Rump Fat	Retail Beef Yield	IMF
EBV	+0.8	+1.8	+9	+11	+14	+14	+0	+0.1	+8	+0.9	+0.4	+0.5	+0.2	+0.1
<i>Acc</i>	57%	79%	66%	61%	64%	51%	32%	50%	47%	35%	43%	43%	41%	37%

WARATAH J30 (P)

LST J30

Born: 26/06/2013

Colour: White

P.A.R. MOO FASSA 03M (Speckled)

SIRE: CHAMPAGNE PRETENDER (ET) (P) (Speckled)

NOTTA PRETENDER 64P (ET) (Speckled)

RIVER HILL SAMSON 25S (S) (Speckled)

DAM: WARATAH EMBER E26 (ET)

STAR BANK 54R (P) (White)

Notes: Waratah J30 offers great volume and thickness. He was a stand out among our 2013 yearling bulls. He was the highest selling yearling bull in the 2014 sale. We are very pleased with the bulls he has sired. We have been using him in our embryo breeding program.



JUNE 2019 SPECKLE PARK GROUP BREEDPLAN

	Gestation Length	Birth Weight	200 Day Wt	400 Day Wt	600 Day Wt	Mat Cow Wt	Milk	Scrotal Size	Carcase Wt	Eye Muscle Area	Rib Fat	Rump Fat	Retail Beef Yield	IMF
EBV	-0.3	+0.9	+10	+19	+25	+22		+0.3	+17		-0.3	-0.4		
<i>Acc</i>	48%	77%	65%	58%	60%	46%		33%	38%		25%	25%		



YOGI GOES REDNECK

SDS 7Y

Born: 19/02/2011 **Colour:** Speckled
 P.A.R. MOO FASSA 03M (Speckled)
SIRE: REDNECK WILD WILLY 2W (AI) (P) (Speckled)
 PRAIRIE HILL NAUGHTY GIRL 90N (Speckled)
 ASPEN ACRES HORATIO 6H (Speckled)
DAM: ASPEN ACRES LINDA LOU 10L (Speckled)
 JOY OF P.A.R. 10J (Speckled)

Notes: Yogi Goes Redneck is an opportunity not to be missed! Laiton had the opportunity to see Yogi Goes Redneck when he was in Canada and was impressed by his calves. We have already used Yogi as well as one of his son's, Trade Secret in our embryo program.



JUNE 2019 SPECKLE PARK GROUP BREEDPLAN

	Gestation Length	Birth Weight	200 Day Wt	400 Day Wt	600 Day Wt	Mat Cow Wt	Milk	Scrotal Size	Carcase Wt	Eye Muscle Area	Rib Fat	Rump Fat	Retail Beef Yield	IMF
EBV	-3.7	-1.6	+6	+14	+17	+16		+0.3	+12	+0.6	+0.4	+0.6	-0.4	+0.2
<i>Acc</i>	56%	81%	66%	60%	65%	49%		56%	45%	34%	42%	42%	39%	31%

JOHNER STOCK FARM TRADE SECRET

JSF 11A

Born: 9/03/2013 **Colour:** White
 REDNECK WILD WILLY 2W (AI) (P) (Speckled)
SIRE: YOGI GOES REDNECK (Speckled)
 ASPEN ACRES LINDA LOU 10L (Speckled)
 RIVER HILL SHOW BIZ 93S (P) (Leopard)
DAM: MONNERY RIVER 7W (P) (Speckled)
 MONNERY RIVER 7P (White)

Notes: Trade Secret is a soft easy doing sire with great muscle tone. As a white bull he will colour mark the majority of his offspring. His first line up of bulls stood out in our 2018 sale and he sired the high selling bull that year. He has produced some show champions for us at beef 2018.



JUNE 2019 SPECKLE PARK GROUP BREEDPLAN

	Gestation Length	Birth Weight	200 Day Wt	400 Day Wt	600 Day Wt	Mat Cow Wt	Milk	Scrotal Size	Carcase Wt	Eye Muscle Area	Rib Fat	Rump Fat	Retail Beef Yield	IMF
EBV	-3.5	-1.3	+6	+12	+17	+21		+0.6	+9	-0.3	+0.6	+0.8	-0.8	+0.2
<i>Acc</i>	57%	91%	76%	69%	70%	52%		64%	51%	40%	51%	51%	48%	41%

CODIAK SPENCER GNK 52B (P)

GNK 52B

Born: 30/05/2014 **Colour:** Leopard
 CODIAK PHLEP GNK 3P (Speckled)
SIRE: CODIAK OSCAR GNK 8S (P) (Leopard)
 CODIAK MATEUSA RKW 63M (White)
 RAVEN MEADOWS MAGNUM 10N (Speckled)
DAM: CODIAK WILLA GNK 13W (P) (Speckled)
 CODIAK MISS CARLA RKW 21M (White)

Notes: Laiton first viewed Spencer at the 2016 Summit Three Sale in Canada, he was the pick of the bulls at that sale. We were fortunate enough to use him in our breeding program early and this year we'll see his first heifers sold at Waratah. We have retained a nice group of sisters to the animals in the sale.



JUNE 2019 SPECKLE PARK GROUP BREEDPLAN

	Gestation Length	Birth Weight	200 Day Wt	400 Day Wt	600 Day Wt	Mat Cow Wt	Milk	Scrotal Size	Carcase Wt	Eye Muscle Area	Rib Fat	Rump Fat	Retail Beef Yield	IMF
EBV	+0.8	+0.8	+7	+6	+3	+3	+2	+0.1	+2	-0.2	+0.8	+1.0	-0.6	+0.2
<i>Acc</i>	52%	85%	80%	67%	67%	50%	27%	44%	51%	31%	38%	38%	36%	32%



HS UNTAPPED 3A

HSF 3A

Born: 6/04/2013 **Colour:** Speckled
 BELMORAL'S SPECIAL 99H (Speckled)
SIRE: A & W 15R (P) (Leopard)
 TRIPLE A GEM 15G (Speckled)
 P.A.R. RILLEY 2R (P) (Speckled)
DAM: NOTTA 2R PRETENDER 4T (P) (Speckled)
 NOTTA PRETENDER 64P (ET) (Speckled)

Notes: Untapped a son of the great A&W 15R bull his progeny are thick and built like bricks, and are soft easy doing animals. We are pleased to present is sons and daughters for sale.



JUNE 2019 SPECKLE PARK GROUP BREEDPLAN

	Gestation Length	Birth Weight	200 Day Wt	400 Day Wt	600 Day Wt	Mat Cow Wt	Milk	Scrotal Size	Carcase Wt	Eye Muscle Area	Rib Fat	Rump Fat	Retail Beef Yield	IMF
EBV	+0.9	+0.3	+2	+4	+12	+15		+0.1	+7	+0.6	+0.4	+0.5	-0.2	+0.3
<i>Acc</i>	66%	90%	79%	70%	71%	55%		47%	54%	36%	48%	47%	45%	41%

LEGACY BONE CRUSHER 35B (P)

CJT 35B

Born: 17/04/2014 **Colour:** Leopard
 LEGACY SCOUT 10S (P) (Speckled)
SIRE: LEGACY UNLEASHED 73U (P) (Speckled)
 LEGACY PATTY 8P (Speckled)
 LEGACY UNLEASHED 73U (P) (Speckled)
DAM: LEGACY JINGLE 89X (P) (Speckled)
 LEGACY UNIFIC 6U (P) (Speckled)

Notes: A bull with an outcross pedigree for Australia and New Zealand. In our opinion the most exciting bull to have progeny now born in Australia. They did not disappoint as we have retained all his females born at Waratah. His sire Unleashed we admired on our visit to Canada in 2012 and we are excited to be able to offer some of his sons here for sale this year.



JUNE 2019 SPECKLE PARK GROUP BREEDPLAN

	Gestation Length	Birth Weight	200 Day Wt	400 Day Wt	600 Day Wt	Mat Cow Wt	Milk	Scrotal Size	Carcase Wt	Eye Muscle Area	Rib Fat	Rump Fat	Retail Beef Yield	IMF
EBV		+0.4	+7											
<i>Acc</i>		32%	25%											

PETEMAR SPECIAL SILAS 3D

PEW 3D

Born: 8/01/2016 **Colour:** White
 BELMORAL'S SPECIAL 99H (Speckled)
SIRE: REMIN'S SPECIAL 1L (Speckled)
 AMULET MISS 3A (Leopard)
 SAGE LAD 2L (Speckled)
DAM: MISS SAGE 2N (Speckled)
 CODIAK FALCON 20F (Speckled)

Notes: Silas is the new kid on the block for Waratah. We brought him from Watson's in Ontario in 2018. His brother Petemar Special Edition was impressive but Silas was a little longer in the body with awesome structure. A very quiet bull who is also white.



JUNE 2019 SPECKLE PARK GROUP BREEDPLAN

	Gestation Length	Birth Weight	200 Day Wt	400 Day Wt	600 Day Wt	Mat Cow Wt	Milk	Scrotal Size	Carcase Wt	Eye Muscle Area	Rib Fat	Rump Fat	Retail Beef Yield	IMF
EBV		+1.7	+11	+14	+21									
<i>Acc</i>		42%	33%	29%	30%									



WOLF LAKE BOB 24E (P)

DHB 24E

Born: 4/02/2017

Colour: Speckled

RAVENWORTH KLEOS 3Y (P) (Speckled)

SIRE: RAVENWORTH INVICTUS 103C (P) (Speckled)

RAVENWORTH NORTHERN STAR 101A (P) (Speckled)

RIVER HILL 12X ZAAR 7Z (P) (Speckled)

DAM: RAVENWORTH ASPEN 118C (P) (Speckled)

SPOTS 'N SPROUTS 31A (P) (Speckled)

Notes: Another new introduction for Waratah, we have been using Bob in both AI and ET programs last year. He has the trifecta being polled, black and a non-carrier of myostatin.



JUNE 2019 SPECKLE PARK GROUP BREEDPLAN

	Gestation Length	Birth Weight	200 Day Wt	400 Day Wt	600 Day Wt	Mat Cow Wt	Milk	Scrotal Size	Carcase Wt	Eye Muscle Area	Rib Fat	Rump Fat	Retail Beef Yield	IMF
EBV		+1.0												
Acc		25%												

FOFIA [®] **FREE NLIS Tags**
 *Buy 100 get 25 free
 ** Fits most applicators
 "Future of farming in Australia"

Large Female
97mm x 64mm

Medium Female
80mm x 57mm

Medium Male
70mm x 58mm

XLarge Female
118mm x 76mm

NLIS Button
30mm

Button Male
Dia 29mm

Proudly Sponsoring Waratah Speckle Park

Exclusively from:

4tags
Where do you go? .com

FREE Applicator
with orders 200+ NLIS Tags
**Recommended

www.4tags.com.au
 Ph: 1300 813 500
 Email: help@4tags.com.au



LOT 1 WARATAH NICK N72

LST N72

Born: 29/07/2017 Colour: Speckled Myostatin: F Poll: PcPc Coat: ED/ED Pedigree Assured: YES

YOGI GOES REDNECK (Speckled)
SIRE: JOHNER STOCK FARM TRADE SECRET (White)
 MONNERY RIVER 7W (P) (Speckled)
 STAR BANK KING GEORGE 82U (P) (Speckled)
DAM: WARATAH SPANISH ANGEL (ET) (P) (Black)
 RIVER HILL SPANISH ANGEL 5S (P) (Black)

Raw Data	
Birth Weight (kg)	40
Scrotal Size (cm)	39
Weight (kg)	664
P8 Fat (mm)	10
Rib Fat (mm)	8
EMA (cm ²)	107
IMF (%)	6.4



Trade Secret x King George x Moo Fassa
 Waratah Nick N72 is a long-bodied son of Trade Secret who can offer buyers extra fertility and frame.
 His actual numbers on scrotal size sets him apart as he is the equal third highest for scrotal size in Australia on Breedplan, and that lands him in the top 1% for fertility/scrotal size.

Waratah Nick N72 is an all-round performer, securing spots in the top 10% for Gestation Length, Rib Fat and P8 Fat score. He offers a low birth weight to breeders while maintaining good growth and development as seen by his 600 day performance weight. Nick has a strong paternal line from Trade Secret and is half brother to our 2018 top selling bull Waratah M&M, who sold to Minnamurra Speckle Park for \$20 000.

Waratah Nick's mother Spanish Angel F15, is one of our most fertile foundation cows here at Waratah. She has numerous ET calves in Australia, New Zealand and soon to be in the EU. Nick also has sisters in the heifer section of this sale. He is brother to lot 9.

JULY 2019 SPECKLE PARK GROUP BREEDPLAN

	Gestation Length	Birth Weight	200 Day Wt	400 Day Wt	600 Day Wt	Mat Cow Wt	Milk	Scrotal Size	Carcase Wt	Eye Muscle Area	Rib Fat	Rump Fat	Retail Beef Yield	IMF
EBV	-1.4	+0.8	+12	+18	+27	+31		+1.3	+13	+0.2	+0.7	+0.9	-0.5	+0.1
<i>Acc</i>	46%	75%	64%	61%	67%	52%		65%	51%	40%	48%	48%	45%	36%

Purchaser:..... \$.....

LOT 2 WARATAH NEXT GENERATION N80

LST N80

Born: 31/07/2017 Colour: White Myostatin: F Poll: PcPc Coat: ED/ED Pedigree Assured: YES

REDNECK WILD WILLY 2W (AI) (P) (Speckled)
SIRE: YOGI GOES REDNECK (Speckled)
 ASPEN ACRES LINDA LOU 10L (Speckled)
 WARATAH J30 (AI) (ET) (P) (White)
DAM: WARATAH E25 AMY L73 (ET) (Speckled)
 WARATAH E25 (ET) (P) (Black)

Raw Data	
Birth Weight (kg)	35
Scrotal Size (cm)	37
Weight (kg)	678
P8 Fat (mm)	8
Rib Fat (mm)	6
EMA (cm ²)	110
IMF (%)	6.1



Yogi Goes Redneck x Waratah J30 x Baker
 Waratah Next Generation N80 is the first of our Yogi Goes Redneck sons to sell.
 This well rounded white bull looks as good as his half brother Trade Secret, with all of the calving ease to boot, he is a definite heifer bull.
 His Breedplan numbers suggest he finishes in the top 5% of the breed for Birth Weight and Gestation Length for all bulls born in 2017. The maternal line of this bull is another plus being from our Amy E25 family, who are such prolific producers of topline performers.

Laiton likes the top on this bull as he scanned with an actual EMA of 110cm and in a tough season like we've had, Laiton is pretty happy for N80 to place in the top 20% for this trait. Waratah have retained semen on this heifer bull.

JULY 2019 SPECKLE PARK GROUP BREEDPLAN

	Gestation Length	Birth Weight	200 Day Wt	400 Day Wt	600 Day Wt	Mat Cow Wt	Milk	Scrotal Size	Carcase Wt	Eye Muscle Area	Rib Fat	Rump Fat	Retail Beef Yield	IMF
EBV	-2.3	-0.7	+7	+15	+17	+13		+0.2	+14	+1.1	-0.2	-0.3	+0.4	-0.1
<i>Acc</i>	43%	72%	60%	57%	64%	49%		63%	46%	36%	43%	43%	40%	29%

Purchaser:..... \$.....



LOT 3 WARATAH NIGHT STALKER N61

LST N61

Born: 9/09/2017

Colour: White

Myostatin: F

Poll: Pc/Pc

Coat: ED/ED

Pedigree Assured: Yes



LEGACY UNLEASHED 73U (P) (Speckled)
SIRE: LEGACY BONE CRUSHER 35B (P) (Leopard)
LEGACY JINGLE 89X (P) (Speckled)
REMIN'S SPECIAL 1L (Speckled)
DAM: PETEMAR TEQUILLA 1N (Speckled)
SPOTS AND SPROUTS 2B (Speckled)



Sire: Legacy Bone Crusher 35B (P)



Full Brother: Waratah N66

Bone Crusher x Remin's Special x Pussy Cat V

Our newest outcross Canadian Pedigree ... Waratah Night Stalker N61 is an eye-appealing, deep bodied, white bull, with a pedigree never before seen outside of Canada!

His sire Legacy Bone Crusher is an upstanding, well-muscled bull that offers thickness and carcass yield, another awesome trait of Speckle Parks.

Bone Crusher is not only impressive on the eye, but carries a lot of weight, has good sound feet and stands upright. You can see the superb thickness in this son of Bone Crusher, he is the spitting image of his legendary father. These exceptional qualities make Night Stalker N61 a standout in this year's bull line-up.

To prove his performance power and easy doing ability in such a hard year, Night Stalker has the highest EMA of 115cm in this year's sale bulls.

As we are waiting on Canadian testing results for Bone Crusher, we have been unable to have Bone Crusher sons on Breedplan or have them registered to date. However, I'm sure he would have been highly rated for both EMA and RBY. Another trait not to be overlooked is his amazingly well-structured feet, just like his Dam who is a 15 years old elite matron of the Petemar herd in Ontario.

Night Stalker offer's our clients the full package for a potential stud sire or outstanding commercial bull. His quiet nature is an added bonus!

We have also retained Night Stalker's full brother Waratah N66. Waratah has retained semen on this bull. Currently registration pending, Waratah Night Stalker N61 will have registration details available on sale day.

Raw Data	
Birth Weight (kg)	42
Scrotal Size (cm)	37
Weight (kg)	746
P8 Fat (mm)	9
Rib Fat (mm)	7
EMA (cm²)	115
IMF (%)	5.8

Purchaser:..... \$.....



LOT 4 WARATAH NEVADA N78

LST N78

Born: 24/08/2017 Colour: Speckled Myostatin: F Poll: PcPc Coat: ED/e Pedigree Assured: YES

LEGACY TURNPIKE CRUISER 27T (P) (Leopard)
SIRE: CN ZPOTZ ZAZU 2Z (Speckled)
PRAIRIE HILL NIRVANA 4N (Speckled)

STAR BANK KING GEORGE 82U (P) (Speckled)
DAM: WARATAH TEEKA J107 (AI) (ET) (P) (Speckled)
WATTLE GROVE 50S TEEKA G23 (ET) (Speckled)

Zazu x King George x John Wayne

Waratah Nevada N78 is the first of our CN Zpotz Zazu 2Z son's on offer this year.

He is out of one of our highly sought-after elite donor cows, Waratah Teeka J107. Teeka J107 is a well-structured, fertile cow having flushed 10 eggs in an embryo program. She also has embryos exported overseas. Her Zazu son Nevada N78 was a real standout as a calf. Not only among all the Zazu calves who have all exhibited his extra length, but of all the N-drop calves at Waratah. Nevada N78 has developed strongly as he has matured, showing remarkable growth. He finishes in the top 15% for 200 day weight, top 20% for 400 day weight and top 10% for 600 day weight. He also offers buyers excellent carcass quality with a carcass weight in the top 15%, not to mention a raw scan IMF of 6.4%.

Nevada N78 has the highest scrotal size of our 2019 sale bulls and his Breedplan numbers say that he is in the top 1% of the Speckle Park breed in Australia. We would also like to note that Nevada is the top animal for the 'scrotal size trait' in Australia on Breedplan and the second highest of all time, showing his fertility is in fact second to only one other. Nevada N78 is a bull we think very highly of here at Waratah and we will be retaining semen.

Raw Data	
Birth Weight (kg)	37
Scrotal Size (cm)	40
Weight (kg)	722
P8 Fat (mm)	10
Rib Fat (mm)	7
EMA (cm ²)	105
IMF (%)	6.4



JULY 2019 SPECKLE PARK GROUP BREEDPLAN

	Gestation Length	Birth Weight	200 Day Wt	400 Day Wt	600 Day Wt	Mat Cow Wt	Milk	Scrotal Size	Carcass Wt	Eye Muscle Area	Rib Fat	Rump Fat	Retail Beef Yield	IMF
EBV	+0.6	+2.3	+19	+27	+42	+51		+1.5	+23	+0.1	+0.2	+0.2	-0.2	+0.2
<i>Acc</i>	53%	72%	61%	58%	65%	50%		63%	47%	37%	45%	45%	42%	32%

Purchaser:..... \$.....

LOT 5 WARATAH NAVAJO N38

LST N38

Born: 10/09/2017 Colour: Speckled Myostatin: F Poll: PcPc Coat: ED/e Pedigree Assured: YES

LEGACY TURNPIKE CRUISER 27T (P) (Leopard)
SIRE: CN ZPOTZ ZAZU 2Z (Speckled)
PRAIRIE HILL NIRVANA 4N (Speckled)

PRAIRIE HILL JOHN WAYNE 50S (P) (Speckled)
DAM: WARATAH E23 (ET) (Black)
NOTTA PHO-FINISH 54P (Speckled)

Zazu x John Wayne x Lacerta

Waratah Navajo N38 another CN Zpotz Zazu 2Z son and he is an all-round performer.

Zazu 2Z has produced 2 of the top selling bulls in Canada recently with them selling into other Speckle Park Studs. Navajo N38 exhibits 6 traits in the top 10% of the breed or better.

He is in the top 10% for 200 and 400 day weights as well as top 10% for carcass weight and top 25% for RBY. Navajo N38 is sure to pass on his high carcass and yield traits to his progeny producing higher returns at the processor. He is a larger framed, later maturing bull, Navajo is in the top 5% for 600 day weight and fertility with a scrotal size of 38cm. He is one of the heaviest bulls in the sale and has a nice raw scan for IMF of 6.1%. He displays extra length that his sire Zazu puts into his progeny, and Navajo is sure to do the same. He would be best suited to cows or those thinking of growing out bullocks.

Navajo's dam Waratah E23 is one of the most proven cows in Australia, who has a flush record of 41 embryos in one flush. She is currently a part of our 2019 export flushing team. Navajo is a bull not to be missed. Waratah has retained semen in Navajo.

Raw Data	
Birth Weight (kg)	39
Scrotal Size (cm)	38
Weight (kg)	728
P8 Fat (mm)	10
Rib Fat (mm)	7
EMA (cm ²)	111
IMF (%)	6.1



JULY 2019 SPECKLE PARK GROUP BREEDPLAN

	Gestation Length	Birth Weight	200 Day Wt	400 Day Wt	600 Day Wt	Mat Cow Wt	Milk	Scrotal Size	Carcass Wt	Eye Muscle Area	Rib Fat	Rump Fat	Retail Beef Yield	IMF
EBV	+0.1	+2.4	+22	+31	+46	+48		+0.7	+28	+0.8	-0.4	-0.6	+0.5	-0.1
<i>Acc</i>	45%	73%	61%	58%	65%	50%		63%	48%	37%	44%	44%	41%	31%

Purchaser:..... \$.....



LOT 6 WARATAH NOAH N60

LST N60

Born: 2/09/2017 Colour: White Myostatin: F Poll: PcPc Coat: ED/ED Pedigree Assured: YES

A & W 15R (P) (Leopard)
SIRE: HS UNTAPPED 3A (Speckled)
 NOTTA 2R PRETENDER 4T (P) (Speckled)
 SPOTS 'N SPROUTS STANDS ALONE (P) (White)
DAM: WARATAH E25 AMY K12 (ET) (P) (Speckled)
 WARATAH E25 (ET) (P) (Black)

Raw Data	
Birth Weight (kg)	38
Scrotal Size (cm)	35
Weight (kg)	652
P8 Fat (mm)	13
Rib Fat (mm)	11
EMA (cm ²)	103
IMF (%)	7.1



Untapped 3A x Stands Alone x Baker

Noah N60 is the first HS Untapped 3A son to be sold by Waratah and he is a white Untapped son which is useful too.

He is a very soft easy doing bull and his quiet nature is just like his Stands Alone dam Waratah Amy K12.

Noah's scans for both P8 Fat and Rib Fat are both over 10mm and he has an IMF% of 7.1.

Waratah has retained semen in this bull.

JULY 2019 SPECKLE PARK GROUP BREEDPLAN

	Gestation Length	Birth Weight	200 Day Wt	400 Day Wt	600 Day Wt	Mat Cow Wt	Milk	Scrotal Size	Carcase Wt	Eye Muscle Area	Rib Fat	Rump Fat	Retail Beef Yield	IMF
EBV	-0.2	+0.3	+10	+15	+21	+22		-0.1	+16	+0.8	-0.5	-0.7	+0.6	-0.1
<i>Acc</i>	44%	60%	53%	48%	49%	40%		38%	38%	28%	35%	35%	33%	30%

Purchaser:..... \$.....

With a special 8% rate for a 3-star 12-month stud stock cover, I'm delighted to support the Waratah Speckle Park Sale

“Achmea, Australia’s specialist farm insurer, is delighted to support the sale. Take advantage of our market-leading rate of 8% for a 3-star 12-month stud stock cover and finalise your cover on the spot.

As your local Risk Specialist, I also offer farmers on-farm Risk Reviews.

Reducing risks can keep unexpected repair bills and premiums down.”

Local Risk Specialist,
ALLAN COWAN



Local Risk Specialist Allan Cowan | 0417 156 837 | allan.cowan@achmea.com.au

achmea.com.au



The information in this advertisement is general advice only and does not take into account your individual objectives, financial situation or needs (your personal circumstances). Before using this information to decide whether to purchase the insurance policy, you should consider your personal circumstances and the relevant Product Disclosure Statement available from the 'Downloads' section of our website www.achmea.com.au. Achmea Schadeverzekeringen N.V. ABN 86 158 237 702 AFSL 433984.



LOT 7 WARATAH NEVER LATE N64

LST N64

Born: 3/08/2017 Colour: Speckled Myostatin: F Poll: PcPc Coat: ED/ED Pedigree Assured: Pending

A & W 15R (P) (Leopard)
SIRE: HS UNTAPPED 3A (Speckled)
 NOTTA 2R PRETENDER 4T (P) (Speckled)
 ROCKY RIDGE SILVERADO BEN 1S (P) (Leopard)
DAM: LEGACY SASSAFRAS 97Y (P) (Speckled)
 LEGACY SASSAFRAS 1S (P) (Speckled)

Raw Data	
Birth Weight (kg)	37
Scrotal Size (cm)	34
Weight (kg)	688
P8 Fat (mm)	12
Rib Fat (mm)	8
EMA (cm ²)	104
IMF (%)	7.8



Untapped 3A x Rocky Ridge Silverado Ben x Playboy

Never Late N64 is one of our favourite bulls this year!
 Waratah Never Late has always been an outstanding individual.
 He is a slick coated bull who is incredibly docile and soft all over.
 He offers buyers an impressive battery of carcase traits.

On his actual scan data he's got an IMF% of 7.8, which is equal top scan of any other bull bred at Waratah in our 11 year history. Other scan data is a P8 Fat score of 12mm, a Rib Fat of 8mm and an EMA of 104cm. This ranks him in the top 10% for Rib and P8 Fat score and top 5% for IMF on Breedplan for bulls born in 2017.

Waratah Never Late is sure to pass on his outstanding fat coverage to his progeny making him an ideal choice to produce offspring for the Australian meat industry.

Never Late's maternal line sets him apart from all other Speckle Park bulls in Australia. Legacy Sassafras 97Y is an exceptional mature dam in Canada at 8 years of age. She is a moderate framed cow that is easy doing, has a sound structure and an awesome milker. She was one of two cows that caught Laiton's eye on his 2016 Canadian trip. He knew he needed some Sassafras genes introduced into our breeding heard at Waratah. Laiton had the privilege of seeing Sassafras 97Y again in 2018 and once more she truly stood out as an elite female in the breed.



Dam: Legacy Sassafras 97Y (P)

Don't miss this unique opportunity to secure proven outcross genetics in Australia.
 Semen in N64 has been retained.

JULY 2019 SPECKLE PARK GROUP BREEDPLAN

	Gestation Length	Birth Weight	200 Day Wt	400 Day Wt	600 Day Wt	Mat Cow Wt	Milk	Scrotal Size	Carcase Wt	Eye Muscle Area	Rib Fat	Rump Fat	Retail Beef Yield	IMF
EBV	+0.5	+0.2	+4	+6	+12	+16		-0.5	+7	+0.2	+0.8	+1.1	-0.7	+0.5
<i>Acc</i>	40%	69%	58%	55%	62%	46%		60%	46%	35%	43%	43%	40%	30%

Purchaser:..... \$.....





LOT 8 WARATAH NATIONAL TREASURE N47 LST N47

Born: 5/08/2017 Colour: Speckled Myostatin: F Poll: PcPc Coat: ED/ED Pedigree Assured: YES

LEGACY UNRIVALED 12U (P) (Speckled)
SIRE: **CODIAK AMIGO GNK 65Y (P) (White)**
CODIAK GNK 24T (P) (Leopard)

STAR BANK LACERTA 68L (Speckled)
DAM: **WARATAH H23 (AI) (ET) (P) (Speckled)**
WARATAH SPANISH ANGEL F12 (ET) (P) (Speckled)

Amigo x Lacerta x King George

Waratah National Treasure N47 is a well-muscled Amigo son with good feet and legs and a nice tight sheath.

He has a strong maternal line, being bred out of an exceptional donor cow Waratah H23. He has a paternal line that is pretty strong too with Codiak Amigo and then Lacerta and King George bringing up the rear.

Waratah H23 was sold to South Australia as a foundation cow to Mojo-Ridge Speckle Park Macclesfield. When she was at Waratah she was known for her high fertility averaging over 10 embryos per flush. She has undoubtedly passed her good fertility traits on to her son National Treasure who has a large scrotal size, placing him in the top 1% for scrotal size on breed plan and equal 5th of all Speckle Park bulls in Australia.

At Waratah we value highly the fertility in our animals and have continually bred with this in mind. It is interesting to note, that 3 out of the 4 2017 born bulls that score higher than National Treasure for the scrotal size fertility trait are Waratah bred bulls. He is brother to lot 12.

Raw Data	
Birth Weight (kg)	40
Scrotal Size (cm)	39
Weight (kg)	676
P8 Fat (mm)	9
Rib Fat (mm)	7
EMA (cm ²)	102
IMF (%)	6.4



JULY 2019 SPECKLE PARK GROUP BREEDPLAN

	Gestation Length	Birth Weight	200 Day Wt	400 Day Wt	600 Day Wt	Mat Cow Wt	Milk	Scrotal Size	Carcase Wt	Eye Muscle Area	Rib Fat	Rump Fat	Retail Beef Yield	IMF
EBV	+0.5	+1.7	+11	+16	+21	+19		+1.1	+10	+0.2	-0.3	-0.4	+0.2	-0.2
Acc	44%	74%	61%	58%	64%	50%		61%	47%	36%	43%	43%	40%	31%

Purchaser:..... \$.....

LOT 9 WARATAH NORTEN N63 LST N63

Born: 3/08/2017 Colour: Speckled Myostatin: F Poll: PcPc Coat: ED/ED Pedigree Assured: YES

YOGI GOES REDNECK (Speckled)
SIRE: **JOHNER STOCK FARM TRADE SECRET (White)**
MONNERY RIVER 7W (P) (Speckled)

STAR BANK KING GEORGE 82U (P) (Speckled)
DAM: **WARATAH SPANISH ANGEL (ET) (P) (Black)**
RIVER HILL SPANISH ANGEL 5S (P) (Black)

Trade Secret x King George x Moo Fassa

Waratah Norten N63 is a JSF Trade Secret son who has massive numbers for the fertility traits in Breedplan, he ranks in the top 1% for scrotal size.

He shares equal 5th place for scrotal size out of all the N drop calves in Australia.

Have a look at this bull's other Breedplan numbers, its an interesting mix.

Raw Data	
Birth Weight (kg)	40
Scrotal Size (cm)	38
Weight (kg)	640
P8 Fat (mm)	9
Rib Fat (mm)	6
EMA (cm ²)	105
IMF (%)	5.4



JULY 2019 SPECKLE PARK GROUP BREEDPLAN

	Gestation Length	Birth Weight	200 Day Wt	400 Day Wt	600 Day Wt	Mat Cow Wt	Milk	Scrotal Size	Carcase Wt	Eye Muscle Area	Rib Fat	Rump Fat	Retail Beef Yield	IMF
EBV	-1.4	+0.7	+11	+16	+24	+29		+1.1	+13	+0.3	+0.5	+0.6	-0.2	-0.1
Acc	46%	75%	64%	61%	67%	52%		65%	51%	40%	48%	48%	45%	36%

Purchaser:..... \$.....



LOT 10 WARATAH NO FEAR N55

LST N55

Born: 5/08/2017 **Colour:** Speckled **Myostatin:** F **Poll:** PcPc **Coat:** ED/ED **Pedigree Assured:** Pending

SPOTS AND SPROUTS DYNAMITE 23T
SIRE: ASPEN ACRES T.N.T. 4Y (Speckled)
ASPEN ACRES 4U

SPOTS 'N SPROUTS STANDS ALONE (P) (White)
DAM: WARATAH E25 AMY K12 (ET) (P) (Speckled)
WARATAH E25 (ET) (P) (Black)

TNT x Stands Alone x Baker

Waratah No Fear N55 is one of two Aspen Acres TNT sons in this year's sale.

TNT was known to produce kilos of meat and No Fear N55 is a soft easy maintenance bull that is extra thick and early maturing.

He offer's buyers the ability to produce early maturing offspring with higher weight gains.

No Fear's raw scan data shows he has good P8 Fat coverage of 11mm and Rib Fat of 10mm as well as an IMF of 7.3%.

TNT was known for his outstanding milky females in Canada and No Fear exhibits similar traits, both being in the top 10% for milk.

No Fear shares the same docility as his Stands Alone dam, Waratah Amy K12 who is a bomb proof, quiet natured cow. Full brother to lot 11.

Raw Data	
Birth Weight (kg)	38
Scrotal Size (cm)	36
Weight (kg)	652
P8 Fat (mm)	11
Rib Fat (mm)	10
EMA (cm ²)	105
IMF (%)	7.3



JULY 2019 SPECKLE PARK GROUP BREEDPLAN

	Gestation Length	Birth Weight	200 Day Wt	400 Day Wt	600 Day Wt	Mat Cow Wt	Milk	Scrotal Size	Carcass Wt	Eye Muscle Area	Rib Fat	Rump Fat	Retail Beef Yield	IMF
EBV	-0.2	+0.3	+10	+17	+20	+20	+6	+0.2	+14	+0.2	+0.1	+0.1	-0.2	+0.1
<i>Acc</i>	46%	73%	62%	60%	66%	53%	28%	64%	50%	40%	47%	47%	44%	35%

Purchaser:..... \$.....

LOT 11 WARATAH NEVER DONE N68

LST N68

Born: 3/08/2017 **Colour:** Speckled **Myostatin:** F **Poll:** PcPc **Coat:** ED/ED **Pedigree Assured:** Pending

SPOTS AND SPROUTS DYNAMITE 23T
SIRE: ASPEN ACRES T.N.T. 4Y (Speckled)
ASPEN ACRES 4U

SPOTS 'N SPROUTS STANDS ALONE (P) (White)
DAM: WARATAH E25 AMY K12 (ET) (P) (Speckled)
WARATAH E25 (ET) (P) (Black)

TNT x Stands Alone x Baker

Waratah Never Done N68 is the second Aspen Acres TNT son being offered this year.

He is a full brother to the previous lot exhibiting a lot of similar traits. He too is in the top 10% for milk.

He is an outstanding soft early maturing bull that is also quite natured like his Stands Alone mother.

Never Done N68 carries a lot of meat on his frame which is reflected in his breed plan figures placing him in the top 25% for Carcass Weight and top 10% for Retail Beef Yield.

He is a bull that ticks all the boxes for making great Speckle Park calves.

Raw Data	
Birth Weight (kg)	39
Scrotal Size (cm)	35
Weight (kg)	668
P8 Fat (mm)	6
Rib Fat (mm)	4
EMA (cm ²)	103
IMF (%)	5.3



JULY 2019 SPECKLE PARK GROUP BREEDPLAN

	Gestation Length	Birth Weight	200 Day Wt	400 Day Wt	600 Day Wt	Mat Cow Wt	Milk	Scrotal Size	Carcass Wt	Eye Muscle Area	Rib Fat	Rump Fat	Retail Beef Yield	IMF
EBV	-0.4	+0.8	+13	+19	+26	+28	+6	+0.0	+20	+0.5	-1.2	-1.6	+1.1	-0.4
<i>Acc</i>	46%	73%	62%	60%	66%	53%	28%	64%	50%	40%	47%	47%	44%	35%

Purchaser:..... \$.....



LOT 12 WARATAH NAILED IT N50

LST N50

Born: 2/08/2017 **Colour:** Speckled **Myostatin:** F **Poll:** PcPc **Coat:** ED/ED **Pedigree Assured:** YES

LEGACY UNRIVALED 12U (P) (Speckled)
SIRE: CODIAK AMIGO GNK 65Y (P) (White)
CODIAK GNK 24T (P) (Leopard)

STAR BANK LACERTA 68L (Speckled)
DAM: WARATAH H23 (AI) (ET) (P) (Speckled)
WARATAH SPANISH ANGEL F12 (ET) (P) (Speckled)

Amigo x Lacerta x King George

Waratah Nailed It N50 is a long soft Codiak Amigo son with the same fertility as his brother lot 8, being in the top 5% for his scrotal size.

Nailed It N50 offers his additional fat coverage with the third highest IMF scan in the 2019 Waratah sale bulls of 7.2% as well as a high P8 and Rib Fat scan of 11mm and 9mm.

Waratah Nailed It N50 is a high quality bull displaying strong carcass traits the Speckle Park breed is renowned for and he is sure to pass onto his offspring.

Raw Data	
Birth Weight (kg)	36
Scrotal Size (cm)	40
Weight (kg)	686
P8 Fat (mm)	11
Rib Fat (mm)	9
EMA (cm ²)	104
IMF (%)	7.2



JULY 2019 SPECKLE PARK GROUP BREEDPLAN

	Gestation Length	Birth Weight	200 Day Wt	400 Day Wt	600 Day Wt	Mat Cow Wt	Milk	Scrotal Size	Carcase Wt	Eye Muscle Area	Rib Fat	Rump Fat	Retail Beef Yield	IMF
EBV	+0.3	+1.6	+12	+18	+24	+23		+0.8	+14		-0.3	-0.4	+0.4	
<i>Acc</i>	39%	62%	50%	45%	47%	37%		33%	32%		27%	27%	26%	

Purchaser:..... \$.....

LOT 13 WARATAH RED NED N48 (S)

UNREGISTERED

Born: 20/08/2017 **Colour:** Red

LEGACY TURNPIKE CRUISER 27T (P) (Leopard)
SIRE: CN ZPOTZ ZAZU 2Z (Speckled)
PRAIRIE HILL NIRVANA 4N (Speckled)

WATTLE GROVE MOONSHINE E10 (WHITE)
DAM: WARATAH SPANISH ANGEL J194 (AI) (ET) (Speckled)
WARATAH SPANISH ANGEL F15 (ET) (BLACK)

Zazu x Moonshine x Baker

This bull is being offered as an un-registered sire as he is RED but many astute judges have looked at Red Ned N48 and were blown away by his balance and his butt.

He is an eye-catching, long bodied CN Zpotz Zazu 2Z son. Red Ned N48 is a high-quality bull that should not be overlooked due to his coat colour.

He would be ideal for any commercial buyer wanting to inject Speckle Park thickness and muscle into their herd. Waratah Red Ned N48 was a late addition to this year's sale, however if given the same feed source opportunity as his counterparts pre-scanning, I'm confident his raw data scans would have been better.

While this bull is a pure bred Speckle Park bull he is not able to be registered with SPI due to his coat colour and is ineligible to be a part of Breedplan. He would be ideal for any breeder wanting to keep the colour of their herd red. Please note he has small scurs.

Raw Data	
Birth Weight (kg)	39
Scrotal Size (cm)	39
Weight (kg)	656
P8 Fat (mm)	6
Rib Fat (mm)	4
EMA (cm ²)	97
IMF (%)	5.1



	Gestation Length	Birth Weight	200 Day Wt	400 Day Wt	600 Day Wt	Mat Cow Wt	Milk	Scrotal Size	Carcase Wt	Eye Muscle Area	Rib Fat	Rump Fat	Retail Beef Yield	IMF
EBV														
<i>Acc</i>														

Purchaser:..... \$.....



LOT 14 WARATAH NIX N62

LST N62

Born: 23/08/2017 Colour: Speckled Myostatin: F Poll: PcPc Coat: ED/e Pedigree Assured: YES

LEGACY TURNPIKE CRUISER 27T (P) (Leopard)
SIRE: CN ZPOTZ ZAZU 2Z (Speckled)
 PRAIRIE HILL NIRVANA 4N (Speckled)
 STAR BANK KING GEORGE 82U (P) (Speckled)
DAM: WARATAH GINA J67 (AI) (ET) (Black)
 WATTLE GROVE 26T GINA 68G G8 (ET) (Speckled)

Raw Data	
Birth Weight (kg)	37
Scrotal Size (cm)	39
Weight (kg)	664
P8 Fat (mm)	9
Rib Fat (mm)	7
EMA (cm ²)	101
IMF (%)	5.9



Zazu x King George x Crikey

Waratah Nix N62 is a lovely soft slick coated bull.
 He is in the top 1% for scrotal size and equal 4th highest in the breed for the 2017 N drop bulls in Australia.
 Nix N62 has some nice Breedplan numbers being in the top 25% for IMF, Rib and P8 Fat.

He is one of the few bulls from the Gina cow family. Waratah Nix N62 has not yet reached his full potential and still has some growing to do.

JULY 2019 SPECKLE PARK GROUP BREEDPLAN

	Gestation Length	Birth Weight	200 Day Wt	400 Day Wt	600 Day Wt	Mat Cow Wt	Milk	Scrotal Size	Carcase Wt	Eye Muscle Area	Rib Fat	Rump Fat	Retail Beef Yield	IMF
EBV	+0.8	+1.6	+11	+17	+26	+32		+1.2	+13	-0.2	+0.4	+0.5	-0.5	+0.2
<i>Acc</i>	52%	71%	59%	56%	64%	49%		63%	46%	37%	44%	44%	41%	31%

Purchaser:..... \$.....

LOT 15 WARATAH NAVIGATOR N40

LST N40

Born: 6/08/2017 Colour: White Myostatin: F Poll: PcPc Coat: ED/ED Pedigree Assured: Pending

CODIAK OSCAR GNK 8S (P) (Leopard)
SIRE: CODIAK PUTNAM GNK 61Y (P) (Leopard)
 NORTHERN LIGHTS 14N (White)
 LEGACY TURNPIKE CRUISER 27T (Leopard)
DAM: DLR ZIPPERY 42Z (Speckled)
 DLR JAZLYN 14V (P) (Speckled)

Raw Data	
Birth Weight (kg)	43
Scrotal Size (cm)	36
Weight (kg)	706
P8 Fat (mm)	9
Rib Fat (mm)	7
EMA (cm ²)	106
IMF (%)	6.8



Putnam x Turnpike Cruiser x R and S 9M

Waratah Navigator N40 carries the greatest depth of body in this year's sale.
 He is an easy moving bull with a deep hind quarter. Navigator N40 had a real nice IMF scan at 6.8%.

He has an outcross maternal line and is worth taking a look at.

DLR Zippery 42Z was a standout cow on Laiton's 2016 Canadian trip at Andrew Metcalf's in Ontario. DLR Zippery 42Z is a deep bodied cow that stood out for her sound structure, good udder and milking capacity. She not only has an outcross pedigree but had a fantastic calf at foot in both 2016 and 2018. We are retaining Navigator's full brother at Waratah.

Navigator's registration is pending and details will be available on sale day.

	Gestation Length	Birth Weight	200 Day Wt	400 Day Wt	600 Day Wt	Mat Cow Wt	Milk	Scrotal Size	Carcase Wt	Eye Muscle Area	Rib Fat	Rump Fat	Retail Beef Yield	IMF
EBV														
<i>Acc</i>														

Purchaser:..... \$.....



LOT 16 WARATAH NATURAL BEAUTY N69

LST N69

Born: 6/08/2017

Colour: Leopard

Myostatin: F

Poll: PcPc

Coat: ED/ED

Pedigree Assured: YES

LEGACY UNLEASHED 73U (P) (Speckled)
SIRE: LEGACY BONE CRUSHER 35B (P) (Leopard)
 LEGACY JINGLE 89X (P) (Speckled)

REMIN'S SPECIAL 1L (Speckled)
DAM: PETEMAR LORETTA 5X (Speckled)
 PETEMAR LOUISE 4M (Speckled)

Bone Crusher x Special 1L x Jay 1J

Waratah Natural Beauty N69 is the earliest maturing Bone Crusher son, so he was a standout as a calf.

We chose to use him as a yearling on commercial cows because of his maturity and good feet and legs. His scans are a little below average but we will forgive him as he came out of the cows late and still had his working clothes on scanning day.

He has a total outcross pedigree to any Speckle Park cattle in Australia as both his Sire and Dam are new to Australia.

His registration is pending and will have details on sale day.

We have retained semen.

Raw Data	
Birth Weight (kg)	44
Scrotal Size (cm)	35
Weight (kg)	670
P8 Fat (mm)	8
Rib Fat (mm)	6
EMA (cm ²)	98
IMF (%)	5.5



JULY 2019 SPECKLE PARK GROUP BREEDPLAN

	Gestation Length	Birth Weight	200 Day Wt	400 Day Wt	600 Day Wt	Mat Cow Wt	Milk	Scrotal Size	Carcase Wt	Eye Muscle Area	Rib Fat	Rump Fat	Retail Beef Yield	IMF
EBV Acc														

Purchaser:..... \$.....





LOT 17 WARATAH NO YOUR GAME N34

LST N34

Born: 05/08/2017 **Colour:** White **Myostatin:** F **Poll:** PcPc **Coat:** ED/ED **Pedigree Assured:** Pending

CODIAK OSCAR GNK 8S (P) (Leopard)
SIRE: CODIAK PUTNAM GNK 61Y (P) (Leopard)
NORTHERN LIGHTS 14N (White)
LEGACY TURNPIKE CRUISER 27T (Leopard)
DAM: DLR ZIPPERY 42Z (Speckled)
DLR JAZLYN 14V (P) (Speckled)

Raw Data	
Birth Weight (kg)	
Scrotal Size (cm)	35
Weight (kg)	634
P8 Fat (mm)	8
Rib Fat (mm)	6
EMA (cm ²)	101
IMF (%)	6.0



Putnam x Turnpike Cruiser x R and S 9M

Waratah No Your Game N34 is a nice white Putnam son who hails from the Andchris herd in Ontario.

N34 is something different with DLR Zippery as the mum.

No Your Game will produce calves with nice marbling as his IMF scan is 6.

Being white he will mark the majority of his progeny with the Speckle Park colour pattern to form a uniform line of calves.

This bull's registration is pending, as we are waiting on his parent verification to come back from the lab, more details available on sale day.

	Gestation Length	Birth Weight	200 Day Wt	400 Day Wt	600 Day Wt	Mat Cow Wt	Milk	Scrotal Size	Carcase Wt	Eye Muscle Area	Rib Fat	Rump Fat	Retail Beef Yield	IMF
EBV														
<i>Acc</i>														

Purchaser:..... \$.....

LOT 18 WARATAH NEMO N39

LST N39

Born: 17/08/2017 **Colour:** Speckled **Myostatin:** F **Poll:** PcPc **Coat:** ED/ED **Pedigree Assured:** YES

REDNECK WILD WILLY 2W (AI) (P) (Speckled)
SIRE: YOGI GOES REDNECK (Speckled)
ASPEN ACRES LINDA LOU 10L (Speckled)
CODIAK AMIGO GNK 65Y (P) (White)
DAM: WARATAH EMBER L511 (ET) (P) (Speckled)
WARATAH EMBER E26 (ET)

Raw Data	
Birth Weight (kg)	35
Scrotal Size (cm)	35
Weight (kg)	650
P8 Fat (mm)	7
Rib Fat (mm)	7
EMA (cm ²)	107
IMF (%)	6.2



Yogi x Amigo x Samson

Waratah Nemo N39 is a thick set bull with lots of muscle.

He has a birth weight of 35kg and would be a very suitable heifer bull, this is backed up by his Breedplan numbers a top 5% for Gestation Length and top 10% for Birth Weight.

He also has a big top line for his size with an EMA of 107.

His ability to put marbling into his calves is confirmed with an IMF scan of 6.2.

His dam Ember L511 was one of the best milking females on Waratah as a heifer and it was for this reason, she has gone into our Elite donor cow flush program, watch out for the good milking females Nemo N39 will make.

JULY 2019 SPECKLE PARK GROUP BREEDPLAN

	Gestation Length	Birth Weight	200 Day Wt	400 Day Wt	600 Day Wt	Mat Cow Wt	Milk	Scrotal Size	Carcase Wt	Eye Muscle Area	Rib Fat	Rump Fat	Retail Beef Yield	IMF
EBV	-2.2	-0.4	+7	+17	+22	+19		+0.3	+13	+0.8	+0.0	-0.1	-0.1	+0.1
<i>Acc</i>	48%	68%	59%	56%	64%	48%		63%	46%	36%	43%	43%	40%	28%

Purchaser:..... \$.....



LOT 19 WARATAH NILE N36

NREGISTERED LST N36

Born: 28/09/2017 Colour: White Myostatin: F Poll: PcPc Coat: ED/ED Pedigree Assured: No

SIX STAR 82U ROYAL FLESH 101Y (AI) (ET) (P) (Speckled)
SIRE: MINNAMURRA LANCELOT L14 (AI) (P) (White)
 SIX STAR 13U PENELOPE G29 (AI) (ET) (P) (White)

DAM: SPECKLE PARK UNKNOWN

Waratah Nile N36 is a nice white bull from our Minnamurra Lancelot herdsire. He will produce calves with great marbling as his actual IMF scan is 6.7%. This carcass specialist bull will produce thick topped calves as his EMA is 107, quite large for a bull his size. N36 is unable to be registered as we have been unable to parent verify his Dam. He was raised by a foster mother.

Raw Data	
Birth Weight (kg)	
Scrotal Size (cm)	39
Weight (kg)	622
P8 Fat (mm)	8
Rib Fat (mm)	6
EMA (cm ²)	107
IMF (%)	6.7



	Gestation Length	Birth Weight	200 Day Wt	400 Day Wt	600 Day Wt	Mat Cow Wt	Milk	Scrotal Size	Carcase Wt	Eye Muscle Area	Rib Fat	Rump Fat	Retail Beef Yield	IMF
EBV Acc														

Purchaser:..... \$.....

LOT 20 WARATAH NEW FRONTIER N79

LST N79

Born: 17/08/2017 Colour: Speckled Myostatin: C Poll: PcPc Coat: ED/ED Pedigree Assured: YES

CODIAK CALVIN GNK 58Y (White)
SIRE: JOHNER STOCK FARM CONTINENTAL 9C (P) (Speckled)
 MONNERY RIVER JFN 7X (P) (Speckled)

WATTLE GROVE MOONSHINE E10 (ET) (White)
DAM: WARATAH PHO-FINISH J155 (AI) (ET) (P) (Speckled)
 WARATAH E23 (ET) (Black)

Continental x Moonshine x John Wayne

Waratah New Frontier N79 is the first Continental son in this year's sale.

With a top line big enough to sit down and have your dinner on, with an EMA scan of 111, this puts him in the top 15% for this trait, his early maturity shows with a 200 day weight in the top 20%.

He is a nice outcross with the Moonshine bull in his pedigree and N79's mum Pho-Finish J155 is also one of our rock-solid flush cows.

Raw Data	
Birth Weight (kg)	40
Scrotal Size (cm)	34
Weight (kg)	632
P8 Fat (mm)	7
Rib Fat (mm)	6
EMA (cm ²)	111
IMF (%)	4.2



JULY 2019 SPECKLE PARK GROUP BREEDPLAN

	Gestation Length	Birth Weight	200 Day Wt	400 Day Wt	600 Day Wt	Mat Cow Wt	Milk	Scrotal Size	Carcase Wt	Eye Muscle Area	Rib Fat	Rump Fat	Retail Beef Yield	IMF
EBV	-0.6	+2.2	+18	+23	+30	+25		-0.3	+17	+1.3	+0.0	-0.1	+0.6	-0.3
Acc	54%	74%	62%	59%	66%	50%		64%	47%	37%	44%	44%	41%	30%

Purchaser:..... \$.....



LOT 21 WARATAH NATE N57

LST N57

Born: 2/08/2017 Colour: Black Myostatin: F Poll: PcPc Coat: ED/ED Pedigree Assured: YES

REDNECK WILD WILLY 2W (AI) (P) (Speckled)
SIRE: YOGI GOES REDNECK (Speckled)
 ASPEN ACRES LINDA LOU 10L (Speckled)
 WARATAH J30 (AI) (ET) (P) (White)
DAM: WARATAH E25 AMY L83 (ET) (Speckled)
 WARATAH E25 (ET) (P) (Black)

Raw Data	
Birth Weight (kg)	38
Scrotal Size (cm)	34
Weight (kg)	620
P8 Fat (mm)	7
Rib Fat (mm)	6
EMA (cm ²)	106
IMF (%)	6.8



Yogi x Waratah J30 x Baker

Waratah Nate N57 a black Yogi son in the top 5% for both Gestation length and Birth Weight, has a IMF scan in the high sixes with a 6.8 and a medium level of fat cover with 7 and 6.

If you want a heifer bull to keep your calves black, this may be the bull for you.

JULY 2019 SPECKLE PARK GROUP BREEDPLAN

	Gestation Length	Birth Weight	200 Day Wt	400 Day Wt	600 Day Wt	Mat Cow Wt	Milk	Scrotal Size	Carcase Wt	Eye Muscle Area	Rib Fat	Rump Fat	Retail Beef Yield	IMF
EBV	-2.2	-0.6	+8	+15	+16	+13		-0.3	+13	+0.9	-0.1	-0.2	+0.2	+0.1
<i>Acc</i>	42%	72%	59%	57%	64%	49%		64%	47%	37%	44%	44%	41%	29%

Purchaser:..... \$.....

LOT 22 WARATAH NOW OR NEVER N58

LST N58

Born: 4/08/2017 Colour: Black Myostatin: F Poll: PcPc Coat: ED/ED Pedigree Assured: YES

A & W 15R (P) (Leopard)
SIRE: HS UNTAPPED 3A (Speckled)
 NOTTA 2R PRETENDER 4T (P) (Speckled)
 ROCKY RIDGE SILVERADO BEN 1S (P) (Leopard)
DAM: LEGACY SASSAFRAS 97Y (P) (Speckled)
 LEGACY SASSAFRAS 1S (P) (Speckled)

Raw Data	
Birth Weight (kg)	36
Scrotal Size (cm)	37
Weight (kg)	660
P8 Fat (mm)	7
Rib Fat (mm)	7
EMA (cm ²)	100
IMF (%)	7.0



Untapped x Silverado Ben x Playboy

Waratah Now or Never N58 is a full brother to lot 7.

Legacy Sassafras 97Y is his Dam giving him an outcross pedigree, like his brother he also has a high IMF scan with 7.

N58's registration is pending, as we are waiting on his parent verification to come back from the lab, Breedplan available on sale day.

If you want speckled coloured calves out of your white cows, or keep your calves black out of black cows this could be the bull for you.

	Gestation Length	Birth Weight	200 Day Wt	400 Day Wt	600 Day Wt	Mat Cow Wt	Milk	Scrotal Size	Carcase Wt	Eye Muscle Area	Rib Fat	Rump Fat	Retail Beef Yield	IMF
EBV														
<i>Acc</i>														

Purchaser:..... \$.....



LOT 23 WARATAH NIGHTLIGHT N37 LST N37

Born: 30/08/2017 Colour: Black Myostatin: C Poll: PcPc Coat: ED/ED Pedigree Assured: YES

REDNECK WILD WILLY 2W (AI) (P) (Speckled)
SIRE: YOGI GOES REDNECK (Speckled)
ASPEN ACRES LINDA LOU 10L (Speckled)

SPOTS 'N SPROUTS STANDS ALONE (P) (White)
DAM: WARATAH E25 AMY K57 (ET) (P) (Speckled) (TW)
WARATAH E25 (ET) (P) (Black)

Yogi x Stands Alone x Baker

All the signs point towards Waratah Night Light N37 being a heifer bull, his birth weight was 31kg and on Breedplan he is in the top 1% of the breed for Gestation Length and top 5% for Birth Weight. He also has very respectable scans with P8 Fat 11, Rib 9 and EMA of 107.

His sire Yogi Goes Red Neck has been the best calving ease/heifer bull we have used to date at Waratah. Yogi is ranked number one on Breedplan for all Speckle Park cattle for Gestation Length with -3.7.

Raw Data	
Birth Weight (kg)	31
Scrotal Size (cm)	37
Weight (kg)	624
P8 Fat (mm)	11
Rib Fat (mm)	9
EMA (cm ²)	109
IMF (%)	5.6



JULY 2019 SPECKLE PARK GROUP BREEDPLAN

	Gestation Length	Birth Weight	200 Day Wt	400 Day Wt	600 Day Wt	Mat Cow Wt	Milk	Scrotal Size	Carcase Wt	Eye Muscle Area	Rib Fat	Rump Fat	Retail Beef Yield	IMF
EBV	-2.5	-0.5	+12	+20	+24	+21		+0.1	+18	+0.8	-0.4	-0.6	+0.5	-0.2
<i>Acc</i>	39%	55%	47%	44%	46%	37%		39%	34%	27%	32%	32%	30%	27%

Purchaser:..... \$.....

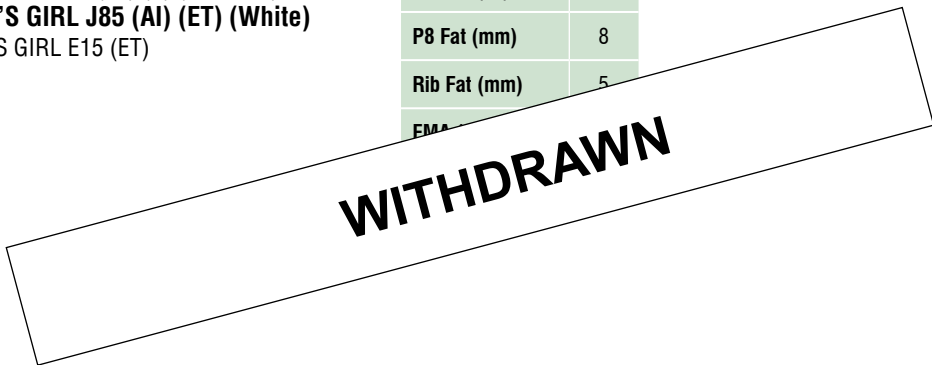
LOT 24 WARATAH NICHOLII N74 LST N74

Born: 19/09/2017 Colour: White Myostatin: F Poll: PcPc Coat: ED/ED Pedigree Assured: YES

SIX STAR 82U ROYAL FLESH 101Y (AI) (ET) (P) (Speckled)
SIRE: MINNAMURRA LANCELOT L14 (AI) (P) (White)
SIX STAR 13U PENELOPE G29 (AI) (ET) (P) (White)

CHAMPAGNE PRETENDER (ET) (P) (Speckled)
DAM: WARATAH AMY'S GIRL J85 (AI) (ET) (White)
WARATAH AMY'S GIRL E15 (ET)

Raw Data	
Birth Weight (kg)	40
Scrotal Size (cm)	34
Weight (kg)	602
P8 Fat (mm)	8
Rib Fat (mm)	5
EMA	



JULY 2019 SPECKLE PARK GROUP BREEDPLAN

	Gestation Length	Birth Weight	200 Day Wt	400 Day Wt	600 Day Wt	Mat Cow Wt	Milk	Scrotal Size	Carcase Wt	Eye Muscle Area	Rib Fat	Rump Fat	Retail Beef Yield	IMF
EBV	+0.3	+1.6	+11	+14	+15	+13		-0.3	+12	+1.4	+0.5	+0.6	+0.4	+0.1
<i>Acc</i>	42%	71%	59%	57%	64%	49%		63%	47%	37%	44%	44%	41%	31%

Purchaser:..... \$.....



LOT 25 WARATAH NICE CHOICE N51

LST N51

Born: 26/08/2017 Colour: Speckled Myostatin: F Poll: PcPc Coat: ED/e Pedigree Assured: Pending

LEGACY TURNPIKE CRUISER 27T (P) (Leopard)
SIRE: CN ZPOTZ ZAZU 2Z (Speckled)
 PRAIRIE HILL NIRVANA 4N (Speckled)
 CODIAK PUTNAM GNK 61Y (P) (Leopard)
DAM: WARATAH F8 AMY K117 (ET) (P) (Speckled)
 68L PRARIE HILL AMYS GIRL F8 (ET) (Black)

Raw Data	
Birth Weight (kg)	38
Scrotal Size (cm)	35
Weight (kg)	642
P8 Fat (mm)	7
Rib Fat (mm)	5
EMA (cm ²)	102
IMF (%)	5.5



Zazu x Putnam x Lacerta

Waratah Nice Choice N51 is a sire stack that should make most beef producers sit up and take a look at!

With such a disastrous season we believe this is a bull that has not had the chance to reach his full potential, he will still fill out a lot more, a bull with later maturity.

JULY 2019 SPECKLE PARK GROUP BREEDPLAN

	Gestation Length	Birth Weight	200 Day Wt	400 Day Wt	600 Day Wt	Mat Cow Wt	Milk	Scrotal Size	Carcase Wt	Eye Muscle Area	Rib Fat	Rump Fat	Retail Beef Yield	IMF
EBV	+0.8	+1.7	+15	+22	+28	+30		+0.5	+18		-0.2	-0.3	+0.1	
<i>Acc</i>	48%	70%	55%	48%	51%	37%		35%	31%		27%	26%	25%	

Purchaser:..... \$.....

LOT 26 WARATAH NOW IT'S TIME N52

LST N52

Born: 29/08/2017 Colour: Speckled Myostatin: F Poll: PcPc Coat: ED/ED Pedigree Assured: YES

LEGACY TURNPIKE CRUISER 27T (P) (Leopard)
SIRE: CN ZPOTZ ZAZU 2Z (Speckled)
 PRAIRIE HILL NIRVANA 4N (Speckled)
 WARATAH SPECKLED GOLD G25 (ET) (Speckled)
DAM: WARATAH MELISA K102 (P) (Black)
 WARATAH MELISA G17 (ET) (P) (Speckled)

Raw Data	
Birth Weight (kg)	38
Scrotal Size (cm)	34
Weight (kg)	
P8 Fat (mm)	6
Rib Fat (mm)	4
EMA (cm ²)	93
IMF (%)	5.9



Zazu x Waratah Gold G25 x Crikey

Waratah Now It's Time N52 like his name would suggest, it's now or never as he is the last two-year-old bull offered in our 2019 sale.

A later maturing Zazu, he will still grow into a larger framed bull.

JULY 2019 SPECKLE PARK GROUP BREEDPLAN

	Gestation Length	Birth Weight	200 Day Wt	400 Day Wt	600 Day Wt	Mat Cow Wt	Milk	Scrotal Size	Carcase Wt	Eye Muscle Area	Rib Fat	Rump Fat	Retail Beef Yield	IMF
EBV	+1.5	+1.5	+9	+11	+15	+18		+0.1	+9	-0.3	-0.1	-0.2	-0.2	+0.2
<i>Acc</i>	52%	71%	59%	56%	64%	48%		63%	45%	36%	43%	43%	40%	29%

Purchaser:..... \$.....



LOT 27 WARATAH PRESTON P9

LST P9

Born: 25/07/2018 Colour: Speckled Myostatin: F Poll: PcPc Coat: ED/ED Pedigree Assured: YES

REDNECK WILD WILLY 2W (AI) (P) (Speckled)
SIRE: YOGI GOES REDNECK (Speckled)
 ASPEN ACRES LINDA LOU 10L (Speckled)

STAR BANK KING GEORGE 82U (P) (Speckled)
DAM: WARATAH SPANISH ANGEL F12 (ET) (P) (Speckled)
 RIVER HILL SPANISH ANGEL 5S (P) (Black)

Yogi x King George x Moo Fasa

Waratah Preston P9 the first of the Yogi yearlings. He is an early maturing bull, quiet in nature and out of a show winning Dam in Waratah Spanish Angel F12, who now has calves in multiple countries.

Preston is in the top 10% for Gestation Length and top 5% for Scrotal Size. Brother to lot 36.

To get a good idea how these young Yogi bulls will grow out have a look at the two-year-old Yogi sons lots 18 & 23.

Raw Data	
Birth Weight (kg)	37
Scrotal Size (cm)	30
Weight (kg)	391
P8 Fat (mm)	5
Rib Fat (mm)	3
EMA (cm ²)	76
IMF (%)	3.8



JULY 2019 SPECKLE PARK GROUP BREEDPLAN

	Gestation Length	Birth Weight	200 Day Wt	400 Day Wt	600 Day Wt	Mat Cow Wt	Milk	Scrotal Size	Carcase Wt	Eye Muscle Area	Rib Fat	Rump Fat	Retail Beef Yield	IMF
EBV	-1.5	+0.7	+12	+19	+27	+28		+0.7	+14	+0.6	+0.3	+0.4	-0.2	+0.0
Acc	44%	73%	59%	53%	55%	43%		37%	37%	26%	31%	31%	30%	25%

Purchaser:..... \$.....

LOT 28 WARATAH PAUL P3

LST P3

Born: 29/07/2018 Colour: White Myostatin: F Poll: PcPc Coat: ED/ED Pedigree Assured: YES

REDNECK WILD WILLY 2W (AI) (P) (Speckled)
SIRE: YOGI GOES REDNECK (Speckled)
 ASPEN ACRES LINDA LOU 10L (Speckled)

STAR BANK KING GEORGE 82U (P) (Speckled)
DAM: WARATAH SPANISH ANGEL F12 (ET) (P) (Speckled)
 RIVER HILL SPANISH ANGEL 5S (P) (Black)

Yogi x King George x Moo Fasa

Waratah Paul P3 the white brother to the previous lot P9.

He also displays the same characteristics of early maturity, large scrotal top 5% and short Gestation Length top 10% all profitable traits that these young bulls will pass along to your herd.

He is the heaviest of the yearling bulls on their first weights and will grow a big top line like his other half-brothers.

Being white he will colour make his offspring, they will stand out in the show ring, a great bull to breed show steers.

Raw Data	
Birth Weight (kg)	38
Scrotal Size (cm)	31
Weight (kg)	445
P8 Fat (mm)	5
Rib Fat (mm)	3
EMA (cm ²)	87
IMF (%)	3.6



JULY 2019 SPECKLE PARK GROUP BREEDPLAN

	Gestation Length	Birth Weight	200 Day Wt	400 Day Wt	600 Day Wt	Mat Cow Wt	Milk	Scrotal Size	Carcase Wt	Eye Muscle Area	Rib Fat	Rump Fat	Retail Beef Yield	IMF
EBV	-1.4	+1.0	+13	+20	+28	+29		+0.7	+15	+0.6	+0.3	+0.4	-0.2	+0.0
Acc	44%	73%	59%	53%	55%	43%		37%	37%	26%	31%	31%	30%	25%

Purchaser:..... \$.....



LOT 29 WARATAH PHIL P6

LST P6

Born: 25/07/2018 Colour: Black Myostatin: F Poll: PcPc Coat: ED/ED Pedigree Assured: YES

REDNECK WILD WILLY 2W (AI) (P) (Speckled)
SIRE: YOGI GOES REDNECK (Speckled)
 ASPEN ACRES LINDA LOU 10L (Speckled)
 CODIAK CRIKEY GNK 13U (P) (Speckled)
DAM: WARATAH MELISA G17 (ET) (P) (Speckled)
 CODIAK MELISA RKW 64M (Speckled)

Raw Data	
Birth Weight (kg)	36
Scrotal Size (cm)	30
Weight (kg)	428
P8 Fat (mm)	6
Rib Fat (mm)	4
EMA (cm ²)	82
IMF (%)	4.1



Yogi x Crikey x Styals 3K

Once again Waratah Phil P6 shows the short Gestation Length and early maturity coming from the Yogi side of the pedigree.

A nice young bull out of Waratah Melisa G17 our foundation female for the Melissa cow family at Waratah, he is a half-brother to the first two P lots and the third Yogi yearling bull.

JULY 2019 SPECKLE PARK GROUP BREEDPLAN

	Gestation Length	Birth Weight	200 Day Wt	400 Day Wt	600 Day Wt	Mat Cow Wt	Milk	Scrotal Size	Carcase Wt	Eye Muscle Area	Rib Fat	Rump Fat	Retail Beef Yield	IMF
EBV	-1.4	+0.0	+6	+11	+14	+13		+0.0	+8		+0.4	+0.5	-0.4	
<i>Acc</i>	42%	72%	57%	51%	53%	41%		36%	35%		30%	30%	28%	

Purchaser:..... \$.....

LOT 30 WARATAH PJ P163

LST P163

Born: 30/07/2018 Colour: White Myostatin: C Poll: PcPc Coat: ED/e Pedigree Assured: YES

CODIAK CALVIN GNK 58Y (White)
SIRE: JOHNER STOCK FARM CONTINENTAL 9C (P) (Speckled)
 MONNERY RIVER JFN 7X (P) (Speckled)
 HWY. 4 SPECKLE PARK 2H (Speckled)
DAM: WARATAH E27 (ET) (P) (White)
 PRAIRIE HILL AMY'S GIRL 21K (Speckled)

Raw Data	
Birth Weight (kg)	41
Scrotal Size (cm)	29
Weight (kg)	370
P8 Fat (mm)	4
Rib Fat (mm)	3
EMA (cm ²)	86
IMF (%)	3.3



Continental x Baker x Masterplan

Waratah PJ P163 is a yearling Continental son with a very different pedigree, a young bull with a massive EMA for his size and age.

Waratah PJ is in the top 5% for EMA on Breedplan.

Have a look at his two-year-old half-brother lot 20 for an idea of his potential, he is also the full brother to lot 33.

He is part of an ever growing Waratah E27 Family, he is one of her 75 registered calves.

JULY 2019 SPECKLE PARK GROUP BREEDPLAN

	Gestation Length	Birth Weight	200 Day Wt	400 Day Wt	600 Day Wt	Mat Cow Wt	Milk	Scrotal Size	Carcase Wt	Eye Muscle Area	Rib Fat	Rump Fat	Retail Beef Yield	IMF
EBV	-0.6	+1.2	+14	+21	+23	+20		-0.3	+18	+1.5	+0.3	+0.3	+0.5	-0.2
<i>Acc</i>	47%	74%	63%	63%	60%	45%		61%	47%	35%	41%	41%	39%	30%

Purchaser:..... \$.....



LOT 31 WARATAH PARKER P41

LST P41

Born: 26/07/2018 Colour: Speckled Myostatin: F Poll: PcPc Coat: ED/ED Pedigree Assured: YES

YOGI GOES REDNECK (Speckled)
SIRE: JOHNER STOCK FARM TRADE SECRET (White)
 MONNERY RIVER 7W (P) (Speckled)

WATTLE GROVE MOONSHINE E10 (ET) (White)
DAM: WARATAH F15 SPANISH ANGEL J167 (AI) (ET) (P) (Leopard)
 WARATAH SPANISH ANGEL (ET) (P) (Black)

Trade Secret x Moonshine x King George

Waratah Parker P41 has all the numbers where you want them; short gestation top 10%, smaller than average for Birth Weight top 20%, top 10% for fertility and above average in the carcass, top 25% for both Rib and P8 Fat.

His mother Spanish Angel J167 is a standout Moonshine cow who now resides in our elite flush herd!

When people come to the farm to visit, J167 will normally make it into their pictures!!

Raw Data	
Birth Weight (kg)	37
Scrotal Size (cm)	29
Weight (kg)	340
P8 Fat (mm)	4
Rib Fat (mm)	4
EMA (cm ²)	71
IMF (%)	3.5



JULY 2019 SPECKLE PARK GROUP BREEDPLAN

	Gestation Length	Birth Weight	200 Day Wt	400 Day Wt	600 Day Wt	Mat Cow Wt	Milk	Scrotal Size	Carcass Wt	Eye Muscle Area	Rib Fat	Rump Fat	Retail Beef Yield	IMF
EBV	-1.8	+0.3	+11	+18	+25	+28		+0.6	+14		+0.4	+0.5	-0.3	+0.1
Acc	37%	59%	49%	45%	46%	35%		37%	32%		%	30%	29%	25%

Purchaser:..... \$.....

LOT 32 WARATAH PETER P152

LST P152

Born: 26/07/2018 Colour: Speckled Myostatin: F Poll: PcPc Coat: ED/ED Pedigree Assured: YES

YOGI GOES REDNECK (Speckled)
SIRE: JOHNER STOCK FARM TRADE SECRET (White)
 MONNERY RIVER 7W (P) (Speckled)

WATTLE GROVE MOONSHINE E10 (ET) (White)
DAM: WARATAH PHO-FINISH J155 (AI) (ET) (P) (Speckled)
 WARATAH E23 (ET) (Black)

Trade Secret x Moonshine x John Wayne

Waratah Peter P152 is top 1% for of the breed for Gestation Length a position he shares with his half-brother lot 34 and top 15% for Birth Weight.

His mother is another one of our Moonshine cows who is an excellent example of Waratah concentrating on fertility in the herd.

Raw Data	
Birth Weight (kg)	40
Scrotal Size (cm)	29
Weight (kg)	335
P8 Fat (mm)	4
Rib Fat (mm)	3
EMA (cm ²)	68
IMF (%)	4.0



JULY 2019 SPECKLE PARK GROUP BREEDPLAN

	Gestation Length	Birth Weight	200 Day Wt	400 Day Wt	600 Day Wt	Mat Cow Wt	Milk	Scrotal Size	Carcass Wt	Eye Muscle Area	Rib Fat	Rump Fat	Retail Beef Yield	IMF
EBV	-2.1	+0.1	+12	+17	+24	+25		+0.0	+14	+0.2	+0.2	+0.3	-0.2	+0.1
Acc	43%	73%	62%	62%	59%	44%		63%	47%	37%	44%	44%	42%	33%

Purchaser:..... \$.....



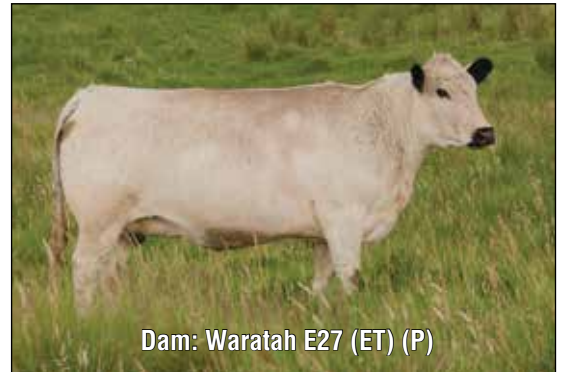
LOT 33 WARATAH PAT P171

LST P171

Born: 27/07/2018 Colour: White Myostatin: F Poll: PcPc Coat: ED/e Pedigree Assured: YES

CODIAK CALVIN GNK 58Y (White)
SIRE: JOHNER STOCK FARM CONTINENTAL 9C (P) (Speckled)
 MONNERY RIVER JFN 7X (P) (Speckled)
 HWY. 4 SPECKLE PARK 2H (Speckled)
DAM: WARATAH E27 (ET) (P) (White)
 PRAIRIE HILL AMY'S GIRL 21K (Speckled)

Raw Data	
Birth Weight (kg)	39
Scrotal Size (cm)	30
Weight (kg)	334
P8 Fat (mm)	3
Rib Fat (mm)	3
EMA (cm ²)	64
IMF (%)	3.7



Continental x Baker x Masterplan

Waratah Pat P171 is part of the proven Amy cow family here at Waratah and one of Waratah E27's 75 registered calves. Fertility is epitomized with a cow like E27!

JULY 2019 SPECKLE PARK GROUP BREEDPLAN

	Gestation Length	Birth Weight	200 Day Wt	400 Day Wt	600 Day Wt	Mat Cow Wt	Milk	Scrotal Size	Carcase Wt	Eye Muscle Area	Rib Fat	Rump Fat	Retail Beef Yield	IMF
EBV	-0.6	+0.5	+9	+12	+13	+12		+0.3	+7	-0.1	+0.2	+0.2	-0.2	+0.0
<i>Acc</i>	47%	74%	63%	63%	60%	45%		61%	47%	35%	41%	41%	39%	30%

Purchaser: \$.....

LOT 34 WARATAH PERRY P75

LST P75

Born: 3/08/2018 Colour: Speckled Myostatin: F Poll: PcPc Coat: ED/ED Pedigree Assured: YES

YOGI GOES REDNECK (Speckled)
SIRE: JOHNER STOCK FARM TRADE SECRET (White)
 MONNERY RIVER 7W (P) (Speckled)
 WATTLE GROVE MOONSHINE E10 (ET) (White)
DAM: WARATAH F15 SPANISH ANGEL J167 (AI) (ET) (P) (Leopard)
 WARATAH SPANISH ANGEL (ET) (P) (Black)

Raw Data	
Birth Weight (kg)	37
Scrotal Size (cm)	30
Weight (kg)	334
P8 Fat (mm)	4
Rib Fat (mm)	3
EMA (cm ²)	69
IMF (%)	3.6



Trade Secret x Moonshine x King George

Waratah Perry P75 shares a top 1% for Gestation Length in the Speckle Park breed with lot 32. Perry P75 is the last of the yearling bulls in this year's sale line up.

JULY 2019 SPECKLE PARK GROUP BREEDPLAN

	Gestation Length	Birth Weight	200 Day Wt	400 Day Wt	600 Day Wt	Mat Cow Wt	Milk	Scrotal Size	Carcase Wt	Eye Muscle Area	Rib Fat	Rump Fat	Retail Beef Yield	IMF
EBV	-2.1	-0.5	+8	+15	+21	+24		+0.5	+13		+0.4	+0.5	-0.3	+0.1
<i>Acc</i>	41%	73%	58%	51%	53%	39%		37%	34%		30%	30%	29%	25%

Purchaser: \$.....



LOT 35 WARATAH WENDY P5

LST P5

Born: 24/07/2018 Colour: White Myostatin: F Poll: HPC Coat: ED/ED Pedigree Assured: YES

LEGACY UNRIVALED 12U (P) (Speckled)
SIRE: CODIAK AMIGO GNK 65Y (P) (White)
 CODIAK GNK 24T (P) (Leopard)

HEARTRIDGE ARIES 01W (P) (Speckled)
DAM: WARATAH WENDY K69 (ET) (P) (White)
 PONDEROSA WENDY 02W (P) (Leopard)

Amigo x Aries x Big Ben Waratah

Wendy P5 is from the now proven sire Amigo, his heifers are good mothers with ample milk supply and like all the Amigo females she is a thick set early maturing heifer. Wendy P5 has a slightly different pedigree with her mum being by Heartridge Aries.



Sire: Codiak Amigo GNK 65Y (P)

JUNE 2019 SPECKLE PARK GROUP BREEDPLAN

	Gestation Length	Birth Weight	200 Day Wt	400 Day Wt	600 Day Wt	Mat Cow Wt	Milk	Scrotal Size	Carcase Wt	Eye Muscle Area	Rib Fat	Rump Fat	Retail Beef Yield	IMF
EBV	+0.4	+1.9	+12	+17	+23	+23								
Acc	37%	71%	54%	46%	48%	34%								

Purchaser:..... \$.....

LOT 36 WARATAH SPANISH ANGEL P70

LST P70

Born: 26/07/2018 Colour: Leopard Myostatin: F Poll: PcPc Coat: ED/e Pedigree Assured: YES

YOGI GOES REDNECK (Speckled)
SIRE: JOHNER STOCK FARM TRADE SECRET (White)
 MONNERY RIVER 7W (P) (Speckled)

WATTLE GROVE MOONSHINE E10 (ET) (White)
DAM: WARATAH F15 SPANISH ANGEL J167 (AI) (ET) (P) (Leopard)
 WARATAH SPANISH ANGEL (ET) (P) (Black)

Trade Secret x Moonshine x King George

Waratah Spanish Angel P70 is one of the older heifers in this year's sale and she is well grown. Her full sister recently sold to Tasmania as a show heifer to a young breeder, other heifers by Trade Secret have done extremely well in the show ring with Waratah producing some winning females at Beef 2018.



Dam: Waratah F15 Spanish Angel J167 (AI) (ET) (P)

JUNE 2019 SPECKLE PARK GROUP BREEDPLAN

	Gestation Length	Birth Weight	200 Day Wt	400 Day Wt	600 Day Wt	Mat Cow Wt	Milk	Scrotal Size	Carcase Wt	Eye Muscle Area	Rib Fat	Rump Fat	Retail Beef Yield	IMF
EBV	-1.9	+0.1	+11	+17	+24	+27		+0.5	+14		+0.4	+0.5	-0.3	+0.1
Acc	41%	73%	58%	51%	53%	39%		37%	34%		30%	30%	29%	25%

Purchaser:..... \$.....

LOT 37 WARATAH WENDY P24

LST P24

Born: 29/07/2018 Colour: Leopard Myostatin: F Poll: HPC Coat: ED/ED Pedigree Assured: YES

CODIAK CALVIN GNK 58Y (White)
SIRE: JOHNER STOCK FARM CONTINENTAL 9C (P) (Speckled)
 MONNERY RIVER JFN 7X (P) (Speckled)

HEARTRIDGE ARIES 01W (P) (Speckled)
DAM: WARATAH WENDY K69 (ET) (P) (White)
 PONDEROSA WENDY 02W (P) (Leopard)

Continental x Aries x Big Ben

Waratah Wendy P24 is the second of our Waratah Wendy K69 daughters for sale. Her mum K69 has been a regular in the flush program at Waratah over the last few years. K69 is a moderate framed cow that produced a sappy calf every year till she became a donor cow. K69 will have calves registered both here and in New Zealand this year. By JSF Continental 9C she is again a bit different in her pedigree on both the sire and dam sides to most other Speckle Parks in Australia.



Dam: Waratah Wendy K69 (ET) (P)

JUNE 2019 SPECKLE PARK GROUP BREEDPLAN

	Gestation Length	Birth Weight	200 Day Wt	400 Day Wt	600 Day Wt	Mat Cow Wt	Milk	Scrotal Size	Carcase Wt	Eye Muscle Area	Rib Fat	Rump Fat	Retail Beef Yield	IMF
EBV	-0.2	+0.8	+9	+13	+17	+16		+0.1	+10					
Acc	38%	71%	53%	46%	48%	34%		26%	26%					

Purchaser:..... \$.....



LOT 38 WARATAH EMBER P46

LST P46

Born: 7/08/2018 Colour: White Myostatin: F Poll: PcPc Coat: ED/ED Pedigree Assured: YES

YOGI GOES REDNECK (Speckled)

SIRE: JOHNER STOCK FARM TRADE SECRET (White)

MONNERY RIVER 7W (P) (Speckled)

P.A.R. PAPA RAZZI 6P (Speckled)

DAM: WARATAH EMBER J185 (AI) (ET) (P) (White)

WARATAH EMBER E26 (ET)

Trade Secret x Papa Razzi x Samson

Now this is a heifer not to be missed, she is a full sister to the high selling bull from our 2018 sale, Waratah M&M M9 who sold to Minnamurra Speckle Parks for \$20 000. This heifer has loads of potential and she too will produce some great sale animals in her future just like her dam Waratah Ember J185.



Dam: Waratah Ember J185 (AI) (ET) (P)

JUNE 2019 SPECKLE PARK GROUP BREEDPLAN

	Gestation Length	Birth Weight	200 Day Wt	400 Day Wt	600 Day Wt	Mat Cow Wt	Milk	Scrotal Size	Carcase Wt	Eye Muscle Area	Rib Fat	Rump Fat	Retail Beef Yield	IMF
EBV	-2.4	-1.4	+4	+10	+14	+16		+0.4	+10		+0.3	+0.3	-0.3	
Acc	40%	72%	57%	50%	52%	37%		34%	31%		27%	27%	25%	

Purchaser:..... \$.....

LOT 39 WARATAH EMBER P162

LST P162

Born: 5/08/2018 Colour: Speckled Myostatin: F Poll: PcPc Coat: ED/ED Pedigree Assured: YES

A & W 15R (P) (Leopard)

SIRE: HS UNTAPPED 3A (Speckled)

NOTTA 2R PRETENDER 4T (P) (Speckled)

CODIAK AMIGO GNK 65Y (P) (White)

DAM: WARATAH EMBER L511 (ET) (P) (Speckled)

WARATAH EMBER E26 (ET)

Untapped x Amigo x Samson

This heifer is in the top 15% for birth weight on Breedplan, she comes from a strong fertile cow family. Her grand dam is the foundation cow of the Ember family at Waratah. She has over 30 registered offspring and her dam Waratah Ember L511 was chosen for a flush program as a first calf heifer for New Zealand, after she raised such an outstanding first calf in Nemo N39. Sister to lots 41 & 44.



Dam: Waratah Ember L511 (ET) (P)

JUNE 2019 SPECKLE PARK GROUP BREEDPLAN

	Gestation Length	Birth Weight	200 Day Wt	400 Day Wt	600 Day Wt	Mat Cow Wt	Milk	Scrotal Size	Carcase Wt	Eye Muscle Area	Rib Fat	Rump Fat	Retail Beef Yield	IMF
EBV	+0.3	+0.2	+3	+7	+14	+15		+0.2	+8		+0.1	+0.0	+0.0	
Acc	44%	72%	58%	51%	53%	39%		31%	34%		27%	27%	25%	

Purchaser:..... \$.....

LOT 40 WARATAH EMBER P170

LST P170

Born: 25/09/2018 Colour: Leopard Myostatin: F Poll: PcPc Coat: ED/ED Pedigree Assured: YES

CODIAK OSCAR GNK 8S (P) (Leopard)

SIRE: CODIAK SPENCER GNK 52B (P) (Leopard)

CODIAK WILLA GNK 13W (P) (Speckled)

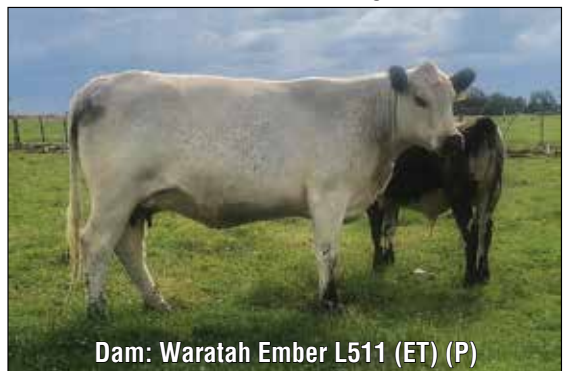
CODIAK AMIGO GNK 65Y (P) (White)

DAM: WARATAH EMBER L511 (ET) (P) (Speckled)

WARATAH EMBER E26 (ET)

Spencer x Amigo x Samson

Waratah Ember P170 is our first Codiak Spencer heifer to be offered for sale at Waratah, these are new genetics not to be missed! Again from our fertile Ember family who flush like toilets and she has a full sister selling as lot 54.



Dam: Waratah Ember L511 (ET) (P)

JUNE 2019 SPECKLE PARK GROUP BREEDPLAN

	Gestation Length	Birth Weight	200 Day Wt	400 Day Wt	600 Day Wt	Mat Cow Wt	Milk	Scrotal Size	Carcase Wt	Eye Muscle Area	Rib Fat	Rump Fat	Retail Beef Yield	IMF
EBV	+0.3	+0.6	+6	+9	+10	+9		+0.2	+6					
Acc	39%	72%	58%	50%	52%	38%		30%	33%					

Purchaser:..... \$.....



LOT 41 WARATAH EMBER P151

LST P151

Born: 1/08/2018 Colour: White Myostatin: F Poll: PcPc Coat: ED/ED Pedigree Assured: YES

A & W 15R (P) (Leopard)

SIRE: HS UNTAPPED 3A (Speckled)

NOTTA 2R PRETENDER 4T (P) (Speckled)

CODIAK AMIGO GNK 65Y (P) (White)

DAM: WARATAH EMBER L511 (ET) (P) (Speckled)

WARATAH EMBER E26 (ET)

Untapped x Amigo x Samson

Another chance to get an Untapped heifer, Waratah Ember P151 is a well muscled deep bodied female. Again coming from a strong and fertile family with Waratah Ember L511 as her mother. Sister to lots 39 & 44.



Sire: HS Untapped 3A

JUNE 2019 SPECKLE PARK GROUP BREEDPLAN

	Gestation Length	Birth Weight	200 Day Wt	400 Day Wt	600 Day Wt	Mat Cow Wt	Milk	Scrotal Size	Carcase Wt	Eye Muscle Area	Rib Fat	Rump Fat	Retail Beef Yield	IMF
EBV	+0.4	+0.4	+4	+8	+15	+16		+0.2	+9		+0.1	+0.0	+0.0	
Acc	44%	72%	58%	51%	53%	39%		31%	34%		27%	27%	25%	

Purchaser: \$.....

LOT 42 WARATAH GINA P105

LST P105

Born: 11/08/2018 Colour: White Myostatin: F Poll: PcPc Coat: ED/ED Pedigree Assured: YES

LEGACY TURNPIKE CRUISER 27T (P) (Leopard)

SIRE: CN ZPOTZ ZAZU 2Z (Speckled)

PRAIRIE HILL NIRVANA 4N (Speckled)

STAR BANK KING GEORGE 82U (P) (Speckled)

DAM: WARATAH GINA J71 (AI) (ET) (Speckled) (TW)

WATTLE GROVE 26T GINA 68G G8 (ET) (Speckled)

Zazu x King George x Crikey

Waratah Gina P105 also comes from a very consistent maternal cow family. Her dam Waratah Gina J71 has produced a calf every year. The past four years, 3 out of the four have been to AI. She will be the only Gina in the sale today and the only female by Zazu. P105 will grow into a larger framed cow, have a look at her two half-brothers lots 4 & 5, to show her full potential.



Sire: CN Zpotz Zazu 2Z

JUNE 2019 SPECKLE PARK GROUP BREEDPLAN

	Gestation Length	Birth Weight	200 Day Wt	400 Day Wt	600 Day Wt	Mat Cow Wt	Milk	Scrotal Size	Carcase Wt	Eye Muscle Area	Rib Fat	Rump Fat	Retail Beef Yield	IMF
EBV	+1.2	+2.1	+13	+18	+26	+31		+0.7	+13		+0.3	+0.3	-0.2	
Acc	40%	66%	52%	46%	49%	37%		33%	31%		27%	27%	26%	

Purchaser: \$.....

LOT 43 WARATAH PHO-FINISH P146

LST P146

Born: 27/07/2018 Colour: White Myostatin: F Poll: HPC Coat: ED/ED Pedigree Assured: YES

YOGI GOES REDNECK (Speckled)

SIRE: JOHNER STOCK FARM TRADE SECRET (White)

MONNERY RIVER 7W (P) (Speckled)

WATTLE GROVE MOONSHINE E10 (ET) (White)

DAM: WARATAH PHO-FINISH J155 (AI) (ET) (P) (Speckled)

WARATAH E23 (ET) (Black)



Sire: Johner Stock Farm Trade Secret

JUNE 2019 SPECKLE PARK

	Gestation Length	Birth Weight	200 Day Wt	400 Day Wt	600 Day Wt	Mat Cow Wt	Milk	Scrotal Size	Carcase Wt	Eye Muscle Area	Rib Fat	Rump Fat	Retail Beef Yield	IMF
EBV	-2.0	+0.6	+15	+21	+29	+29		+0.2	+17	+0.4	+0.1	+0.1	-0.1	+0.1
Acc	43%	74%	59%	53%	55%	41%		41%	36%	26%	32%	32%	31%	26%

Purchaser: \$.....

WITHDRAWN



LOT 44 WARATAH EMBER P159

LST P159

Born: 4/08/2018 **Colour:** Speckled **Myostatin:** F **Poll:** PcPc **Coat:** ED/ED **Pedigree Assured:** YES

A & W 15R (P) (Leopard)

SIRE: HS UNTAPPED 3A (Speckled)

NOTTA 2R PRETENDER 4T (P) (Speckled)

CODIAK AMIGO GNK 65Y (P) (White)

DAM: WARATAH EMBER L511 (ET) (P) (Speckled)

WARATAH EMBER E26 (ET)

Untapped x Amigo x Samson

Waratah Ember P159 is the last of the Untapped/Ember heifers. She is such a quiet heifer and sister to lots 39 & 41.



Sire: HS Untapped 3A

JUNE 2019 SPECKLE PARK GROUP BREEDPLAN

	Gestation Length	Birth Weight	200 Day Wt	400 Day Wt	600 Day Wt	Mat Cow Wt	Milk	Scrotal Size	Carcase Wt	Eye Muscle Area	Rib Fat	Rump Fat	Retail Beef Yield	IMF
EBV	+0.6	+0.8	+6	+10	+17	+18		+0.3	+9		+0.1	+0.0	+0.0	
Acc	44%	72%	58%	51%	53%	39%		31%	34%		27%	27%	25%	

Purchaser:..... \$.....

LOT 45 WARATAH AMY P130

LST P130

Born: 28/07/2018 **Colour:** White **Myostatin:** F **Poll:** PcPc **Coat:** ED/ED **Pedigree Assured:** YES

CODIAK CALVIN GNK 58Y (White)

SIRE: JOHNER STOCK FARM CONTINENTAL 9C (P) (Speckled)

MONNERY RIVER JFN 7X (P) (Speckled)

HWY. 4 SPECKLE PARK 2H (Speckled)

DAM: WARATAH E27 (ET) (P) (White)

PRAIRIE HILL AMY'S GIRL 21K (Speckled)

Continental x Baker x Masterplan

This Amy is a sound structured no nonsense female from one of the most proven cow family in Australia! Being a Continental straight out of E27 makes this heifer a valuable investment. This heifer presents a unique opportunity to someone wanting to dip their toe in the Speckle Park pool!! Sister to lots 31, 33 and 47.



Dam: Waratah E27 (ET) (P)

JUNE 2019 SPECKLE PARK GROUP BREEDPLAN

	Gestation Length	Birth Weight	200 Day Wt	400 Day Wt	600 Day Wt	Mat Cow Wt	Milk	Scrotal Size	Carcase Wt	Eye Muscle Area	Rib Fat	Rump Fat	Retail Beef Yield	IMF
EBV	-0.6	+0.8	+11	+15	+16	+14		-0.1	+11		+0.3	+0.3	+0.0	
Acc	46%	75%	61%	54%	56%	42%		37%	36%		27%	27%	26%	

Purchaser:..... \$.....

LOT 46 WARATAH URSULA P197

LST P197

Born: 17/09/2018 **Colour:** Speckled **Myostatin:** F **Poll:** PcPc **Coat:** ED/ED **Pedigree Assured:** YES

CODIAK OSCAR GNK 8S (P) (Leopard)

SIRE: CODIAK SPENCER GNK 52B (P) (Leopard)

CODIAK WILLA GNK 13W (P) (Speckled)

REDNECK RANCH'S SAM 7S (P) (Speckled)

DAM: REDNECK RANCH'S URSULA 7U (P) (Speckled)

REDNECK RANCH'S SALLY 2S (P) (Speckled)

Spencer x Sam 7S x Moofasa

Here is a heifer to invest in, she is about as new and trendy as you can get in the Speckle job. Waratah Ursula is the first Redneck Ranch Ursula female to be offered for sale outside of Canada. P197 will be the only Ursula female for sale this year as we are retaining the rest of her Spencer sisters. Waratah is giving you a fantastic chance to get some new genetics into your Speckle Park breeding program.



Dam: Redneck Ranch's Ursula 7U (P)

JUNE 2019 SPECKLE PARK GROUP BREEDPLAN

	Gestation Length	Birth Weight	200 Day Wt	400 Day Wt	600 Day Wt	Mat Cow Wt	Milk	Scrotal Size	Carcase Wt	Eye Muscle Area	Rib Fat	Rump Fat	Retail Beef Yield	IMF
EBV	-0.4	+0.1	+7	+10	+10	+10		+0.2	+7					
Acc	38%	72%	60%	50%	51%	37%		25%	33%					

Purchaser:..... \$.....



LOT 47 WARATAH AMY P127

LST P127

Born: 28/07/2018 Colour: White Myostatin: C Poll: PcPc Coat: ED/e Pedigree Assured: YES

CODIAK CALVIN GNK 58Y (White)

SIRE: **JOHNER STOCK FARM CONTINENTAL 9C (P) (Speckled)**

MONNERY RIVER JFN 7X (P) (Speckled)

HWY. 4 SPECKLE PARK 2H (Speckled)

DAM: **WARATAH E27 (ET) (P) (White)**

PRAIRIE HILL AMY'S GIRL 21K (Speckled)

Continental x Baker x Masterplan

Waratah Amy P127 is a sound structured no nonsense female from one of the most proven cow family in Australia! Being a Continental straight out of E27 makes this heifer a valuable investment. Sound familiar, well it's because she's a sister to lots 31, 33, and 45!!



Dam: Waratah E27 (ET) (P)

JUNE 2019 SPECKLE PARK GROUP BREEDPLAN

	Gestation Length	Birth Weight	200 Day Wt	400 Day Wt	600 Day Wt	Mat Cow Wt	Milk	Scrotal Size	Carcase Wt	Eye Muscle Area	Rib Fat	Rump Fat	Retail Beef Yield	IMF
EBV	-0.6	+0.8	+11	+15	+16	+14		-0.1	+11		+0.3	+0.3	+0.0	
Acc	46%	75%	61%	54%	56%	42%		37%	36%		27%	27%	26%	

Purchaser:..... \$.....

LOT 48 WARATAH PHO-FINSH P65

LST P65

Born: 3/08/2018 Colour: Speckled Myostatin: F Poll: PcPc Coat: ED/ED Pedigree Assured: YES

LEGACY UNRIVALED 12U (P) (Speckled)

SIRE: **CODIAK AMIGO GNK 65Y (P) (White)**

CODIAK GNK 24T (P) (Leopard)

JOHNER STOCK FARM TRADE SECRET (White)

DAM: **WARATAH PHO FINISH M132 (AI) (ET) (P) (Speckled)**

WARATAH E23 (ET) (Black)

Amigo x Trade Secret x John Wayne

Waratah Pho-finish P65 is a heifers first calf, she shows the same kind and friendly nature that all the Amigo daughters display. Waratah E23 is the granddam of this heifer and her fertility shines through even to the Breedplan numbers.



Sire: Codiak Amigo GNK 65Y (P)

JUNE 2019 SPECKLE PARK GROUP BREEDPLAN

	Gestation Length	Birth Weight	200 Day Wt	400 Day Wt	600 Day Wt	Mat Cow Wt	Milk	Scrotal Size	Carcase Wt	Eye Muscle Area	Rib Fat	Rump Fat	Retail Beef Yield	IMF
EBV	-0.7	+0.9	+12	+17	+24	+23		+0.5	+13					
Acc	39%	71%	55%	47%	50%	36%		29%	29%					

Purchaser:..... \$.....

LOT 49 WARATAH AMY P190

LST P190

Born: 19/09/2018 Colour: Speckled Myostatin: C Poll: PcPc Coat: ED/ED Pedigree Assured: YES

CODIAK OSCAR GNK 8S (P) (Leopard)

SIRE: **CODIAK SPENCER GNK 52B (P) (Leopard)**

CODIAK WILLA GNK 13W (P) (Speckled)

WARATAH FLASH (ET) (White)

DAM: **WARATAH E25 AMY K144 (ET) (P) (Speckled)**

WARATAH E25 (ET) (P) (Black)

Spencer x Flash F7 x Traffic Jam

Waratah Amy P190 is the first of four sisters by Codiak Spencer out of Waratah Amy K144, a moderate framed easy doing female who is in the Waratah export flush program. K144 has produced embryos both for Australia, New Zealand and the European Union. Amy P190's sire Spencer, goes back to Codiak Oscar one of the longest Speckle Park bulls Laiton has ever seen in Canada. Sister to lots 52, 61 and 62.



Dam: Waratah E25 Amy K144 (ET) (P)

JUNE 2019 SPECKLE PARK GROUP BREEDPLAN

	Gestation Length	Birth Weight	200 Day Wt	400 Day Wt	600 Day Wt	Mat Cow Wt	Milk	Scrotal Size	Carcase Wt	Eye Muscle Area	Rib Fat	Rump Fat	Retail Beef Yield	IMF
EBV	+0.2	+0.9	+10	+12	+12	+11		+0.0	+9					
Acc	40%	72%	59%	51%	52%	39%		29%	35%					

Purchaser:..... \$.....



LOT 50 WARATAH AMY P135

LST P135

Born: 20/10/2018 Colour: Speckled Myostatin: F Poll: PcPc Coat: ED/ED Pedigree Assured: YES

SIX STAR 82U ROYAL FLESH 101Y (AI) (ET) (P) (Speckled)

SIRE: MINNAMURRA LANCELOT L14 (AI) (P) (White)

SIX STAR 13U PENELOPE G29 (AI) (ET) (P) (White)

WARATAH J30 (AI) (ET) (P) (White)

DAM: WARATAH E25 AMY L82 (ET) (Speckled)

WARATAH E25 (ET) (P) (Black)

Lancelot x Waratah J30 x Baker

This Lancelot L14 daughter is as wide as she is long, kind of like a brick with legs!! She is a curious and quiet heifer from our E25 cow family and is sure to make an awesome cow.



Dam: Waratah E25 Amy L82 (ET)

JUNE 2019 SPECKLE PARK GROUP BREEDPLAN

	Gestation Length	Birth Weight	200 Day Wt	400 Day Wt	600 Day Wt	Mat Cow Wt	Milk	Scrotal Size	Carcase Wt	Eye Muscle Area	Rib Fat	Rump Fat	Retail Beef Yield	IMF
EBV	+0.0	+1.1	+10	+14	+17	+16		+0.0	+12		+0.1	+0.1		
Acc	36%	54%	45%	41%	43%	34%		30%	30%		25%	25%		

Purchaser:..... \$.....

LOT 51 WARATAH TEEKA P122

LST P122

Born: 9/10/2018 Colour: White Myostatin: F Poll: PcPc Coat: ED/ED Pedigree Assured: YES

SIX STAR 82U ROYAL FLESH 101Y (AI) (ET) (P) (Speckled)

SIRE: MINNAMURRA LANCELOT L14 (AI) (P) (White)

SIX STAR 13U PENELOPE G29 (AI) (ET) (P) (White)

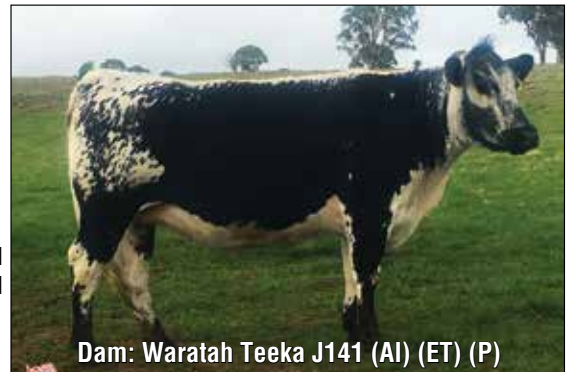
WATTLE GROVE ALMIGHTY E41 (ET) (Speckled)

DAM: WARATAH TEEKA J141 (AI) (ET) (P) (Speckled)

WATTLE GROVE 50S TEEKA G23 (ET) (Speckled)

Lancelot x Almighty x John Wayne

This is the first of two heifers from the Teeka cow family, you've got some huge names behind this heifer. She is by Minnamurra Lancelot L14 out of Waratah Teeka J141 who is a big framed cow currently in the export flushing centre.



Dam: Waratah Teeka J141 (AI) (ET) (P)

JUNE 2019 SPECKLE PARK GROUP BREEDPLAN

	Gestation Length	Birth Weight	200 Day Wt	400 Day Wt	600 Day Wt	Mat Cow Wt	Milk	Scrotal Size	Carcase Wt	Eye Muscle Area	Rib Fat	Rump Fat	Retail Beef Yield	IMF
EBV	+0.1	+1.9	+15	+20	+27	+26		+0.3	+16		-0.1	-0.1	+0.4	
Acc	41%	67%	54%	48%	51%	39%		33%	33%		29%	28%	27%	

Purchaser:..... \$.....

LOT 52 WARATAH AMY P193

LST P193

Born: 18/09/2018 Colour: White Myostatin: F Poll: PcPc Coat: ED/ED Pedigree Assured: YES

CODIAK OSCAR GNK 8S (P) (Leopard)

SIRE: CODIAK SPENCER GNK 52B (P) (Leopard)

CODIAK WILLA GNK 13W (P) (Speckled)

WARATAH FLASH (ET) (White)

DAM: WARATAH E25 AMY K144 (ET) (P) (Speckled)

WARATAH E25 (ET) (P) (Black)

Spencer x Flash F7 x Traffic Jam

Waratah Amy P193 is the second of the four Spencer/K144 sisters. Sister to lots 49, 61 & 62.



Sire: Codiak Spencer GNK 52B (P)

JUNE 2019 SPECKLE PARK GROUP BREEDPLAN

	Gestation Length	Birth Weight	200 Day Wt	400 Day Wt	600 Day Wt	Mat Cow Wt	Milk	Scrotal Size	Carcase Wt	Eye Muscle Area	Rib Fat	Rump Fat	Retail Beef Yield	IMF
EBV	+0.2	+0.9	+10	+12	+12	+11		+0.0	+9					
Acc	40%	72%	59%	51%	52%	39%		29%	35%					

Purchaser:..... \$.....



LOT 53 WARATAH TEEKA P55

LST P55

Born: 7/08/2018 Colour: Black Myostatin: F Poll: PcPc Coat: ED/ED Pedigree Assured: YES

REDNECK WILD WILLY 2W (AI) (P) (Speckled)

SIRE: YOGI GOES REDNECK (Speckled)

ASPEN ACRES LINDA LOU 10L (Speckled)

WARATAH WILLIS G12 (ET) (White)

DAM: WARATAH TEEKA M129 (AI) (P) (Speckled)

WARATAH WARATAH TEEKA J107 (AI) (ET) (P) (Speckled)

Yogi x Willis x King George

Waratah Teeka P55 is the last Teeka in the sale offering this year. Teeka P55 is an outstanding heifers first calf, look past her black coat to see her thickness and solid bone structure, she looks good on paper too! Check out her Breedplan figures.



Sire: Yogi Goes Redneck

JUNE 2019 SPECKLE PARK GROUP BREEDPLAN

	Gestation Length	Birth Weight	200 Day Wt	400 Day Wt	600 Day Wt	Mat Cow Wt	Milk	Scrotal Size	Carcase Wt	Eye Muscle Area	Rib Fat	Rump Fat	Retail Beef Yield	IMF
EBV	-1.4	+1.4	+17	+28	+36	+36		+0.5	+21		+0.3	+0.3	-0.1	
Acc	40%	71%	55%	48%	51%	38%		35%	32%		27%	27%	26%	

Purchaser:..... \$.....

LOT 54 WARATAH EMBER P178

LST P178

Born: 22/09/2018 Colour: White Myostatin: F Poll: PcPc Coat: ED/ED Pedigree Assured: YES

CODIAK OSCAR GNK 8S (P) (Leopard)

SIRE: CODIAK SPENCER GNK 52B (P) (Leopard)

CODIAK WILLA GNK 13W (P) (Speckled)

CODIAK AMIGO GNK 65Y (P) (White)

DAM: WARATAH EMBER L511 (ET) (P) (Speckled)

WARATAH EMBER E26 (ET)

Spencer x Amigo x Samson

Waratah Ember P178 is a Spencer daughter out of the Ember cow family. Her sister is lot 40, out of a great milking Dam.



Sire: Codiak Spencer GNK 52B (P)

JUNE 2019 SPECKLE PARK GROUP BREEDPLAN

	Gestation Length	Birth Weight	200 Day Wt	400 Day Wt	600 Day Wt	Mat Cow Wt	Milk	Scrotal Size	Carcase Wt	Eye Muscle Area	Rib Fat	Rump Fat	Retail Beef Yield	IMF
EBV	+0.4	+0.8	+7	+10	+11	+11		+0.3	+6					
Acc	39%	72%	58%	50%	52%	38%		30%	33%					

Purchaser:..... \$.....

LOT 55 WARATAH AMY P121

LST P121

Born: 17/09/2018 Colour: White Myostatin: Poll: Coat: Pedigree Assured:

SIX STAR 82U ROYAL FLESH 101Y (AI) (ET) (P) (Speckled)

SIRE: MINNAMURRA LANCELOT L14 (AI) (P) (White)

SIX STAR 13U PENELOPE G29 (AI) (ET) (P) (White)

A & W 15R (P) (Leopard)

DAM: WARATAH E25 AMY J15 (AI) (ET) (Speckled) (TW)

WARATAH E25 (ET) (P) (Black)

WITHDRAWN



Sire: Minnamurra Lancelot L14 (AI) (P)

JUNE 2019 SPECKLE PARK GROUP BREEDPLAN

	Gestation Length	Birth Weight	200 Day Wt	400 Day Wt	600 Day Wt	Mat Cow Wt	Milk	Scrotal Size	Carcase Wt	Eye Muscle Area	Rib Fat	Rump Fat	Retail Beef Yield	IMF
EBV														
Acc														

Purchaser:..... \$.....



LOT 56 WARATAH SPANISH ANGEL P50

LST P50

Born: 3/08/2018 Colour: Speckled Myostatin: F Poll: PcPc Coat: ED/ED Pedigree Assured: YES

REDNECK WILD WILLY 2W (AI) (P) (Speckled)

SIRE: YOGI GOES REDNECK (Speckled)

ASPEN ACRES LINDA LOU 10L (Speckled)

ASPEN ACRES T.N.T. 4Y (Speckled)

DAM: WARATAH AMY M118 (AI) (ET) (Black)

WARATAH E27 AMY J83 (AI) (ET) (Speckled)

Yogi x TNT x Pretender

Waratah Spanish Angel P50 is a heifers first calf and being by Yogi she has great Breedplan numbers for Gestation Length and Birth Weight in the top 5% for both. A nice dainty heifer which should breed you some great heifer bulls.



Sire: Yogi Goes Redneck

JUNE 2019 SPECKLE PARK GROUP BREEDPLAN

	Gestation Length	Birth Weight	200 Day Wt	400 Day Wt	600 Day Wt	Mat Cow Wt	Milk	Scrotal Size	Carcase Wt	Eye Muscle Area	Rib Fat	Rump Fat	Retail Beef Yield	IMF
EBV	-2.0	-1.0	+6	+13	+15	+14		+0.3	+11		+0.3	+0.4		
Acc	40%	70%	54%	48%	50%	38%		34%	31%		26%	26%		

Purchaser: \$.....

LOT 57 WARATAH WENDY P120

LST P120

Born: 24/09/2018 Colour: White Myostatin: F Poll: PcPc Coat: ED/ED Pedigree Assured: YES

SIX STAR 82U ROYAL FLESH 101Y (AI) (ET) (P) (Speckled)

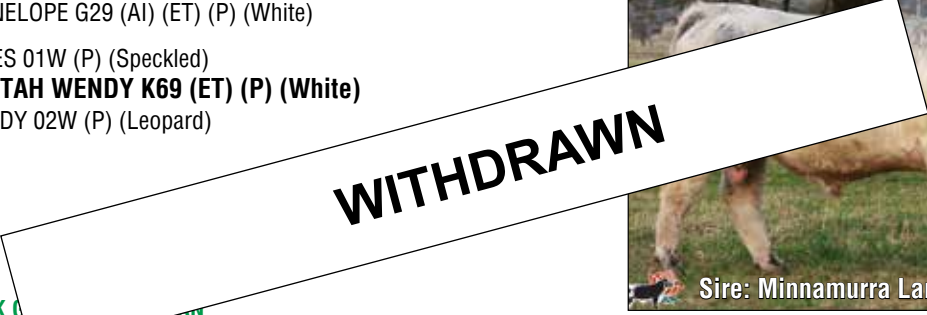
SIRE: MINNAMURRA LANCELOT L14 (AI) (P) (White)

SIX STAR 13U PENELOPE G29 (AI) (ET) (P) (White)

HEARTRIDGE ARIES 01W (P) (Speckled)

DAM: WARATAH WARATAH WENDY K69 (ET) (P) (White)

PONDEROSA WENDY 02W (P) (Leopard)



Sire: Minnamurra Lancelot L14 (AI) (P)

JUNE 2019 SPECKLE PARK GROUP BREEDPLAN

	Gestation Length	Birth Weight	200 Day Wt	400 Day Wt	600 Day Wt	Mat Cow Wt	Milk	Scrotal Size	Carcase Wt	Eye Muscle Area	Rib Fat	Rump Fat	Retail Beef Yield	IMF
EBV	+0.1	+1.1	+9	+13	+17	+17		+0.1	+11					
Acc	37%	65%	51%	44%	47%	35%		27%	28%					

Purchaser: \$.....

LOT 58 WARATAH PHO-FINISH P131

LST P131

Born: 15/10/2018 Colour: Speckled Myostatin: F Poll: PcPc Coat: ED/ED Pedigree Assured: YES

SIX STAR 82U ROYAL FLESH 101Y (AI) (ET) (P) (Speckled)

SIRE: MINNAMURRA LANCELOT L14 (AI) (P) (White)

SIX STAR 13U PENELOPE G29 (AI) (ET) (P) (White)

PRAIRIE HILL JOHN WAYNE 50S (P) (Speckled)

DAM: WARATAH E23 (ET) (Black)

NOTTA PHO-FINISH 54P (Speckled)

Lancelot x John Wayne x Lacerta

Waratah Pho-Finish P131 is the natural calf of Waratah E23, the foundation cow of the Waratah Pho-Finish family. This heifer displays the same body shape and type of the Lancelot calves with her square straight back line. She will be a fertile heifer as her dam produced in one flush a record of 41 embryos. Her Dam is also currently being flushed for export embryos.



Dam: Waratah E23 (ET)

JUNE 2019 SPECKLE PARK GROUP BREEDPLAN

	Gestation Length	Birth Weight	200 Day Wt	400 Day Wt	600 Day Wt	Mat Cow Wt	Milk	Scrotal Size	Carcase Wt	Eye Muscle Area	Rib Fat	Rump Fat	Retail Beef Yield	IMF
EBV	+0.2	+2.3	+18	+22	+31	+29	+2	+0.2	+18	+1.0	-0.2	-0.3	+0.5	-0.1
Acc	46%	70%	58%	53%	55%	43%	29%	39%	39%	27%	33%	33%	32%	28%

Purchaser: \$.....



LOT 59 WARATAH AMY P67

LST P67

Born: 3/08/2018 Colour: Black Myostatin: F Poll: PcPc Coat: ED/ED Pedigree Assured: YES

REDNECK WILD WILLY 2W (AI) (P) (Speckled)

SIRE: YOGI GOES REDNECK (Speckled)

ASPEN ACRES LINDA LOU 10L (Speckled)

ASPEN ACRES T.N.T. 4Y (Speckled)

DAM: WARATAH AMY M135 (AI) (ET) (Black)

WARATAH E27 AMY J83 (AI) (ET) (Speckled)

Yogi x TNT x Pretender

There are only two black heifers this year, she is a heifers first calf and being a by Yogi she has top Breedplan numbers for Gestation Length and for Birth Weight.



Sire: Yogi Goes Redneck

JUNE 2019 SPECKLE PARK GROUP BREEDPLAN

	Gestation Length	Birth Weight	200 Day Wt	400 Day Wt	600 Day Wt	Mat Cow Wt	Milk	Scrotal Size	Carcase Wt	Eye Muscle Area	Rib Fat	Rump Fat	Retail Beef Yield	IMF
EBV	-1.7	-0.1	+9	+16	+20	+19		+0.3	+13		+0.3	+0.4		
Acc	40%	70%	54%	48%	50%	38%		34%	31%		26%	26%		

Purchaser:..... \$.....

LOT 60 WARATAH PHO-FINSH P54

LST P54

Born: 10/08/2018 Colour: Speckled Myostatin: F Poll: PcPc Coat: ED/ED Pedigree Assured: YES

LEGACY UNRIVALED 12U (P) (Speckled)

SIRE: CODIAK AMIGO GNK 65Y (P) (White)

CODIAK GNK 24T (P) (Leopard)

JOHNER STOCK FARM TRADE SECRET (White)

DAM: WARATAH PHO FINISH M120 (AI) (ET) (P) (Speckled)

WARATAH E23 (ET) (Black)

Amigo x Trade Secret x John Wayne

Waratah Pho-Finish P54 is also a heifers first calf and is extremely quite natured. Having Amigo as her father she will be a good mother with lots of milking ability.



Sire: Codiak Amigo GNK 65Y (P)

JUNE 2019 SPECKLE PARK GROUP BREEDPLAN

	Gestation Length	Birth Weight	200 Day Wt	400 Day Wt	600 Day Wt	Mat Cow Wt	Milk	Scrotal Size	Carcase Wt	Eye Muscle Area	Rib Fat	Rump Fat	Retail Beef Yield	IMF
EBV	-0.7	+0.9	+12	+17	+24	+23		+0.5	+13					
Acc	39%	71%	55%	47%	50%	36%		29%	29%					

Purchaser:..... \$.....

LOT 61 WARATAH AMY P192

LST P192

Born: 26/09/2018 Colour: White Myostatin: F Poll: PcPc Coat: ED/ED Pedigree Assured: YES

CODIAK OSCAR GNK 8S (P) (Leopard)

SIRE: CODIAK SPENCER GNK 52B (P) (Leopard)

CODIAK WILLA GNK 13W (P) (Speckled)

WARATAH FLASH (ET) (White)

DAM: WARATAH E25 AMY K144 (ET) (P) (Speckled)

WARATAH E25 (ET) (P) (Black)

Spencer x Flash x Baker

Waratah Amy P192 is sister to lots 49, 52 and 62. Second last chance to buy a Spencer daughter.



Sire: Waratah E25 Amy K144 (ET) (P)

JUNE 2019 SPECKLE PARK GROUP BREEDPLAN

	Gestation Length	Birth Weight	200 Day Wt	400 Day Wt	600 Day Wt	Mat Cow Wt	Milk	Scrotal Size	Carcase Wt	Eye Muscle Area	Rib Fat	Rump Fat	Retail Beef Yield	IMF
EBV	+0.3	+1.1	+10	+13	+13	+12		+0.0	+9					
Acc	40%	72%	59%	51%	52%	39%		29%	35%					

Purchaser:..... \$.....



LOT 62 WARATAH AMY P186

LST P186

Born: 26/09/2018 Colour: Speckled Myostatin: C Poll: PcPc Coat: ED/ED Pedigree Assured: YES

CODIAK OSCAR GNK 8S (P) (Leopard)

SIRE: CODIAK SPENCER GNK 52B (P) (Leopard)

CODIAK WILLA GNK 13W (P) (Speckled)

WARATAH FLASH (ET) (White)

DAM: WARATAH E25 AMY K144 (ET) (P) (Speckled)

WARATAH E25 (ET) (P) (Black)

Spencer x Flash x Baker

Waratah Amy P186 is sister to lots 49, 52 and 61. She is the quietest of all the Spencer daughters. She has some old pink eye scarring on one eye from when she was a calf, we don't think it will be detrimental and will reduce in size with time.



Sire: Codiak Spencer GNK 52B (P)

JUNE 2019 SPECKLE PARK GROUP BREEDPLAN

	Gestation Length	Birth Weight	200 Day Wt	400 Day Wt	600 Day Wt	Mat Cow Wt	Milk	Scrotal Size	Carcase Wt	Eye Muscle Area	Rib Fat	Rump Fat	Retail Beef Yield	IMF
EBV	+0.4	+1.3	+11	+14	+15	+13		+0.1	+10					
Acc	40%	72%	59%	51%	52%	39%		29%	35%					

Purchaser:..... \$.....

LOT 63 WARATAH SPANISH ANGEL P136

LST P136

Born: 24/11/2018 Colour: Speckled Myostatin: F Poll: PcPc Coat: ED/ED Pedigree Assured: YES

YOGI GOES REDNECK (Speckled)

SIRE: JOHNER STOCK FARM TRADE SECRET (White)

MONNERY RIVER 7W (P) (Speckled)

STAR BANK KING GEORGE 82U (P) (Speckled)

DAM: WARATAH SPANISH ANGEL (ET) (P) (Black)

RIVER HILL SPANISH ANGEL 5S (P) (Black)

Trade Secret x King George x Moofasa

Waratah Spanish Angel P136 is the equal youngest heifer in the sale with her sister P143. P136 is also the sister to the lead bull in the sale, have a look at him to give you an idea of her potential growth.

Out of a large framed cow, her dam Spanish Angel F15 is the equal highest female in the country for Fertility with at +1.3 for scrotal size, a trait she is now sharing with her offspring as P136 is in the top 5% for scrotal size and 10% for Gestation Length.



Sire: Johner Stock Farm Trade Secret

JUNE 2019 SPECKLE PARK GROUP BREEDPLAN

	Gestation Length	Birth Weight	200 Day Wt	400 Day Wt	600 Day Wt	Mat Cow Wt	Milk	Scrotal Size	Carcase Wt	Eye Muscle Area	Rib Fat	Rump Fat	Retail Beef Yield	IMF
EBV	-1.4	+0.8	+12	+18	+26	+30		+0.9	+13	+0.2	+0.4	+0.6	-0.3	+0.0
Acc	41%	64%	54%	50%	51%	40%		42%	38%	29%	36%	36%	34%	29%

Purchaser:..... \$.....





LOT 64 WARATAH SPANISH ANGEL P143

LST P143

Born: 24/11/2018 **Colour:** Speckled **Myostatin:** F **Poll:** PcPc **Coat:** ED/ED **Pedigree Assured:** YES

YOGI GOES REDNECK (Speckled)

SIRE: JOHNER STOCK FARM TRADE SECRET (White)

MONNERY RIVER 7W (P) (Speckled)

STAR BANK KING GEORGE 82U (P) (Speckled)

DAM: WARATAH SPANISH ANGEL (ET) (P) (Black)

RIVER HILL SPANISH ANGEL 5S (P) (Black)

Trade Secret x King George x Moofasa

Waratah Spanish Angel P143 is the equal youngest heifer in the sale with the sister Lot 63. P143 is also the sister to the lead bull in the sale, have a look at him to give you an idea of her potential growth.

Her Dam has been in the donor paddock at Waratah for quite a few years but is now an international star with embryos sold to New Zealand and the European Union. Out of a large framed cow her dam Spanish Angel F15 is the equal highest female in the country for Fertility with at +1.3 for scrotal size, a trait she is now sharing with her offspring as P143 is in the 10% for Gestation Length, top 5% for Scrotal Size.

P143 is an opportunity not to be missed, she is the last of the heifer offering in our 2019 sale.



JUNE 2019 SPECKLE PARK GROUP BREEDPLAN

	Gestation Length	Birth Weight	200 Day Wt	400 Day Wt	600 Day Wt	Mat Cow Wt	Milk	Scrotal Size	Carcase Wt	Eye Muscle Area	Rib Fat	Rump Fat	Retail Beef Yield	IMF
EBV	-1.4	+0.8	+12	+18	+26	+30		+0.9	+13	+0.2	+0.4	+0.6	-0.3	+0.0
<i>Acc</i>	41%	64%	54%	50%	51%	40%		42%	38%	29%	36%	36%	34%	29%

Purchaser:..... \$.....





PETEMAR SPECIAL SILAS 3D

PEW 3D

Born: 8/01/2016 Colour: Speckled Myostatin: F Poll: PcPc Coat: ED/e Pedigree Assured: YES

BELMORAL'S SPECIAL 99H (Speckled)
SIRE: REMIN'S SPECIAL 1L (Speckled)
 AMULET MISS 3A (Leopard)
 SAGE LAD 2L (Speckled)
DAM: MISS SAGE 2N (Speckled)
 CODIAK FALCON 20F (Speckled)



Remin's Special x Sage Lad x Champ

First time offered for sale in Australia, Silas is an eye catching impressive white bull. He is an outcross to most Speckle Park cattle in Australia giving you more breeding options. We brought Silas from Watson's in Ontario, Canada in 2018. His brother Petemar Special Edition was also impressive but Silas was a little longer in the body and had extra height. A very quiet bull with a sound structure, stood upright on all his feet and moved with ease.

JUNE 2019 SPECKLE PARK GROUP BREEDPLAN

	Gestation Length	Birth Weight	200 Day Wt	400 Day Wt	600 Day Wt	Mat Cow Wt	Milk	Scrotal Size	Carcase Wt	Eye Muscle Area	Rib Fat	Rump Fat	Retail Beef Yield	IMF
EBV		+1.7	+11	+14	+21									
<i>Acc</i>		42%	33%	29%	30%									

LOT 65 10 STRAWS - PETEMAR SPECIAL SILAS 3D

Purchaser:..... \$.....

LOT 66 10 STRAWS - PETEMAR SPECIAL SILAS 3D

Purchaser:..... \$.....

WOLF LAKE BOB 24E (P)

DHB 24E

Born: 04/02/2017 Colour: Speckled Myostatin: F Poll: PcPc Coat: ED/ED Pedigree Assured: YES

RAVENWORTH KLEOS 3Y (P) (Speckled)
SIRE: RAVENWORTH INVICTUS 103C (P) (Speckled)
 RAVENWORTH NORTHERN STAR 101A (P) (Speckled)
 RIVER HILL 12X ZAAR 7Z (P) (Speckled)
DAM: RAVENWORTH ASPEN 118C (P) (Speckled)
 SPOTS 'N SPROUTS 31A (P) (Speckled)



Invictus x Zaar x Wampum

A new introduction in Waratah's 2018 breeding season. We used Bob in both our AI and ET programs last year. Bob had the perfect trifecta being polled, black and a non-carrier of myostatin. His sire Ravensworth Invictus, out of the Ravensworth herd in Saskatchewan, Canada, has a proven show record. This is your opportunity to secure NEW Canadian genetics that tick all the boxes.

JUNE 2019 SPECKLE PARK GROUP BREEDPLAN

	Gestation Length	Birth Weight	200 Day Wt	400 Day Wt	600 Day Wt	Mat Cow Wt	Milk	Scrotal Size	Carcase Wt	Eye Muscle Area	Rib Fat	Rump Fat	Retail Beef Yield	IMF
EBV		+1.0												
<i>Acc</i>		25%												

LOT 67 10 STRAWS - WOLF LAKE BOB 24E (P)

Purchaser:..... \$.....

LOT 68 10 STRAWS - WOLF LAKE BOB 24E (P)

Purchaser:..... \$.....



CN ZPOTZ ZAZU 2Z

CNZ 2Z

Born: 20/04/2012 **Colour:** White **Myostatin:** F **Poll:** PcPc **Coat:** ED/e

SIRE: LEGACY ROUGHRIDER 52R (P) (Speckled)
LEGACY TURNPIKE CRUISER 27T (P) (Leopard)
LEGACY ROMA 60R (P) (Speckled)

DAM: PRAIRIE HILL MASTERPLAN II 87L (Speckled)
PRAIRIE HILL NIRVANA 4N (Speckled)
PRAIRIE HILL 1H (Speckled)

Turnpike Cruiser x Masterplan x New Decade

Zazu is a very structurally correct bull who first attracted our attention in the Canadian Source Speckle Park Sale in 2013. Laiton, while in Canada in 2016, was able to view Zazu as a mature bull and he did not disappoint. Zazu is a free moving thick soft bull. We are impressed with the extra length he has put into his offspring. Zazu recently sired two very good sons, who sold in Canada to Codiak Acres and Johner Stock Farms. You can see the quality and type of offspring Zazu can produce in lots 4 & 5. Limited straws available in Australia.



JUNE 2019 SPECKLE PARK GROUP BREEDPLAN

	Gestation Length	Birth Weight	200 Day Wt	400 Day Wt	600 Day Wt	Mat Cow Wt	Milk	Scrotal Size	Carcase Wt	Eye Muscle Area	Rib Fat	Rump Fat	Retail Beef Yield	IMF
EBV	+1.0	+1.7	+14	+22	+31	+38		+1.0	+18	-0.1	+0.1	+0.1	-0.3	
<i>Acc</i>	51%	77%	59%	52%	58%	42%		48%	36%	27%	33%	33%	30%	

LOT 69 5 STRAWS - CN ZPOTZ ZAZU 2Z

Purchaser:..... \$.....

YOGI GOES REDNECK

SDS 7Y

Born: 19/02/2011 **Colour:** Speckled **Myostatin:** **Poll:** **Coat:**

SIRE: P.A.R. MOO FASSA 03M (Speckled)
REDNECK WILD WILLY 2W (AI) (P) (Speckled)
PRAIRIE HILL NAUGHTY GIRL 90N (Speckled)

DAM: ASPEN ACRES HORATIO 6H (Speckled)
ASPEN ACRES LINDA LOU 10L (Speckled)
JOY OF P.A.R. 10J (Speckled)

Wild Willy x Horatio x Gunpowder

Yogi Goes Redneck is an opportunity not to be missed! Laiton had the opportunity to see Yogi Goes Redneck when he was in Canada and was impressed by his calves. We have already used Yogi as well as one of his son's, Trade Secret in our embryo program. Yogi Goes Redneck is the highest indexing bull for Gestation Length, with a Breedplan figure of -3.7. He has been the best heifer bull Waratah has used in the past 11 years.



JUNE 2019 SPECKLE PARK GROUP BREEDPLAN

	Gestation Length	Birth Weight	200 Day Wt	400 Day Wt	600 Day Wt	Mat Cow Wt	Milk	Scrotal Size	Carcase Wt	Eye Muscle Area	Rib Fat	Rump Fat	Retail Beef Yield	IMF
EBV	-3.7	-1.6	+6	+14	+17	+16		+0.3	+12	+0.6	+0.4	+0.6	-0.4	+0.2
<i>Acc</i>	56%	81%	66%	60%	65%	49%		56%	45%	34%	42%	42%	39%	31%

LOT 70 10 STRAWS - YOGI GOES REDNECK

Purchaser:..... \$.....



4 A-GRADE EMBRYOS: WARATAH J30 (P) X WARATAH SPANISH ANGEL J167



CHAMPAGNE PRETENDER (ET) (P) (Speckled)
SIRE: WARATAH J30 (P) (White)
WARATAH EMBER E26 (ET)



WATTLE GROVE MOONSHINE E10 (ET) (White)
DAM: WARATAH F15 SPANISH ANGEL J167 (P) (White)
WARATAH SPANISH ANGEL (ET) (P) (Black)

Waratah Spanish Angel J167 is one of the outstanding moonshine daughters we have at waratah. She has been part of our flush program for many years now, and has calves born both in Austalian and New Zealand. She stands out in our herd of cows and is always the first cow people notice when they come to visit the farm. Joined to Waratah J30 who offers great volume and thickness. These resulting calves are sure to reflect their parents' ideal qualities. Qualified for Australia only.

LOT 71 4 A-GRADE EMBRYOS: WARATAH J30 (P) X WARATAH SPANISH ANGEL J167

Purchaser:..... \$.....

4 A-GRADE EMBRYOS: PETEMAR SPECIAL SILAS 3D X WARATAH TEEKA J141 (P)



REMIN'S SPECIAL 1L (Speckled)
SIRE: PETEMAR SPECIAL SILAS 3D (WHITE)
MISS SAGE 2N (Speckled)

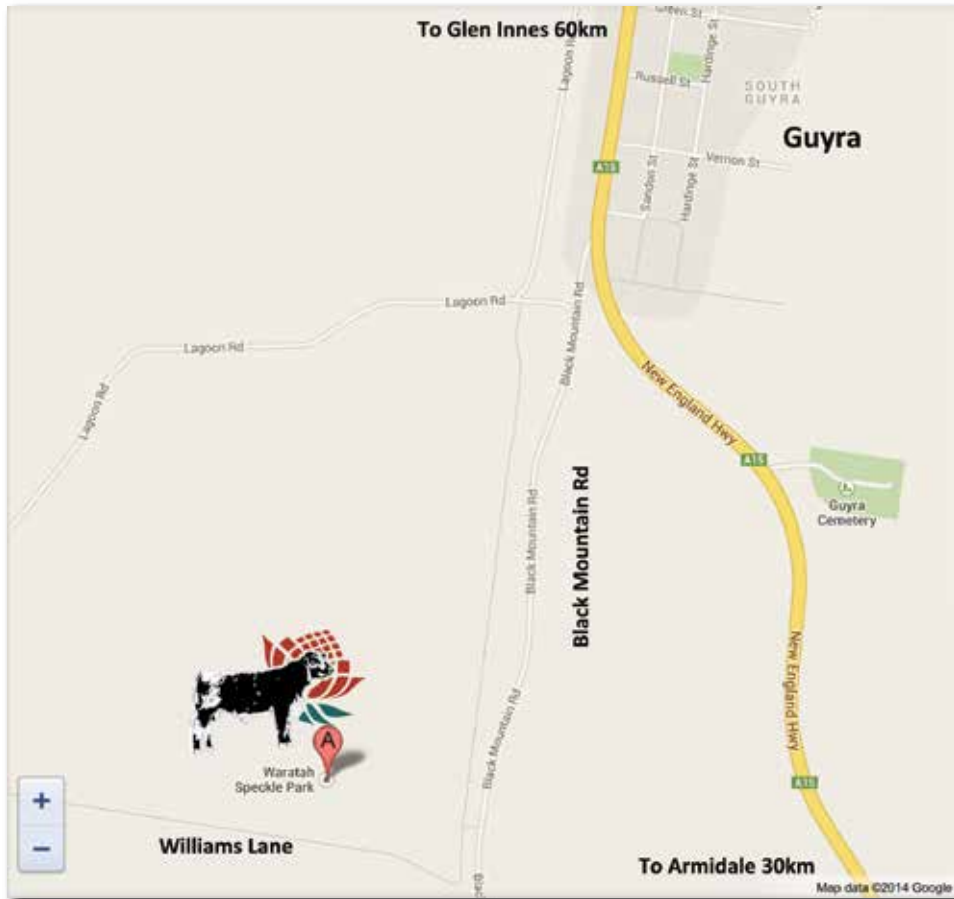


WATTLE GROVE ALMIGHTY E41 (ET) (Speckled)
DAM: WARATAH TEEKA J141 (AI) (ET) (P) (SPECKLED)
WATTLE GROVE 50S TEEKA G23 (ET) (Speckled)

First time offering of Silas Embryos!!! Silas is an impressive white bull with outcross genetics. Joined to Waratah Teeka J141, this is an embryo package not to be missed! J141 is a large framed speckled cow with good milk, that now has calves in both Australia and New Zealand. Recently at the Below Sea Level Speckle Park sale in New Zealand, an embryo heifer out of Waratah Teeka J141 by JSF Continental sold for \$11500. This unique embryo packages gives you the opportunity to get ahead, with new genetic lines. Embryos qualify for Australia only.

LOT 72 4 A-GRADE EMBRYOS: PETEMAR SPECIAL SILAS 3D X WARATAH TEEKA J141 (P)

Purchaser:..... \$.....



62 Williams Lane, Guyra NSW 2365

Thank you

Thank you for joining us here today at Waratah or at home via live broadcast for our 6th Annual sale. We wish you the very best with your purchases and look forward to your company in years to come. Safe journey home and until next time.

Regards,

Eric, Helen, Laiton & Kayla Turnham

Animal Averages

Animal	Top Price	Average
2 Year Old Speckle Park Bulls		
Yearling Bulls		
Speckle Park Females		



Speckle Park International Inc

ABRI, University of New England, Armidale NSW 2351
Phone 02 6773 3056 Fax 02 6772 5376
Email: specklepark@abri.une.edu.au



Transfer Application

Purchaser Name: _____ Address: _____

Signature: _____ Transfer date: _____

	Animal Ident	Sex M/F	Sale Price (voluntary)	Joining Sire IDENT	Service Type NAT/AI	Joining Date FROM	Joining Date TO
1							
2							
3							
4							
5							
6							
7							

I authorise the transfer of the above animals for recording in the database of Speckle Park International Inc.

Signed: _____ Date: _____ Member Prefix: _____



WARATAH SPECKLE PARK

BULLS & HEIFER SALE 2019

Dear Buyer,

Congratulations on your purchase. Please complete the form below and submit to the settling office immediately after the sale.

With thanks
Waratah Speckle Park

PURCHASER DETAILS

PURCHASER NAME:

TRADING NAME:

ADDRESS:

.....

.....

PHONE NUMBER: MOBILE NUMBER:

EMAIL ADDRESS:

PROPERTY IDENTIFICATION CODE (PIC):

BILL TO:

.....

LOTS PURCHASED:

INSURANCE YES / NO

PEDIGREE TRANSFER REQUIRED YES / NO

DELIVERY ARRANGEMENTS:

.....

.....

.....

BUYERS SIGNATURE:

WARATAH SPECKLE PARK

Spot on Genetics



LOT 3: WARATAH NIGHT STALKER N61



LEGACY BONE CRUSHER 35B/PETEMAR TEQUILLA 1N

LOT 4: WARATAH NEVADA N78



TOP 1% FOR SCROTAL SIZE

LOT 5: WARATAH NAVAJO N38



EXHIBITS 6 TRAITS IN THE TOP 10% OF BREED

LOT 7: WARATAH NEVER LATE N64



IMF% 7.8 | P8 FAT 12MM | RIB FAT 8MM

LOT 10: WARATAH NO FEAR N55



IMF% 7.3 | P8 FAT 11MM | RIB FAT 10MM

LOT 15: WARATAH NAVIGATOR N40



NEW MATERNAL FEMALE LINE - DLR ZIPPERY 42Z



Unable to make sale day?
BID ONLINE WITH ELITE LIVESTOCK AUCTIONS

www.waratahspecklepark.com



**20
19**

“We believe the quality of the bulls in this year’s sale is extremely high and there are multiple potential stud sires in this year’s offering.”